

CISA Prestige INOX



MAIN FEATURES

ACCURATE DESIGN AND AESTHETICS

- A modern and simple design, result of accurate research work, makes "CISA PRESTIGE INOX" suitable for any environment.

RELIABILITY

- "CISA PRESTIGE INOX" is a top product in terms of reliability, quality of materials and accurate operation mechanisms.
- "CISA PRESTIGE INOX" guarantees high performance levels and a much longer life than provided for in the highest level of the standards (200,000 max cycles).

EASY TO INSTALL

- Special design features make "CISA PRESTIGE INOX" easy and quick to install on wooden, steel or aluminium doors.
- "CISA PRESTIGE INOX" is suitable for replacing the existing CISA "No Problem" and 59300 series.

CORROSION RESISTANCE

- The STAINLESS steel used for manufacturing CISA PRESTIGE series, guarantees high resistance to corrosion.

MODULARITY

- "CISA PRESTIGE INOX" can be used together with upper/lower or lateral additional locking devices, for single or double leaf doors, rebated doors and swinging doors, and with outside operation units.

CERTIFICATION AND CE MARKING

- The materials and technical solutions adopted allow the highest standards to be respected, leading CISA to obtain markings and certifications such as:
 - CE marking according to EEC DIRECTIVE 89/106 released by AENOR for use on standard and fire rated doors.
 - Voluntary product certification released by third party ICIM as provided for by UNI EN 1125 standards.

Technical Features

- Stainless steel casing AISI 304.
- Adjustable stainless steel bar AISI 304.(to be ordered separately).
- Aluminium alloy latchbolts and dead bolts with PVD coating.
- Dead-locking lateral and top/bottom latch bolts.

Operation

- Inside: by pushing the bar.
- Outside: by key and/or handle.

Finishes

- Stainless steel cover and bar

Hand

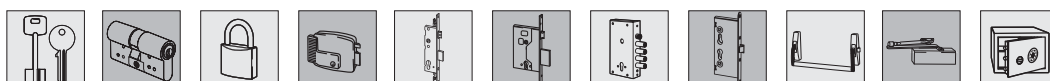
0 = Non-handed

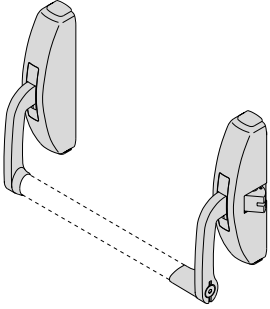
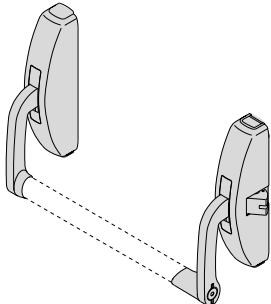
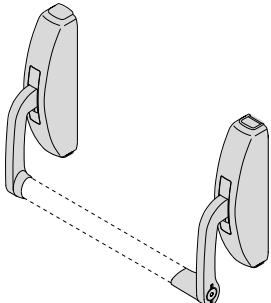
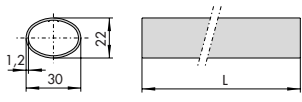
Supplied as standard



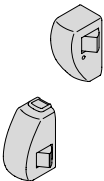
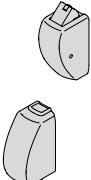
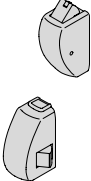
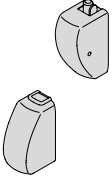

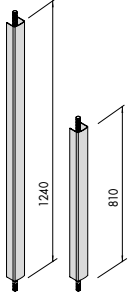
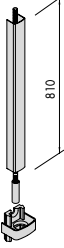
- Strikers
- Stainless steel fixing screws
- Installation and maintenance instruction sheet
- ICIM and CE Certification

On request

- Outside operation units (spec. LA)
- Additional locking points (spec. FG)
- Version with microswitch (spec. FR)
- Fire version with steel latchbolts

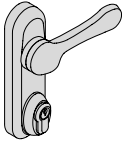
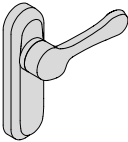
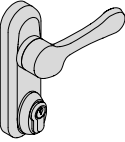



Type	Description	Unit weight Kg	Pieces	ITEM				
				Type	Dim.	Hand	Fin.	Pers. Spec.
	<ul style="list-style-type: none"> • Dead-locking lateral latchbolt • SUPPLIED AS STANDARD: <ul style="list-style-type: none"> - Strikers item 1.07072.70.0 , 1.07072.71.0 • ON REQUEST: <ul style="list-style-type: none"> - Outside operation device item 1.07077.46/47/48/49.0 .C2 	2,500	1	1	59351	10	0	
	<ul style="list-style-type: none"> • MODULAR VERSION • Dead-locking latchbolt which can be deactivated • SUPPLIED AS STANDARD: <ul style="list-style-type: none"> - Strikers item 1.07072.70.0 , 1.07072.71.0 • Can be used with: <ul style="list-style-type: none"> - Pair of lateral latchbolts item 1.07063.21.0 - Pair of top/bottom latchbolts item 1.07063.31.0 - Pair of top/lateral latchbolts item 1.07063.36.1/2 - Pair of top/bottom deadbolts item 1.07063.41.0 • ON REQUEST: <ul style="list-style-type: none"> - Outside operation device item 1.07077.46/47/48.0.C2 	2,500	1	1	59361	10	0	
	<ul style="list-style-type: none"> • MODULAR VERSION • Can be used with: <ul style="list-style-type: none"> - Pair of lateral latchbolts item 1.07063.21.0 - Pair of top/bottom latchbolts item 1.07063.31.0 - Pair of top/lateral latchbolts item 1.07063.36.1/2 - Pair of top/bottom deadbolts item 1.07063.41.0 • ON REQUEST: <ul style="list-style-type: none"> - Outside operation device item 1.07077.46/47/48.0.C2 	2,500	1	1	59366	10	0	
	<ul style="list-style-type: none"> • Stainless steel oval shaped bar 	L = 900	0,800	1	1	07007	60	0
		L = 1200	1,100	1	1	07007	61	0
		L = 1500	1,450	1	1	07007	62	0

Type	Description	For item	 Unit weight  Pieces	ITEM				
				Type	Dim.	Hand	Fin.	Pers.
	<ul style="list-style-type: none"> • Pair of latchbolts for lateral locking points • SUPPLIED AS STANDARD: - Strikers items 1.07072.70.0, 1.07072.71.0 	59361, 59366	1,000	1	1	07063	21	0
	<ul style="list-style-type: none"> • Pair of dead-locking latchbolts for top/bottom locking points • SUPPLIED AS STANDARD: - Upper strikers items 1.07072.70.0, 1.07072.71.0 - Floor striker item 1.07072.78.0 	59361, 59366	1,000	1	1	07063	31	0
	<ul style="list-style-type: none"> • Pair of latchbolts for top dead-locking and bottom lateral locking points • SUPPLIED AS STANDARD: - Strikers items 1.07072.70.0, 1.07072.71.0 	59361, 59366	1,000	1	1	07063	36	1
			1,000	1	1	07063	36	2
	<ul style="list-style-type: none"> • Pair of latchbolts for top/bottom locking points for swinging doors • SUPPLIED AS STANDARD: - Upper strikers items 1.07072.75.0, 1.07072.76.0 - Floor striker item 1.07072.75.0 	59361, 59366	1,000	1	1	07063	41	0
	<ul style="list-style-type: none"> • Additional lateral latchbolt • SUPPLIED AS STANDARD: - Strikers items 1.07072.70.0, 1.07072.71.0 	59361, 59366	0,300	1	1	07063	16	1
			0,300	1	1	07063	16	2
	<ul style="list-style-type: none"> • Pair of stainless steel extended bolts • Stainless steel casing • To be used with pair of latchbolts items 1.07063.21/31/36/41.0 	59361, 59366	1,130	1	1	07081	61	0
	<ul style="list-style-type: none"> • Top stainless steel extended bolt set • Stainless steel casing 	07063	0,500	1	1	07064	61	0

OUTSIDE OPERATION UNITS FOR CISA PRESTIGE INOX PANIC DEVICES

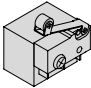
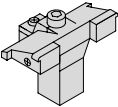


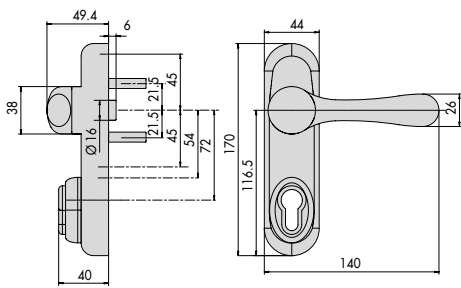
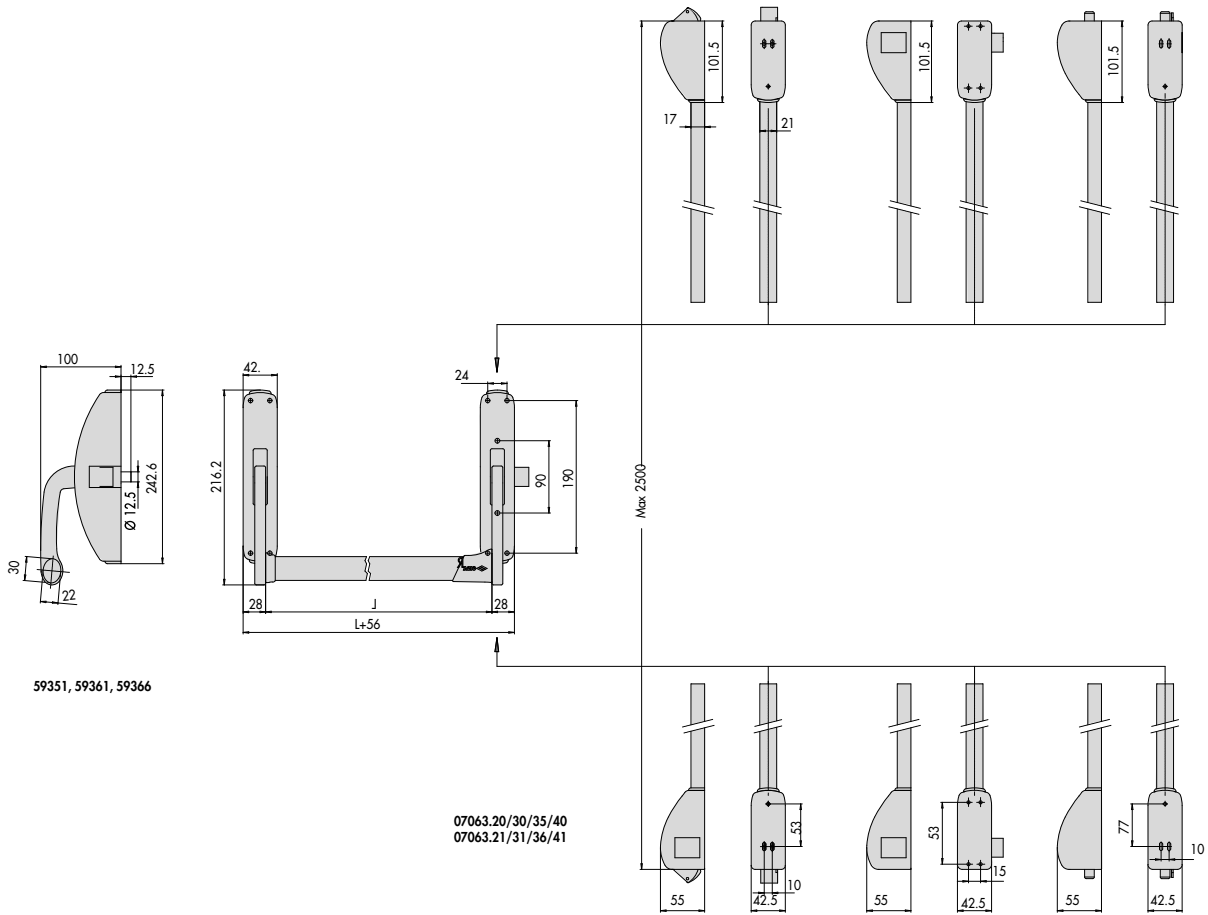
Type	Description	For item	Kg		ITEM				
			Unit weight	Pieces	Type	Dim.	Hand	Fin.	Pers.
	<ul style="list-style-type: none"> • Plate with handle, reduced projection • Glazed stainless steel PVD coating (fin. C2) • Cylinder item 1.0G304.02.0.12 • Handle deactivated by key 	59351, 59361, 59366	0,300	1	1	07077	46	0	C2
	<ul style="list-style-type: none"> • Plate with handle • Glazed stainless steel PVD coating (fin. C2) 	59351, 59361, 59366	0,300	1	1	07077	47	0	C2
	<ul style="list-style-type: none"> • Plate with handle • Glazed stainless steel PVD coating (fin. C2) • Cylinder item 1.0G304.02.0.12 • Handle deactivated by key 	59351, 59361, 59366	0,300	1	1	07077	48	0	C2
	<ul style="list-style-type: none"> • Plate • Glazed stainless steel PVD coating (fin. C2) • Cylinder item 1.0G304.02.0.12 	59351	0,300	1	1	07077	49	0	C2

On request:

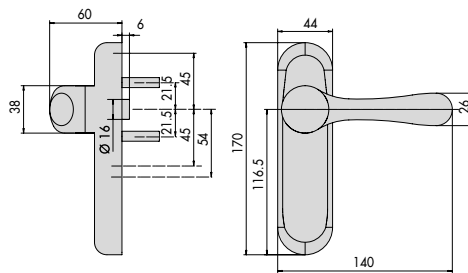
- Outside operation units with microswitch (car. LA)

ACCESSORIES FOR CISA PRESTIGE INOX PANIC DEVICES

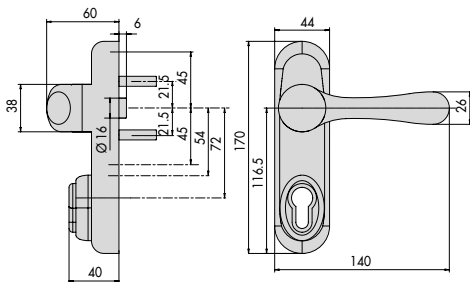
	<ul style="list-style-type: none"> • Microswitch to be used with CISA PRESTIGE INOX panic devices 		0,050	1	1	06195	07	0
	<ul style="list-style-type: none"> • Hold open device for CISA PRESTIGE INOX of panic devices 		0,100	1	1	07065	52	0



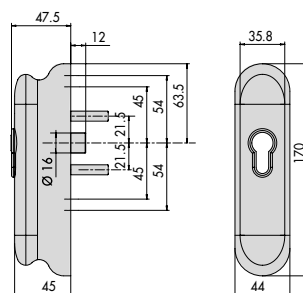
1.07077.46



1.07077.47



1.07077.48



1.07077.49

