

SINGLE SKIN CASSETTE

www.luxalon.com **LUXALON**[®]
Façade Systems

A HunterDouglas[®] PRODUCT

Luxalon® Single Skin Cassette

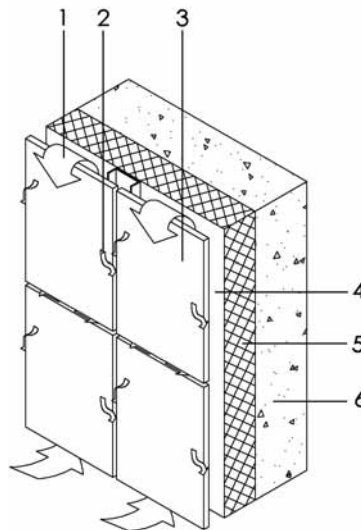
Introduction

Hunter Douglas Construction Elements, part of the international Hunter Douglas Group, has specialised in producing aesthetic, made-to-measure façade systems to meet the highest architectural and technical standards.

Full dedication to quality, more than 35 years of world wide experience and modern manufacturing equipment enable Hunter Douglas Construction Elements to transform architectural concepts into economical and easy installable façade solutions.

Principal elements of a ventilated façade

1. Ventilation
2. Drainage
3. Luxalon® SSC panel
4. Cavity
5. Thermal insulation
6. Load bearing wall





Ventilated Façade technology

Luxalon® SSC Single Skin Cassette is an open joint cladding system that is based on ventilated façade technology.

In ventilated façade technology important functions of a wall construction such as aesthetics, thermal insulation, weather proofing and structural performance are separated. This allows to optimise each of these functions to perfectly suit the building requirements.

Open panel joints between Luxalon® SSC panels allow for cavity ventilation. The shape of panel and its substructure drains out rain and condensation water behind the cladding surface. The system can be installed to almost any load bearing wall construction.

Luxalon® SSC is ideally suited to any building, low or high rise, where the following points are of prime importance:

- Durability
- Low weight per m²
- Smooth and flat surface
- Crisp joint design
- Quick installation
- Simple connection to windows and doors
- First class finish

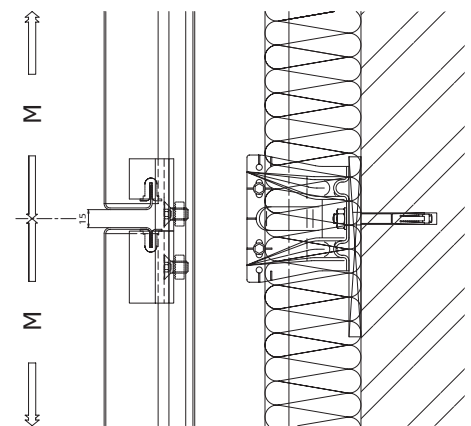
LUXALON®

Complete solutions

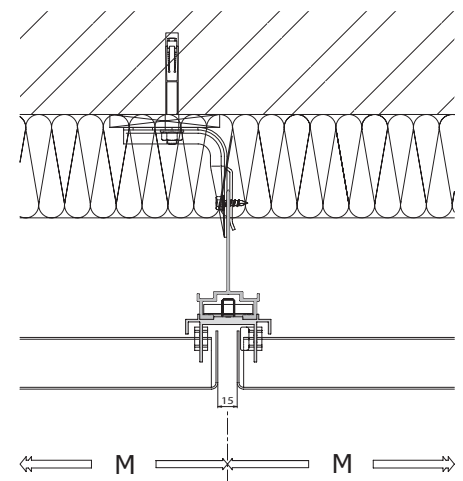
A wide range of joint and interface solutions are available for internal and external corners, parapets, cills and connection details to other building elements.

Unique for Luxalon® SSC is that the system is designed for horizontal panel orientation without requiring additional reinforcement structures in the panel.

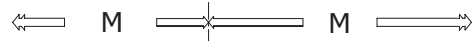
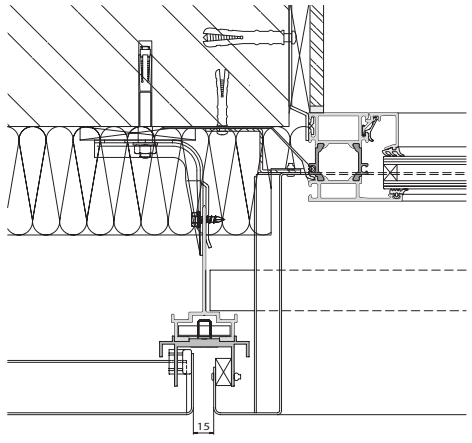
Its low weight and simple connection details make Luxalon® SSC excellently suited for both new-build and renovation projects.



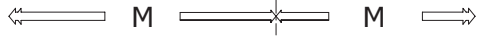
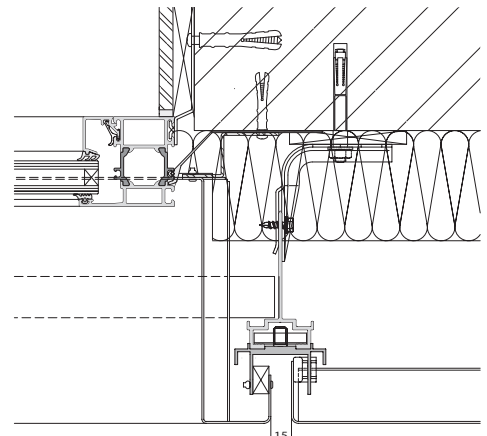
Horizontal Joint



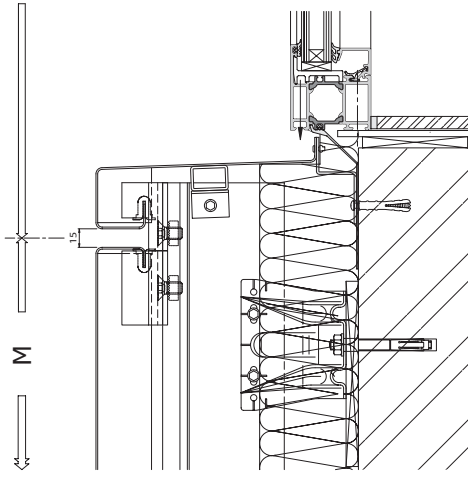
Vertical Joint



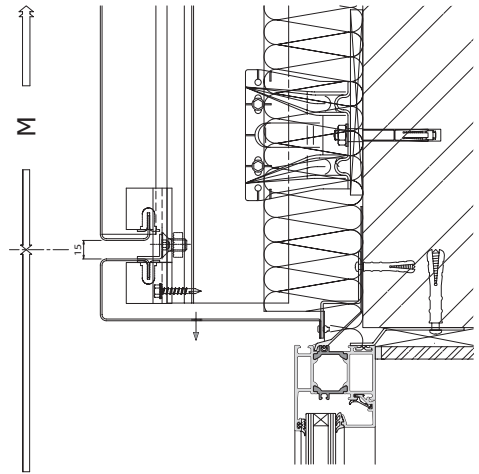
L/H Window Jamb



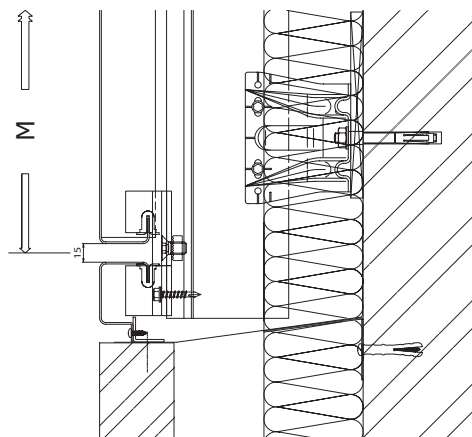
R/H Window Jamb



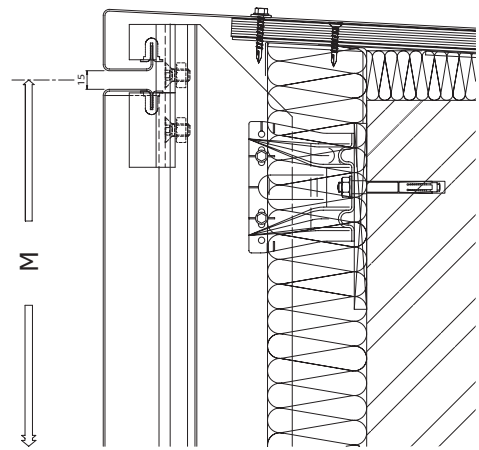
Window Cill



Window Head



Cill



Parapet

Unique installation method

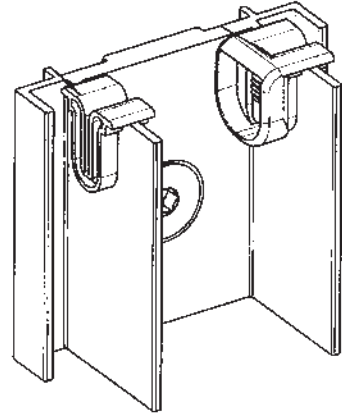
Luxalon® SSC has a unique method of installation that is unlike traditional cassette cladding systems. Installation commences with mounting of proprietary wall brackets, support track and fixing plates. After installation of the thermal insulation the SSC panels are hooked on the top fixing plates. And the bottom fixing plates are lowered to 'lock' the panel in position. This method allows panels to be installed and removed individually.

The top and bottom fixing plates are fixed to the Luxalon® substructure rail by hexagon socket screw and nut plate.

In the fixing plates are inserts and corner inserts.

In combination with specific cut-outs at each panel corner the panel position is secured for thermal movement.

The unique SSC-system is easy to combine with window-systems. Together they form a smooth and crisp surface with simple and easy detailing.



System advantages

- No prescribed installation direction
- Panels can be installed from top to bottom or from bottom to top
- Individual panel installation or replacement
- Simple and obvious installation
- Simple connection details
- Factory controlled production
- Tightly controlled joints, 15 mm nominal width. No adjustment necessary after hooking panels on substructure
- Integrated and concealed retainers to lock panel position
- Substructure rails and brackets are exchangeable with other Luxalon® Façade systems
- Only few simple tools required for installation
- One-way fixing to avoid paint direction differences
- Thermal expansion allowed in panel fixings



Luxalon® SSC is produced from pre-coated aluminium. The system design and its production method allow for great flexibility in panel size and shape, as well as curving and cranking.



Coil coating technology

Hunter Douglas coil coating is based on the principle of coating flat metal strip in a continuous process before the metal is formed to its final shape. Advantages are:

- Coil coated materials comply with the highest European quality standards, EN 1396
- Coil coating takes place under optimum factory controlled conditions
- High grade pre-treatment (adhesion and protection)
- Optimum control of coating thickness
- High level of colour continuity

Automated bending technology

Luxalon® SSC panels are produced on 'state of the art' automated bending machines.

Advantages are:

- High levels of dimensional precision
- Cost efficient production and speed in delivery
- Possibility for special shapes



Infinite possibilities

Hunter Douglas Construction Elements believes that a creative design process should not be constrained by standard element sizes or shapes determined by manufacturing processes. Our production processes are designed to be very flexible and for this reason this brochure barely illustrates the infinite possibilities of Luxalon® SSC Single Skin Cassette system.



Specification

Material	: Coil coated aluminium alloy AA3005 H44 in 1.4 mm or 2.0 mm thickness (other metals and alloys optional).
Dimensions	: Maximum 600 mm modular width by 2500 mm modular length in 1.4 mm aluminium. Maximum 800 mm modular width by 2500 mm modular length in 2.0 mm aluminium. Longer panels on project basis.
Panel orientation	: System is designed for horizontal panel orientation.
Joint width	: 15 mm nominal joint width.

Austria
Belgium
Bulgaria
CIS
Croatia / Slovenia
Czechia
Denmark
France
Germany
Greece
Hungary
Ireland
Italy
the Netherlands
Norway
Poland
Portugal
Rumania
Slovakia
Spain
Sweden
Switzerland
Turkey
United Kingdom
Africa
Middle East

Further sales offices:

Asia
Australia
Latin America
North America

LUXALON®

HUNTER DOUGLAS

CONSTRUCTION ELEMENTS

Industriepark 17 - 9351 PA Leek (Gr.)

P.O. Box 128 - 9350 AC Leek (Gr.)

Tel. +31(0) 594.515.333

Fax +31(0) 594.517.851

luxalon@hdce.nl - www.luxalon.com

HunterDouglas®

Hunter Douglas is the world market leader in window covering and a major manufacturer of Architectural Products. The group, which origin goes back to 1919, is comprised over 150 companies with manufacturing and assembly organizations in more than 100 countries.

© Registered trademark - a HunterDouglas® product Pats. & Pats. Pend. - Technical data subject to change without notice.
© Copyright Hunter Douglas 2004. No rights can be derived from copy, text pertaining to illustrations or samples. Subject to changes in materials, parts, compositions, designs, versions, colours etc., even without notice. MX600F00