

INGENIERÍA CLIMATIZACIÓN ZARAGOZA  
C/ Jaime Ferrán 9, Nave 8 50014, Zaragoza  
Phone: +34 976 47 35 35 Fax: +34 976 47 35 52  
incliza@incliza.com  
www.incliza.com

**INCLIZA**, offers services in the field of design, management, implementation, functional rehabilitation and maintenance of buildings and energy facilities, in direct applications for both industry and construction.

- Thermal processes
- Renewable energy (biomass, geothermal, solar thermal and photovoltaic panels)
- Automation and Centralized Management
- Energy services
- Project Management
- Execution of works
- Commissioning
- Operation of facilities

Today's world of building requires professionals with a great capacity to respond to rapid evolution and diversification. We have a highly qualified multidisciplinary team, and our experience as installers, makes our designs have a high level of reliability.

It is within this framework of activity, where different areas of knowledge and different professional backgrounds play a role, that **INCLIZA** becomes a full figure, as a company that is prepared and versatile to meet the changing needs of our society in each of its moments and situations.



# INSTALLATIONS

INCLIZA has extensive experience in the implementation of the following types of installations:

- Comfort air conditioning installations
  - Industrial air conditioning installations
  - Heating installations
  - Ventilation and air filtration treatments
  - Control of technical rooms - data processing
  - Hydrometric monitoring, industrial drying and wetting processes
  - Treatment of swimming pools and "spas"
  - Renewable energy facilities
  - Biomass
  - Solar thermal panels
  - Solar photovoltaic panels
  - Geothermal facility - Heat pumps
- As well as other types of installations:
- Electrical installations
  - Gas installations
  - Fire protection installations
  - Plumbing and sanitation installations
  - Domestic installations
  - Telecommunication installations



# MAINTENANCE

We offer maintenance services tailored to the individual needs of each of our clients.

- Planned maintenance (predictive, preventive and corrective)
- Unplanned emergency services maintenance
- Treatment for prevention of legionella
- Incident Management
- Centralized and remote management
- Implementation of maintenance plan in businesses
- Implementation of maintenance plan in buildings
- Monitoring
- MAO
- Maintenance with staff assigned to buildings
- Gestión de repuestos
- Servicio post-venta (SAT)
- Total warranty maintenance
- Spare parts management
- After-sales service (SAT)
- Extended warranty
- Equipment repair
- 24/365 service
- Vehicles specially equipped for failure care
- Thermal exploitation contracts
- Renovation and refurbishment of facilities
- Fuel replacement
- Renewable energy installation
- Air Quality
- Operation and maintenance manual
- Thermography
- Subsidy Management
- Inspections by Authorized Control Organizations.
- Preparation of documentation for government agencies
- Management of regular inspections
- Waste management
- Legal Advisory and Environmental Service



# AUTOMATION

The aim of systems in smart buildings (Building Automation Systems) is to provide automatic control of comfort conditions inside. From INCLIZA we can design, develop and implement adapted and individualized control architectures.

**INCLIZA** develops integration projects:

- Thermal Systems (air conditioning, heating, thermal-enthalpy free cooling)
- Renewable Energy Systems (solar panels, geothermal, biomass)
- Fire Fighting Systems
- Security and Access Systems
- Lighting
- Service control and monitoring (energy, water, gas, etc.)

**INCLIZA** offers solutions on:

- Performance-based programming of control of heating, ventilation, cooling and lighting
- Environmental controls based on occupation
- Monitoring energy consumption through reports
- Trend analysis and real-time information
- Leverage information from power meters, variable speed drives and lighting controls
- Remote access to system from anywhere, anytime
- System Maintenance
- Continued service and support



# RENEWABLE ENERGY

We offer a full service, with turnkey projects, assuming the design, installation, commissioning, further maintenance and user warranty, through constructive solutions in order to minimize the visual impact, while achieving the best performance.

## WE OFFER:

- Multi-energy solutions which combine Renewable Energy and fossil fuels.
- Biomass
- Thermal Solar Energy
- Photovoltaic Solar Energy
- Geothermal
- Reduction in fossil fuel costs
- Optimization of energy consumption
- Energy and facilities management
- Reduction of atmospheric emissions



## ENERGY SERVICES

INCLIZA has a thorough knowledge of:

- Facility performance and optimization opportunities
- Identification of excess consumption and energy losses
- Reducing energy consumption steadily
- Identification of productivity improvement from a decline in operating energy costs

· Identification of a reduction in energy intensity (specific consumption) as well as environmental improvements, with reduction of CO2 emissions

We offer:

- Building energy certificate
- Thermographic studies
- Energy audit

Through comprehensive, personal and continuing advice to ensure the success of the services offered.



# MARKET

## Public administration

City Councils  
Local authorities  
Prisons  
Social Integration Centers  
Administrative buildings  
Preschools  
University Buildings  
Airports  
Sports Centers  
Municipal Swimming Pools

## Tertiary

Hotels  
Halls of residence  
Hostels  
Spas  
Museums  
Theaters  
Malls  
Banks  
Commercial premises  
Hospitality  
Office Buildings

## Industry

Warehouses  
Cleanrooms  
Laboratories  
Data processing centers  
Industrial processes  
Transformation processes  
Food  
Logistics and Distribution  
Chemistry  
Automotive

## Health

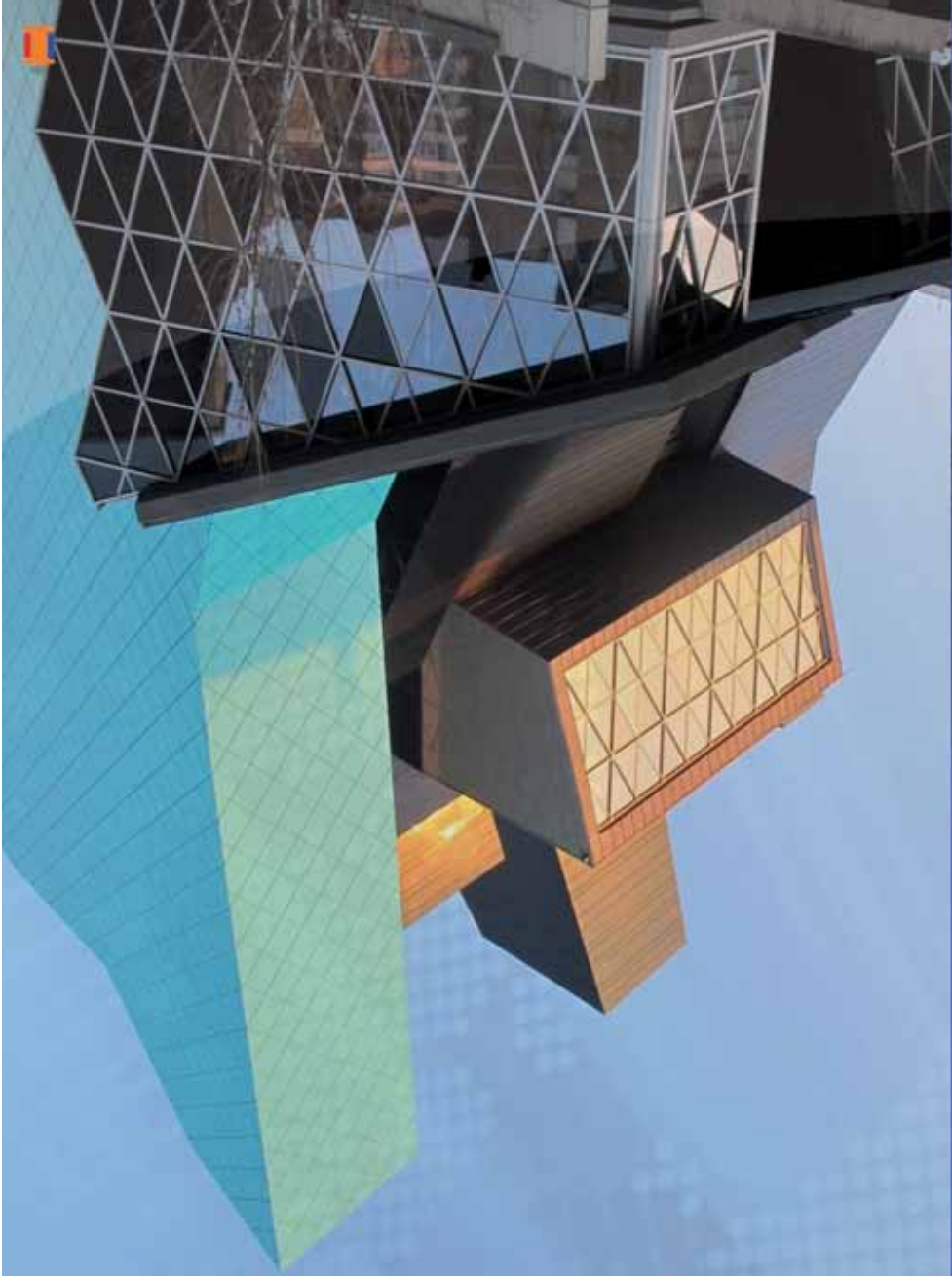
Hospitals  
Health Centers  
Homes for the Elderly

## Residential

Single Family Homes  
Home Owners Association







# SUSTAINABILITY

Opportunities for improved production, motivation of employees, respect for the environment and innovation or differentiation from the competition, are factors that, together with the ethical values of management level, are shown as intangible assets of our sustainable policy and commitment.

QUALITY AND CUSTOMER ORIENTATION

PROFESSIONALISM

HUMAN VALUE

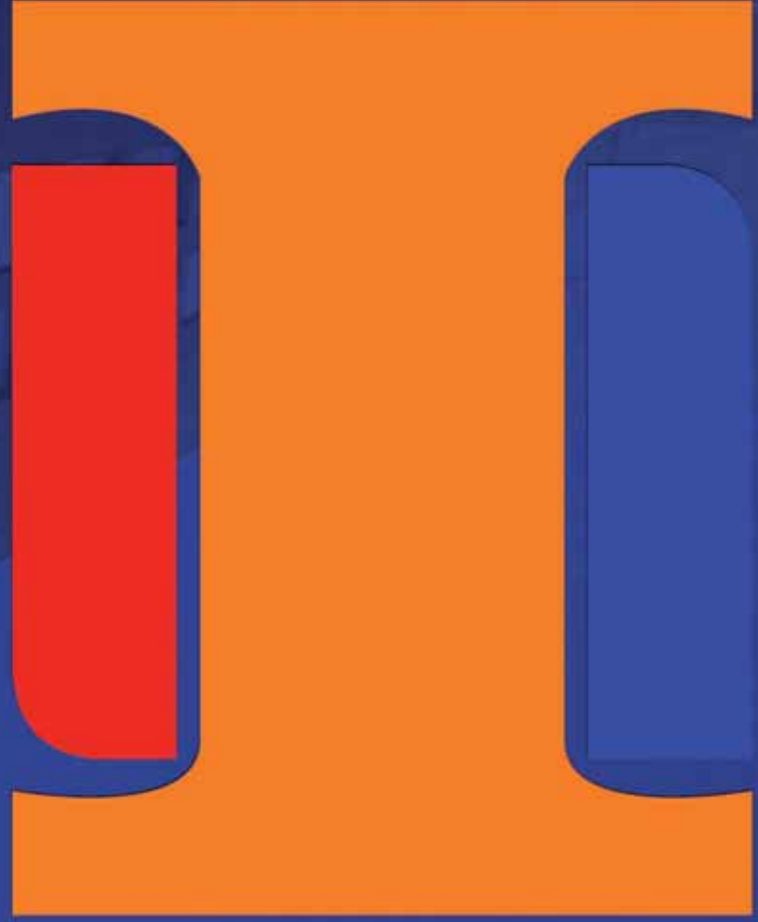
CONSISTENCY

COMMITMENT

INTEGRITY

RIGOR

# REFERENCES



## REFERENCES

RESEARCH CENTER FOR SPONGIFORM ENCEPHALOPATHY  
AND EMERGING DISEASES  
MINISTRY OF SCIENCE AND INNOVATION

**INCLIZA**, carried out the installation of air-conditioning, heating, ventilation, extraction and management facilities at the "Research Center for Spongiform Encephalopathy and Emerging Diseases". The result of an agreement between the Government of Aragón, the Ministry of Science and Innovation and the University of Zaragoza, the building is located within the premises of the Faculty of Veterinary and is a reference laboratory in Aragón for research that requires a high degree of safety in the field of biology, biomedicine and veterinary science.



SAN JORGE UNIVERSITY SCHOOL  
SAN VALERO FOUNDATION

**INCLIZA**, carried out the installation of air-conditioning, heating, ventilation, automation and centralized management facilities in two of the buildings of the San Jorge university campus.

- Rectorate Building  
- Faculty of Communication



## REFERENCES

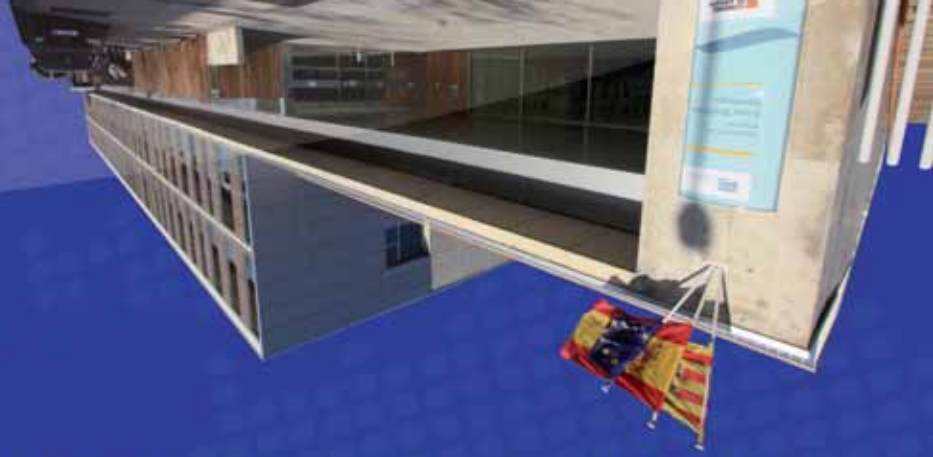


ELIAS MARTINEZ  
SANTIAGO RESIDENCE  
HOME AND DAY CENTER  
IASS - ARAGON INSTITUTE OF  
SOCIAL SERVICES  
GOVERNMENT OF ARAGON

**INCLIZA**, carried out the installation of air-conditioning, heating, ventilation, gas and centralized management facilities of the building. The following areas can be differentiated:

- Bedrooms floors
- Common services floors

Total useful floor area: 13,423,73 m2  
Total Cooling Power: 1,040 kW / Total Heating Power: 1,164 kW



## COMBINED CYCLE POWER PLANT ARRUBAL - LOGROÑO



Arrubal thermal plant is a combined cycle thermoelectric plant located in the municipality of Arrubal (La Rioja). It is fueled by natural gas. It has an installed capacity of 2 groups of 400 MWe each, and INCLIZA participated in the installation of air conditioning facilities in the office buildings and ventilation facilities in the turbines and water treatment buildings. It was built by Siemens and construction was completed in September 2005

## RIVER AQUARIUM INTERNATIONAL EXHIBITION - ZARAGOZA



**INCLIZA**, has taken part in the execution of various works in the ambitious action plan launched for the International Exhibition which was held in Zaragoza in 2008, among which we must highlight carrying out the installation of air conditioning and management facilities of one of the Theme pavilions at the International Exhibition:  
The River Aquarium.

## REFERENCES

### BEULAS FOUNDATION - CENTER FOR ART AND NATURE GDAN - HUESCA

**INCLIZA**, participated in the execution of the facilities of the Museum on the North Aragon painter José Beulas.  
The architectural project was made by Mr. José Rafael Moneo Valles. The City of Huesca, together with the Government of Aragon, has created a foundation for the promotion of contemporary art.  
There are several rooms for the display of the permanent collection as well as other spaces for both temporary exhibitions and educational workshops.

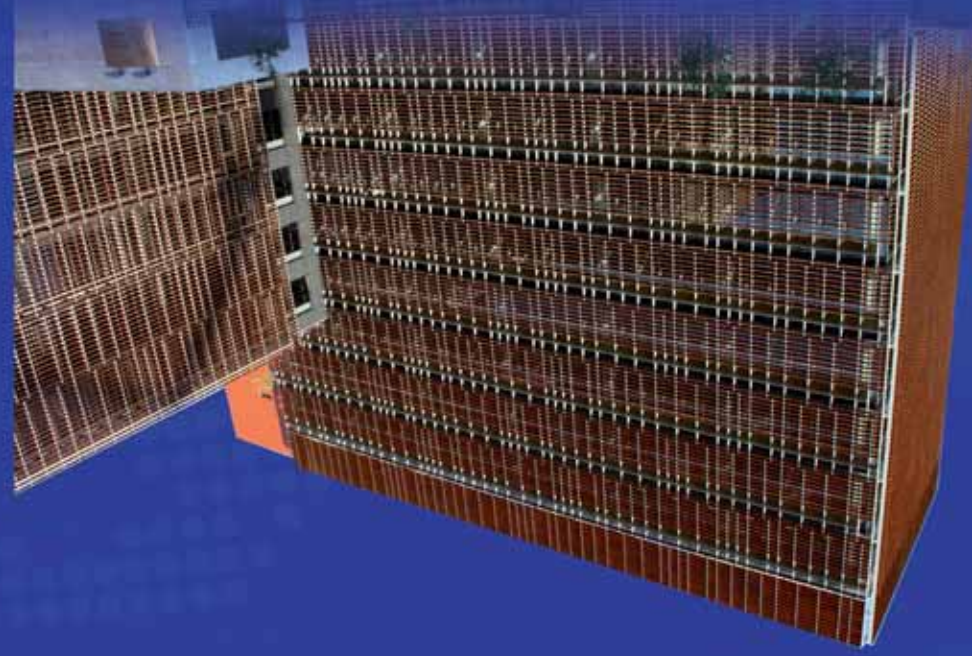


### INDUSTRIAL ENGINEERING TECHNICAL SCHOOL UNIVERSITY OF ZARAGOZA BETANCOURT BUILDING - RIO EBRO CAMPUS – ZARAGOZA

**INCLIZA**, participated in the design and installation of air-conditioning, heating ventilation and centralized management facilities of the building, located at Calle Maria de Luna s/n (Rio Ebro Campus) in Zaragoza, 3 water-water heat pump chillers, 3 intake wells and 1 disposal well have all been installed  
Total Cooling Power: 1,650 kW / Total Heating Power: 2,106 kW.



## REFERENCES



SPECIAL BRANCH OF THE MINISTRY OF ECONOMY AND FINANCE IN ARAGON  
MINISTRY OF ECONOMY AND FINANCE - ZARAGOZA

INCLIZA, carried out the installation of air-conditioning, heating, ventilation, garage fume extraction and centralized management facilities of the building, located at C/ José Albareda 18, in Zaragoza.

The total constructed area was 26,073 m<sup>2</sup>, divided into 10 floors.

Total Cooling Power: 1,628 kW / Total Heating Power: 1,400 kW

The facade perimeter zones are equipped with fan-coil four-tube units and with input from outside air and the inner area is conditioned by an all air system, with variable air flow, and constant flow temperature depending on outside temperature.

Free cooling by outside air and enthalpic type energy recovery.

- 4,000 m<sup>2</sup> Passenger Terminal Building
- Multi-purpose Building

INCLIZA, has carried out the installation of air conditioning and management facilities in the airport:

LOGROÑO AIRPORT  
AENA



Pablo Serrano Museum  
I.A.A.C.C. CENTER (Aragon Institute of Contemporary Art and Culture) - ZARAGOZA  
GOVERNMENT OF ARAGON

INCLIZA, has carried out the installation of air-conditioning, ventilation, humidity control and centralized management facilities of the building, under the guidance of architect Mr. José Manuel Pérez Latorre. Pablo Serrano Museum of Zaragoza has been converted into the Aragon Institute of Contemporary Art and Culture due to the development and promotion of the art policy and promotion of the Government of Aragon

Water-water system by installing 2 heat pump chillers.

Total Cooling Power: 1,316 kW / Total Heating Power: 1,042 kW

## REFERENCES



"AGUAS LIMPIAS SPA"  
URBAN SPA  
SALIENT DE GALLEGO - Huesca

3,000 m2 building for the latest services and technology in the field of sports activities in the aquatic environment and recreational leisure spa. INCLIZA has participated in the implementation, maintenance and management of the building.

- Swimming Pool Floor
- 25x10 m Heated swimming pool
- 35 m2 Heated splash pool
- Clean water-treatment Floor
- Vichy shower, Jet shower, whirlpool tubs
- Wellness Floor
- 1,000 m2 thermal circuit



SAN JUAN DE DIOS PSYCHOSOCIAL REHABILITATION CENTER

SAN JUAN DE DIOS CPR - Teruel

ARAGON HEALTH SERVICE

GOVERNMENT OF ARAGON

INCLIZA, participated in the design, installation, commissioning and maintenance of the facilities of the San Juan de Dios Psychosocial Rehabilitation Center located at Avenida de Zaragoza (Teruel).  
Total Cooling Power: 290.3 kW / Total Heating Power: 2,450 kW



## REFERENCES

VALDEFIERRO SOCIAL-EMPLOYMENT CENTER, YOUTH CENTER  
AND LEISURE CENTER  
ZARAGOZA CITY COUNCIL

**INCLIZA**, carried out the installation of the air-conditioning, heating, ventilation, extraction and centralized management facilities of the Valdefierro Social-Employment Center, Youth Center and Leisure Center. This building is one of the largest public facilities of the city of Zaragoza aimed at children and young people, where they can do sport or develop some kind of artistic and cultural activity.

The project was designed by architects Pablo J. Hernández Argudo and Pedro P. Minclán Tello. The building is equipped with classrooms, a library, computer room, welding shop and carpentry, offices, common areas, and multi-purpose meeting room. An air condensated water chiller for cooling as well as two gas condensing boilers have been installed.



EDIFICIO CRC – GUTIERREZ SOTO ZARAGOZA  
CENTRO DE REGULACION Y CONTROL AVE  
MADRID-BARCELONA  
ADIF

**INCLIZA** carried out the design and execution and maintains the technical facilities of the "Gutiérrez Soto" High Speed Regulation and Control Center in Zaragoza, next to the train station of Delicias. RCC buildings integrate all the technological systems involved in the regulation of high-speed rail traffic.

Cooling Power: 807.8 kW / Heating Power: 581.8 kW





## REFERENCES

ZARAGOZA HISTORY CENTER  
REHABILITATION OF FORMER SAN AGUSTIN CONVENT, STAGE 3  
ZARAGOZA CITY COUNCIL

**INCLIZA**, carried out the installation of the air-conditioning, heating and central management facilities of the building, during the Rehabilitation of San Agustín Convent, Stage 3, in order to turn it into Zaragoza History Center. The rehabilitation was carried out by Arq. 21, Arquitectura, Urbanismo y Gestión, S.L. and INCO Grupo JG, as plant engineering.

The building has a total built area of 7,277 m<sup>2</sup>, divided into different floors and premises with various purposes: Exhibition halls, Auditorium, Crypt (multi-purpose space), library, cafeteria, shop, locker rooms, kitchen, utility tunnel and technical facilities.

For the air conditioning facilities, full-air systems for the auditorium, crypt, exhibition halls, lobby, etc. have been combined with fan-coil systems for offices, control rooms, classrooms and self-contained units for the cafeteria and shop. The production plant consists of one water-water cooler, 1 intake well and 1 disposal well. The Total Cooling Power is: 498 kW

