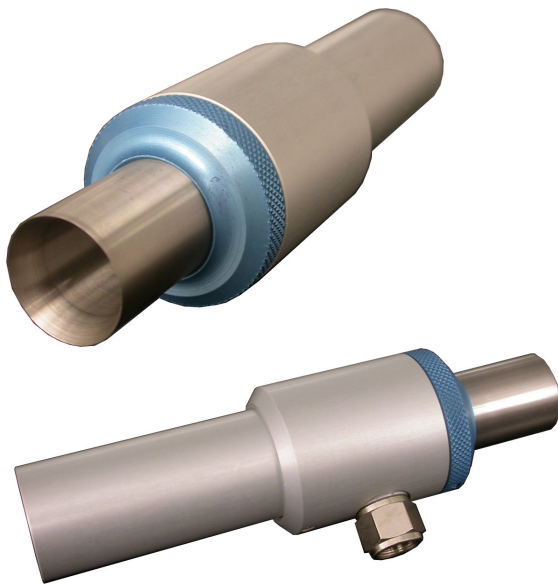


## EJECTORS



**Feed pressure:** 0 – 0.6 MPa  
**Material:** Al, SS  
**Working temperature:** -20–80° C

### Technical data

Type	Ejector 70	Ejector 150	Ejector 300
Air consumption, NI/s	0 – 6.29	0 – 16.6	0 – 33.3
Vacuum flow, NI/s	0 – 28.3	0 – 77.8	0 – 155.5
Maximum vacuum, -kPa	13	13	13
Maximum vacuum (with insert), -kPa	22	22	22
Weight, g	400	700	1200

### Order form for ejectors

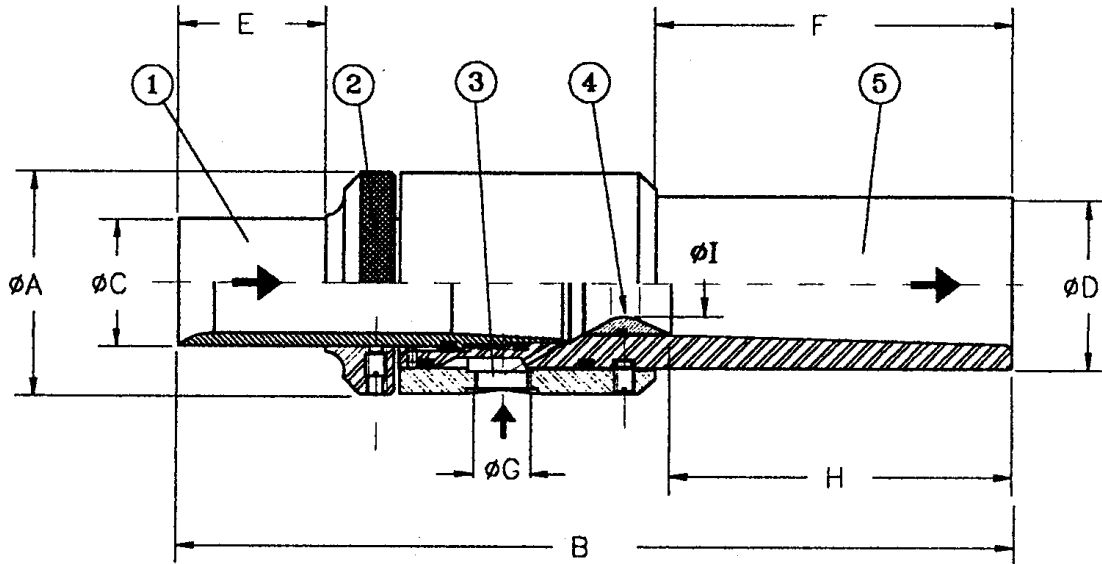
Type	Ejector 70	Ejector 150	Ejector 300
Aluminum body	31 08 015	31 08 011	31 08 001
Stainless steel body	31 08 016	31 08 012	31 08 002

### Order form for insert

Type	Ejector 70	Ejector 150	Ejector 300
Aluminum insert	–	31 08 013	31 08 003
Stainless steel insert	–	31 08 014	31 08 004

## EJECTORS

- 1 – Suction
- 2 – Flow control nut
- 3 – Compressed air connection
- 4 – Insert (optional)
- 5 – Exhaust



## Dimensions

Type	Ejector 70	Ejector 150	Ejector 300
A, mm	32	45	65
B, mm	106	165	250
C, mm	16.5	25	37
D, mm	22	33	50
E, mm	17.5	20	45
F, mm	55.5	70	104
G	1/8"	1/4"	3/8"
H, mm	42.4	67	98
I, mm	8.5	13.3	20