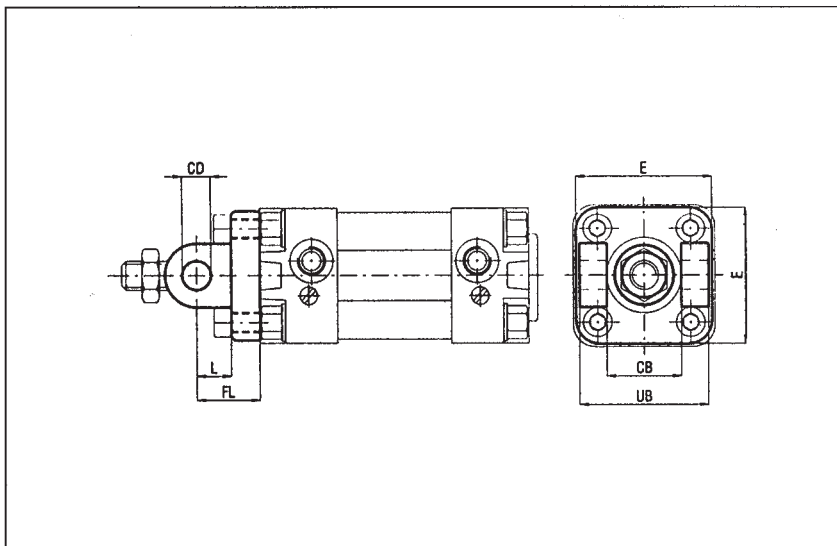


Accesorios para cilindros serie CPUI - ISO 6431 - VDMA / DIN 24562 y Serie X - ISO 15552

Charnela hembra anterior - no a norma ISO VDMA - aluminio - Ref.: CPUI/CFAØ/T **Bajo pedido**

Ø	CB H14	CD H9	E	FL	L	UB h14	PESO g
32	26	10	45	22	13	45	48
40	28	12	52	25	14	52	75
50	32	12	65	27	16	60	124
63	40	16	75	32	21	70	192
80	50	16	95	36	22	90	380
100	60	20	115	41	27	110	620
125	70	25	140	50	30	130	1180
160	90	30	180	55	35	170	1780
200	90	30	220	60	35	170	2900

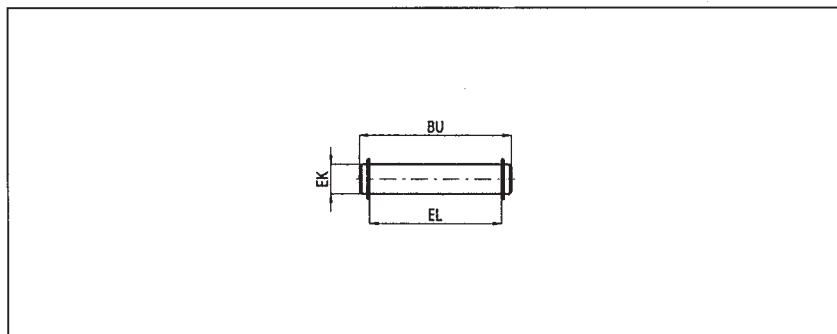
Ø	Referencia
32	CPUI/CFA32T
40	CPUI/CFA40T
50	CPUI/CFA50T
63	CPUI/CFA63T
80	CPUI/CFA80T
100	CPUI/CFA100T
125	CPUI/CFA125T
160	CPUI/CFA160T
200	CPUI/CFA200T



Perno de acero nitrurado cincado, para charnela posterior de aluminio - Ref.: CPUI/SECØ

Perno de acero nitrurado cincado, para charnela posterior de acero - Ref.: CPUI/SECØAC **Bajo pedido**

Ø	BU	EK f7	EL	PESO g	Ø	Referencia
32	53	10	46	32	32	CPUI/SEC32
40	60	12	53	52	40	CPUI/SEC40
50	68	12	61	60	50	CPUI/SEC50
63	78	16	71	122	63	CPUI/SEC63
80	98	16	91	152	80	CPUI/SEC80
100	118	20	111	290	100	CPUI/SEC100
125	139	25	132	530	125	CPUI/SEC125
160	178	30	171,5	978	160	CPUI/SEC160
200	178	30	171,5	978	200	CPUI/SEC200

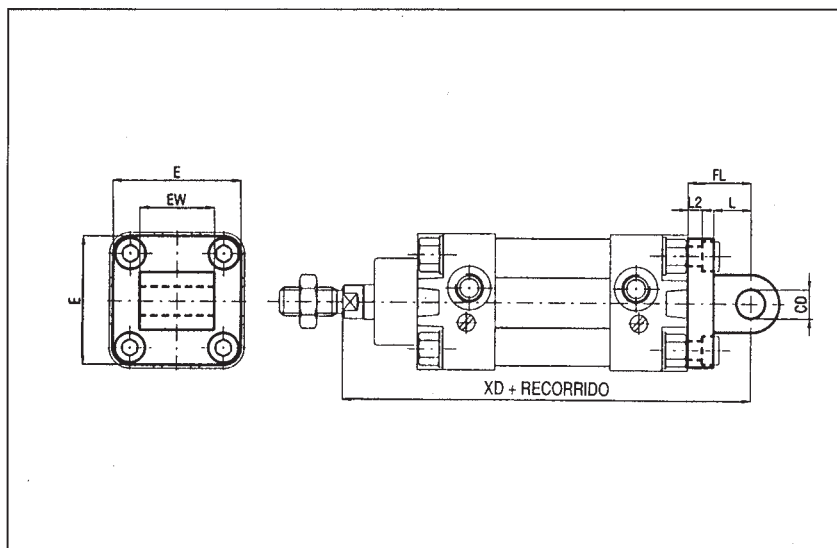


Charnela macho - aluminio - Ref.: CPUI/CMØ
- acero - Ref.: CPUI/CMØAC **Bajo pedido**

Ø	CD H9	E	EW	FL	L	L2	XD
32	10	45	26	22	13	5,5	142
40	12	52	28	25	16	5,5	160
50	12	65	32	27	16	6,5	170
63	16	75	40	32	21	6,5	190
80	16	95	50	36	22	10	210
100	20	115	60	41	27	10	230
125	25	140	70	50	30	10	275
160	30	180	90	55	35	10	315
200	30	220	90	60	35	11	335

Ø	PESO ALL g	PESO ACC. g
32	54	176
40	76	274
50	124	368
63	212	682
80	420	1196
100	666	2100
125	1264	-
160	1846	-
200	2950	-

Ø	Referencia
32	CPUI/CM32
40	CPUI/CM40
50	CPUI/CM50
63	CPUI/CM63
80	CPUI/CM80
100	CPUI/CM100
125	CPUI/CM125
160	CPUI/CM160
200	CPUI/CM200





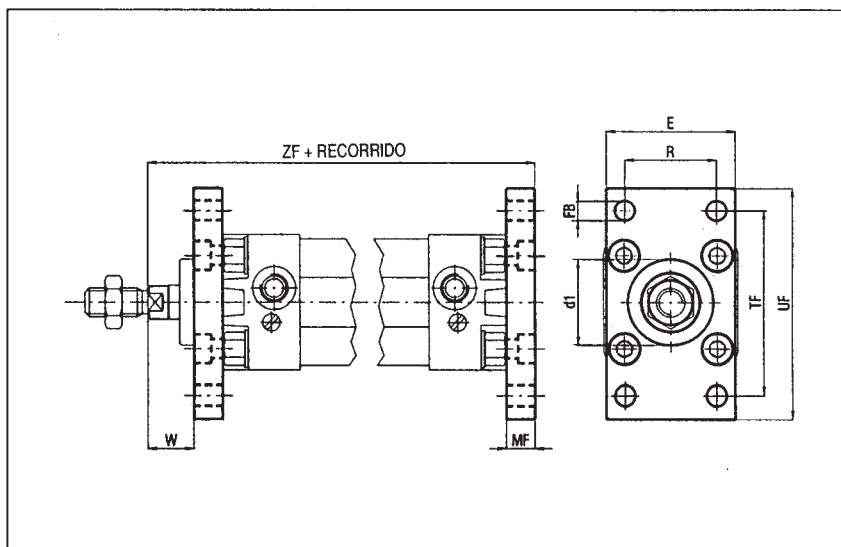
Accesorios para cilindros serie CPUI - ISO 6431 - VDMA / DIN 24562 y Serie X - ISO 15552

Brida - acero - Ref.: CPUI/FØ

Ø	d1 H11	FB H13	E	MF JS14	R JS14	TF JS14	UF
32	30	7	45	10	32	64	80
40	35	9	52	10	36	72	90
50	40	9	65	12	45	90	110
63	45	9	75	12	50	100	120
80	45	12	95	16	63	126	150
100	55	14	115	16	75	150	170
125	60	16	140	20	90	180	205
160	65	18	180	20	115	230	260
200	75	22	220	25	135	270	300

Ø	W	ZF	PESO g
32	16	130	190
40	20	145	246
50	25	155	478
63	25	170	622
80	30	190	1430
100	35	205	1986
125	45	245	3750
160	60	280	6350
200	70	300	11350

Ø	Referencia
32	CPUI/F32
40	CPUI/F40
50	CPUI/F50
63	CPUI/F63
80	CPUI/F80
100	CPUI/F100
125	CPUI/F125
160	CPUI/F160
200	CPUI/F200

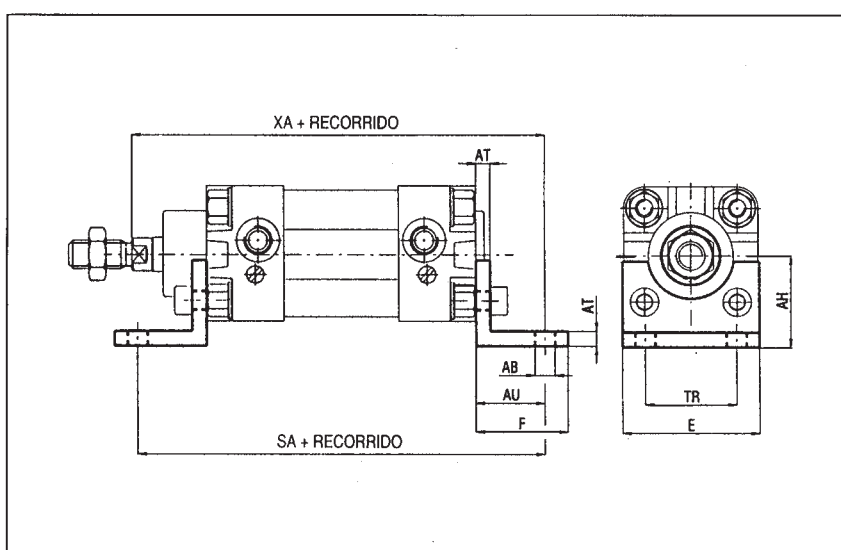


Pata baja - acero - Ref.: CPUI/PBØ

Ø	AB H14	AH JS15	AT	AU	E	F	SA
32	7	32	4	24	45	35	142
40	9	36	4	28	52	36	161
50	9	45	5	32	65	47	170
63	9	50	5	32	75	45	185
80	12	63	6	41	95	55	210
100	14	71	6	41	115	57	220
125	16	90	8	45	140	70	250
160	18	115	10	60	180	75	300
200	22	135	12	70	220	100	320

Ø	TR JS14	XA	PESO g
32	32	144	66
40	36	163	78
50	45	175	168
63	50	190	190
80	63	215	382
100	75	230	452
125	90	270	1090
160	115	320	1188
200	135	345	3450

Ø	Referencia
32	CPUI/PB32
40	CPUI/PB40
50	CPUI/PB50
63	CPUI/PB63
80	CPUI/PB80
100	CPUI/PB100
125	CPUI/PB125
160	CPUI/PB160
200	CPUI/PB200



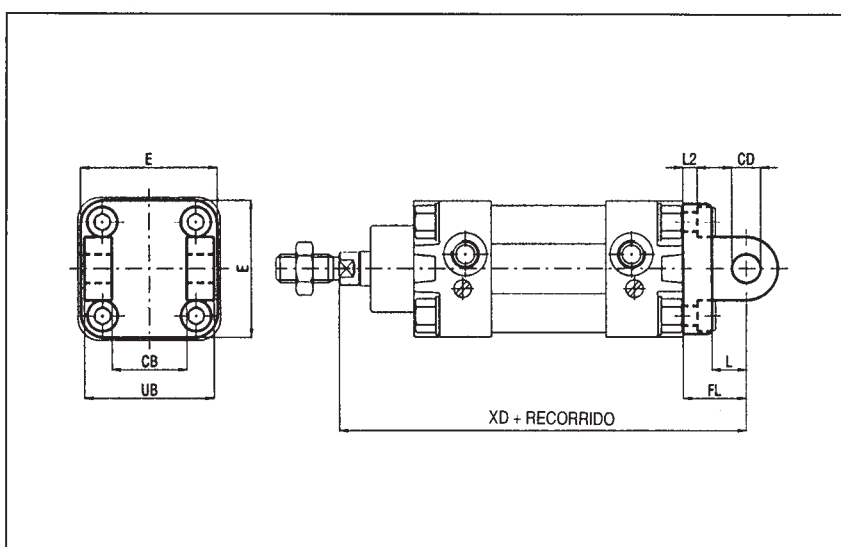
Charnela hembra posterior - aluminio - Ref.: CPUI/CFØ

- acero - Ref.: CPUI/CFØAC Bajo pedido

Ø	CB H14	CD H9	E	FL	L	L2	UB h14
32	26	10	45	22	13	5,5	45
40	28	12	52	25	16	5,5	52
50	32	12	65	27	16	6,5	60
63	40	16	75	32	21	6,5	70
80	50	16	95	36	22	10	90
100	60	20	115	41	27	10	110
125	70	25	140	50	30	10	130
160	90	30	180	55	35	10	170
200	90	30	220	60	35	11	170

Ø	XD	PESO ALL g	PESO ACC. g
32	142	48	138
40	160	75	230
50	170	124	338
63	190	192	540
80	210	380	1000
100	230	620	1700
125	275	1180	3350
160	315	1780	5750
200	335	2900	8900

Ø	Referencia
32	CPUI/CF32
40	CPUI/CF40
50	CPUI/CF50
63	CPUI/CF63
80	CPUI/CF80
100	CPUI/CF100
125	CPUI/CF125
160	CPUI/CF160
200	CPUI/CF200



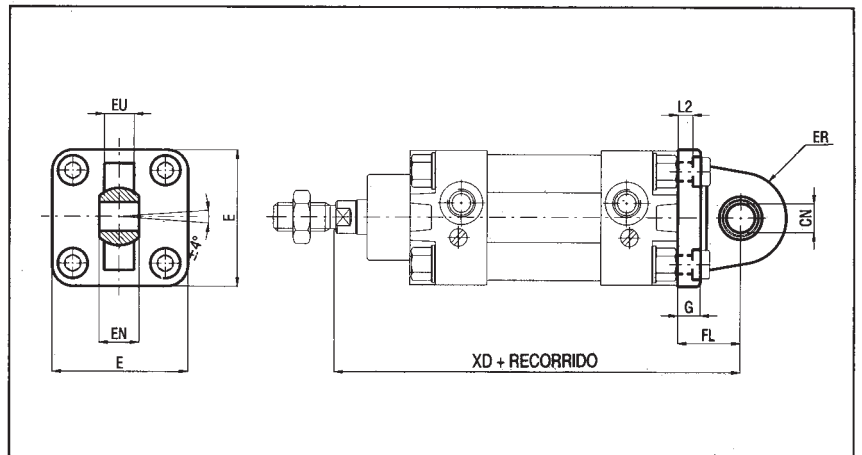
Accesorios para cilindros serie CPUi - ISO 6431 - VDMA / DIN 24562 y Serie X - ISO 15552

Charnela macho estrecha con rótula - aluminio - Ref.: CPUi/CMSSØ
- acero - Ref.: CPUi/CMSSØAC

Bajo pedido
Bajo pedido

Ø	CN H7	E	EN	ER	EU	G	FL
32	10	45	14	16	10,5	9	22
40	12	52	16	19	12	9	25
50	16	65	21	21	15	11	27
63	16	75	21	24	15	11	32
80	20	95	25	28,5	18	14	36
100	20	115	25	30	18	14	41
125	30	140	37	40	25	20	50
160	35	180	43	45	28	20	55
200	35	220	43	48	28	25	60

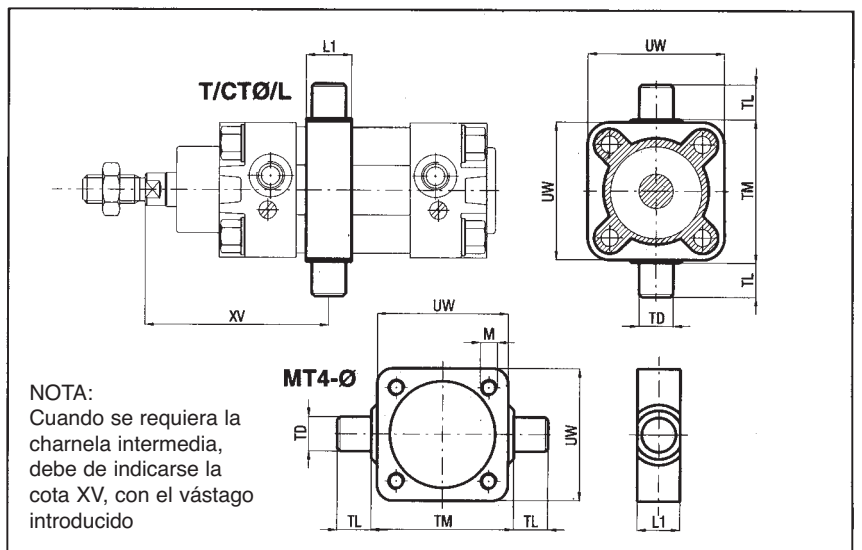
Ø	L2	XD	PESO ALL g	PESO ACC. g	Ø	Referencia
32	5,5	142	62	158	32	CPUI/CMSS32AC
40	5,5	160	100	254	40	CPUI/CMSS40AC
50	6,5	170	180	360	50	CPUI/CMSS50AC
63	6,5	190	244	588	63	CPUI/CMSS63AC
80	10	210	476	1118	80	CPUI/CMSS80AC
100	10	230	646	1810	100	CPUI/CMSS100AC
125	10	275	1410	3500	125	CPUI/CMSS125AC
160	10	315	2385	-	160	CPUI/CMSS160AC
200	11	335	3860	-	200	CPUI/CMSS200AC



Charnela intermedia Ø 32 ÷100 - acero - perfil lobulado - Ref.: T/CTØ/L
Ø 32 ÷200 - acero - tubo cilíndrico - Ref.: MT4-Ø

Ø	L1	M	TD e9	TL h14	TM h14	UW	XV min
32	18	-	12	12	50	48,5	62
40	20	-	16	16	63	59	70
50	20	-	16	16	75	71	79,5
63	26	-	20	20	90	85	87
80	26	-	20	20	110	105	96
100	32	-	25	25	132	129	107
125	32	M12	25	25	160	155	127
160	40	M16	32	32	200	190	150
200	40	M16	32	32	250	240	163

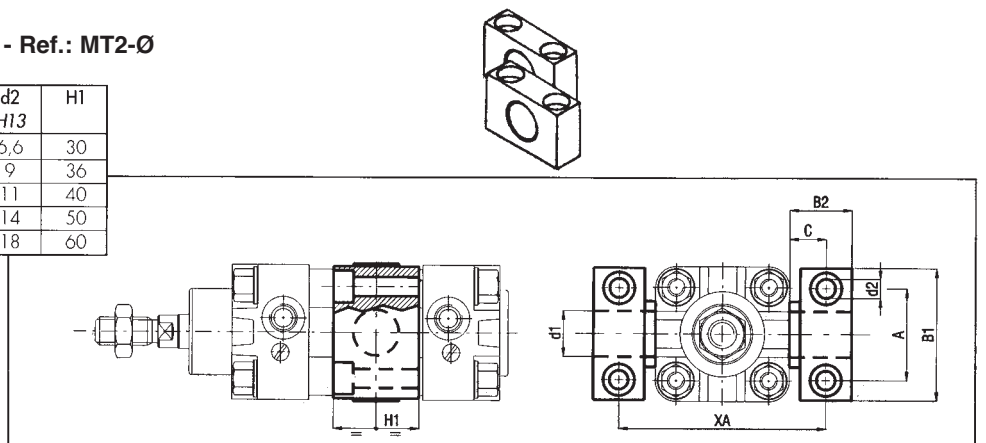
Ø	XV max	PESO g	Ø	Referencia
32	84	130	32	T/CT32/L
40	95	238	40	T/CT40/L
50	100,5	318	50	T/CT50/L
63	108	608	63	T/CT63/L
80	124	928	80	T/CT80/L
100	139	1562	100	T/CT100/L
125	163	2600	125	MT4-125
160	190	4300	160	MT4-160
200	207	7450	200	MT4-200



Soporte charnela intermedia - acero - Ref.: MT2-Ø

Ø	A	B1	B2	C	d1 F7	d2 H13	H1
32	32	46	18	10,5	12	6,6	30
40-50	36	55	21	12	16	9	36
63-80	42	65	23	13	20	11	40
100-125	50	75	28,5	16	25	14	50
160-200	60	92	40	22,5	32	18	60

Ø	XA	PESO g	Ø	Referencia
32	71	100	32	MT2-032(par)
40-50	87-99	150	40-50	MT2-040/050(par)
63-80	116-136	234	63-80	MT2-063/080(par)
100-125	164-192	435	100-125	MT2-100/125(par)
160-200	245-295	850	160-200	MT2-160/200(par)



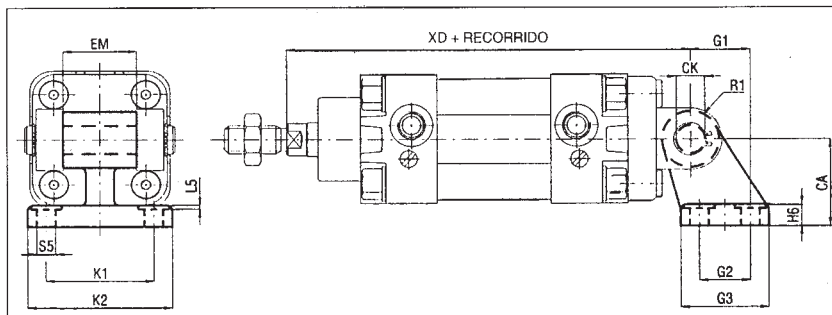


Accesorios para cilindros serie CPUI - ISO 6431 - VDMA / DIN 24562 y Serie X - ISO 15552

Articulación escuadra 90° - CETOP RP 107 P - aluminio - Ref.: CPUI/ASØ

- acero - Ref.: CPUI/ASØAC **Bajo pedido**

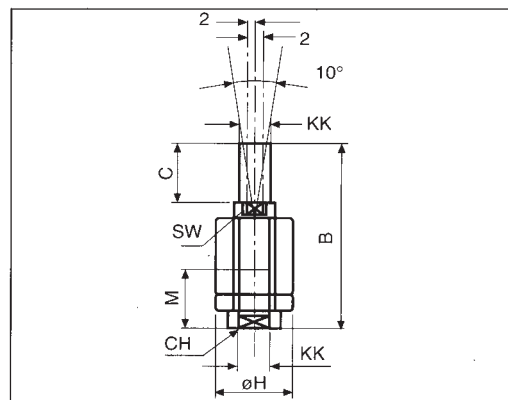
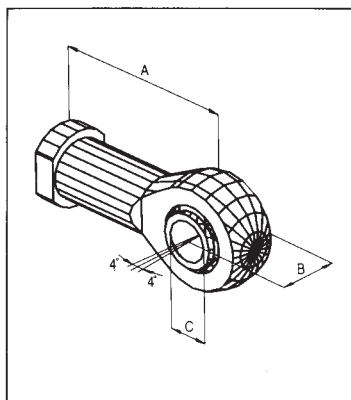
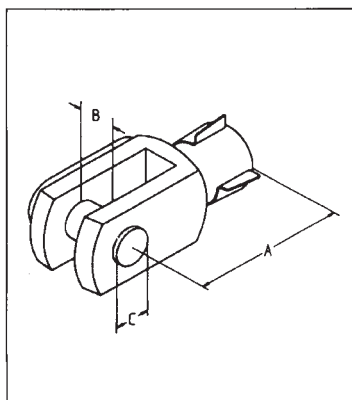
Ø	CA JS15	CK H9	EM	G1 JS14	G2 JS14	G3	H6	L5
32	32	10	26	21	18	31	8	1,6
40	36	12	28	24	22	35	10	1,6
50	45	12	32	33	30	45	12	1,6
63	50	16	40	37	35	50	14	1,6
80	63	16	50	47	40	60	14	2,5
100	71	20	60	55	50	70	17	2,5
125	90	25	70	70	60	90	20	3,2
*160	140	30	89	160	110	154	20	-
*200	140	30	89	160	110	154	20	-



Ø	R1	S5 H13	K1 JS14	K2	XD	PESO ALL. g	PESO ACC. g
32	10	6,6	38	51	142	56	158
40	11	6,6	41	54	160	139	238
50	13	9	50	65	170	142	418
63	15	9	52	67	190	200	526
80	15	11	66	86	210	312	1055
100	19	11	76	96	230	656	1360
125	22,5	14	94	124	275	826	-
*160	26,75	18	63	110	491	1922	-
*200	26,75	18	63	110	495	1922	-

Ø	Referencia
32	CPUI/AS32
40	CPUI/AS40
50	CPUI/AS50
63	CPUI/AS63
80	CPUI/AS80
100	CPUI/AS100
125	CPUI/AS125
160	CPUI/AS160
200	CPUI/AS200

Accesorios para el acoplamiento mecánico del vástago



Ø cilindro	A	B	C	REF.
32	40	10	10	T/FF 10
40	48	12	12	T/FF 12
50/63	64	16	16	T/FF 16
80/100	80	20	20	T/FF 20
125	110	30	30	T/FF 27
160/200	144	35	35	T/FF 36

Ø cilindro	A	B	C	REF.
32	43	14	10	T/FR 10
40	50	16	12	T/FR 12
50/63	64	21	16	T/FR 16
80/100	77	25	20	T/FR 20
125	110	37	30	T/FR 27
160/200	125	43	35	T/FR 36

Ø cilindro	B	C	H	M	CH	SW	KK	REF.
32	71	20	32	20	19	12	M10X1,25	220 FS 32
40	75	24	32	20	19	12	M12X1,25	230 FS 40
50-63	103	32	45	32	30	20	M16X1,5	660 FS 50-63
80-100	119	40	45	40	30	20	M20X1,5	700 FS 80-100