

PINZAS NEUMÁTICAS PARA APLICACIONES INDUSTRIALES

A continuación mostramos una amplia gama de pinzas neumáticas para todo tipo de aplicaciones industriales, indicando a su vez las características de cada una.

**HDS series
FULCRUM TYPE
MINI CHUCK**



Model	Bore Size mm	Operation		Angle	Pressure Range Kg/cm ² (KPa)
HDS-10	10	Double Acting	Single Acting	- 10°~+30°	1.5-7.0 (150-700)
HDS-16	16				
HDS-20	20				
HDS-25	25				
HDS-32	32				

**HDM series
180°MINI CHUCK**



Model	Bore Size mm	Operation	Close Angle	Pressure Range Kg/cm ² (KPa)
HDM-16	16	Double Acting	- 6°~+180°	1.5-7.0 (150-700)
HDM-20	20			
HDM-25	25			
HDM-32	32			

**HDP series
PARALLEL TYPE MINI CHUCK**



Model	Bore Size mm	Operation	Opening Stroke mm	Holding Force Kgf	Pressure Range Kg/cm ² (KPa)
HDP-10	10	Double Acting	4	0.8	1.5-7.0 (150-700)
HDP-16	16		8	1.8	
HDP-20	20		12	3.5	
HDP-25	25		14	6.0	
HDP-32	32		16	8.5	

PINZAS NEUMÁTICAS PARA APLICACIONES INDUSTRIALES

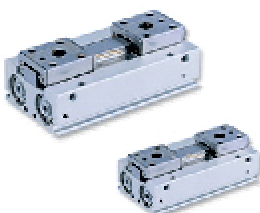
**HDK series
PARALLEL GUIDE
TYPE MINI CHUCK**



Model	Bore Size mm	Operation	Opening Stroke mm	Holding Force Kgf	Pressure Range Kgf/cm ² (KPa)
HDK-16	16	Double Acting	6	1.8	1.5-7.0 (150-700)
HDK-20	20		9	3.5	
HDK-25	25		14	6.0	
HDK-32	32		16	8.5	

Note: Operated the parallel guide bearing, suitable for precise non-shaking operation.

**HDF series
PARALLEL GUIDE
TYPE MINI CHUCK**



Model	Bore Size mm	Operation	Opening Stroke mm	Holding Force Kgf	Pressure Range Kgf/cm ² (KPa)
HDF-12	12	Double Acting	12,24,48	40 (4.1)	1.5-7.0 (150-700)
HDF-16	16		16,32,64	72 (7.3)	
HDF-20	20		20,40,80	115 (11.7)	

**HDZ series
PARALLEL GUIDE
TYPE MINI CHUCK**



Model	Bore Size mm	Operation	Opening Stroke mm	Holding Force Kgf	Pressure Range Kgf/cm ² (KPa)
HDZ-10	10	Double Acting	4	1.4 (14)	Double Acting:2.0~7.0 (200~700)
HDZ-16	16		6	4.5 (44)	Double Acting:1.0~7.0 (100~700)
HDZ-20	20		10	7.4 (7.3)	
HDZ-25	25		14	13.1 (128)	
HDZ-32	32		22	22.9 (191)	
HDZ-40	40		30	115(11.7)	

PINZAS NEUMÁTICAS PARA APLICACIONES INDUSTRIALES

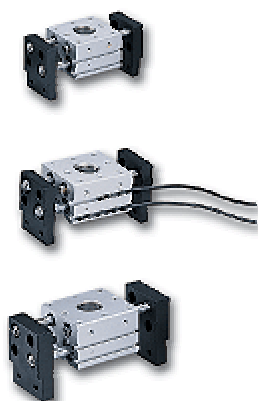
**HDL series
PARALLEL GUIDE
TYPE MINI CHUCK**



Model	Bore Size mm	Operation	Opening Stroke mm	Holding Force Kgf	Pressure Range Kg/cm ² (KPa)
HDL-20	20	Double Acting	14	3 (29)	2.0-7.0 (200-700)
HDL-32	32		16	10 (98)	

Note: Theoretical Thrust:When air supply to be 5kgf/cm²

**HDT series
RACK PARALLEL GUIDE
TYPE MINI CHUCK**



Model	Bore Size mm	Operation	Opening Stroke mm	Holding Force N (Kgf)	Pressure Range Kg/cm ² (KPa)
HDT-1020	10	Double Acting	20	1.4 (14)	1.5-7.0 (150-700)
HDT-1040			40		
HDT-1060			60		
HDT-1630	16		30	4.5 (44)	
HDT-1660			60		
HDT-1680			80		
HDT-2040	20		40	7.4 (73)	
HDT-2080			80		
HDT-20100			100		
HDT-2550	25		50	13.1 (128)	
HDT-25100			100		
HDT-25120			120		
HDT-3270	32		70	22.9 (191)	
HDT-32120			120		
HDT-32160			160		

Note: 1. Theoretical Thrust:When air supply to be 5kgf/cm²

2. When holding point is mini chuck with 30mm arm calculation value.

**HDR series
THREE POINT CHUCK**



Model	Bore Size mm	Operation	Opening Stroke mm	Holding Force N (Kgf)	Pressure Range Kg/cm ² (KPa)
HDR-25	25	Double Acting	6	40 (4.1)	1.5-7.0 (150-700)
HDR-32	32		8	72 (7.3)	
HDR-40	40		8	115 (11.7)	
HDR-50	50		12	180 (18.3)	
HDR-63	63		16	330 (33.6)	