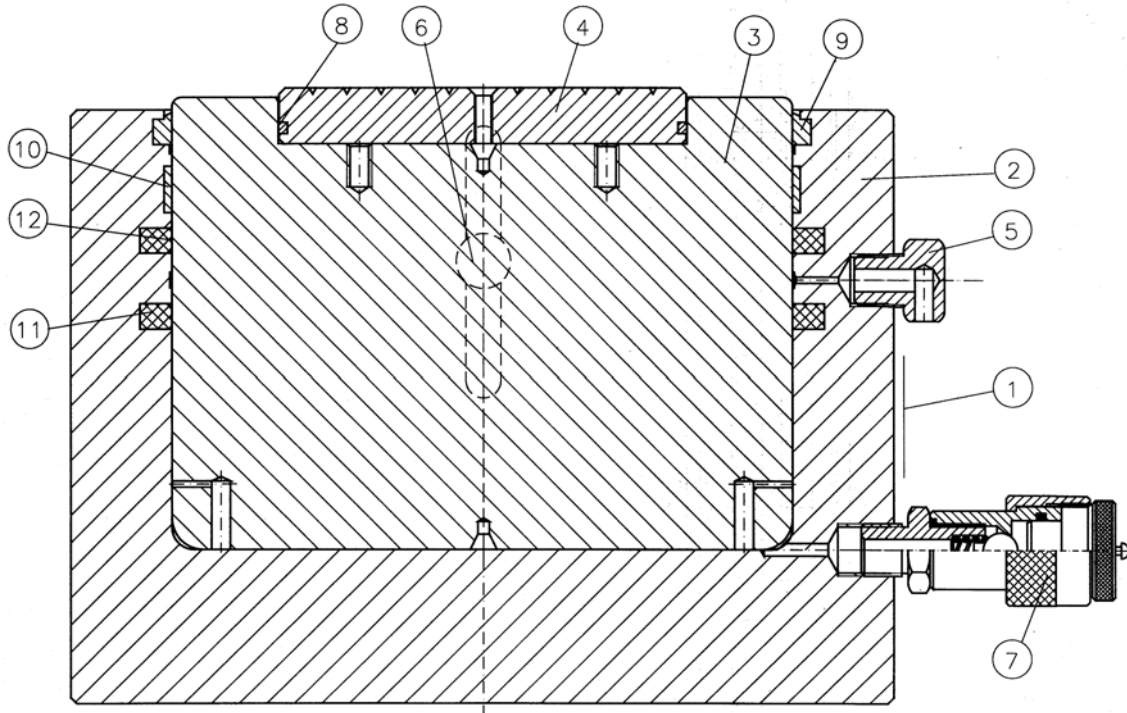


**SS35005 SS35010 SS35015 SS35025**



	<b>SS35005</b>	<b>SS35010</b>	<b>SS35015</b>	<b>SS35025</b>
	<i>JR.SS350A*</i>	<i>JR.SS350A*</i>	<i>JR.SS350A*</i>	<i>JR.SS350A*</i>
<b>1</b>	30A0056	30A0056	30A0056	30A0056
<b>2</b>	52D0231	52D0240	52D0125	52D0133
<b>3</b>	53D0149	53D0158	53D0125	53D0132
<b>4</b>	56D0036	56D0036	56D0036	56D0036
<b>5</b>	15L0053	15L0053	15L0053	15L0053
<b>6</b>	(2) 24D0016	(2) 24D0016	(2) 24D0016	(2) 24D0016
<b>7</b>	AZ3140	AZ3140	AZ3140	AZ3140
<b>*8</b>	12A0040	12A0040	12A0040	12A0040
<b>*9</b>	12H0094	12H0094	12H0094	12H0094
<b>*10</b>	08G0011	08G0011	08G0011	08G0011
<b>*11</b>	12B0240	12B0240	12B0240	12B0240
<b>*12</b>	12B0241	12B0241	12B0241	12B0241

LARZEP S.A.  
 Avda. Urutiaga, 6. 48269 MALLABIA (Vizcaya).Spain  
 P.O.Box,27. 20600 Eibar (Guipúzcoa). Spain  
 Tel. (+34) 943-171200 - Fax. (+34) 943-174166  
 e-MAIL: [hydraulic@larzep.com](mailto:hydraulic@larzep.com)  
[www.larzep.com](http://www.larzep.com)

LARZEP HYDRAULIC (UK) LTD  
 UNIT 1A PARK ROAD INDUSTRIAL ESTATE  
 CONSETT CO.DURHAM DH85PU. ENGLAND  
 Tel. (+44)- 1207-582266 - Fax. (+44)- 1207-583366  
 e-MAIL: [enquire@larzep.co.uk](mailto:enquire@larzep.co.uk)  
[www.larzep.com](http://www.larzep.com)