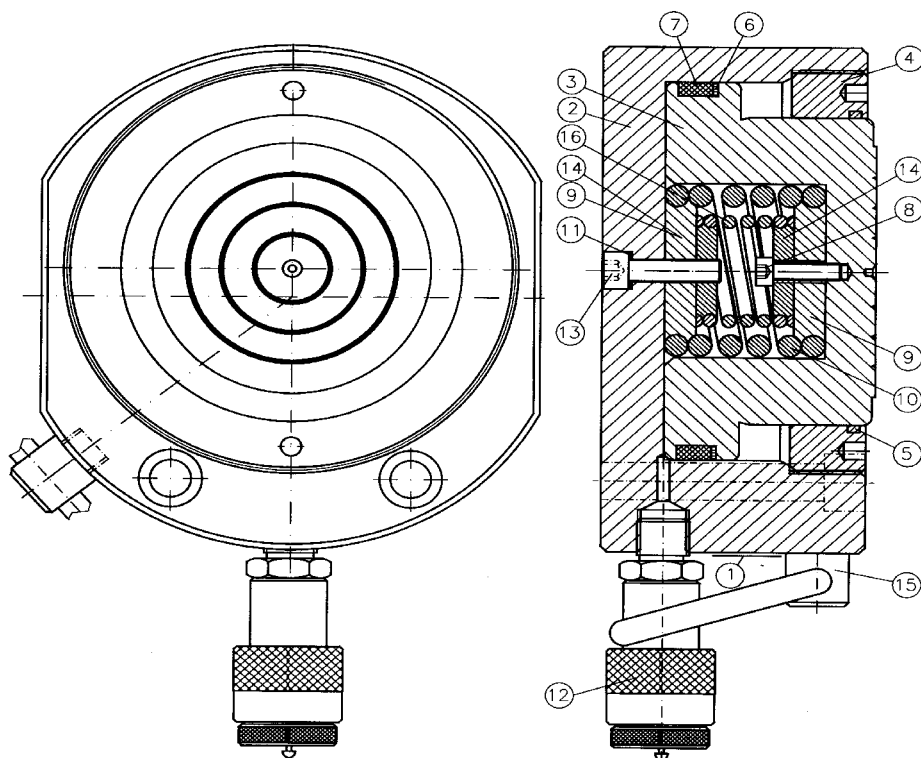


SMX05016 SMX07516 SMX10016 SMX15016



	SMX05016	SMX07516	SMX10016	SMX15016
	JR.SMX05016*	JR.SMX07516*	JR.SMX10016*	JR.SMX15016*
1	30A0016	30A0016	30A0017	30A0017
2	52M0005	52M0008	52M0006	52M0009
3	53L0005	53L0008	53L0006	53L0009
4	55K0005	55K0008	55K0006	55K0007
*5	12A0028	12A0072	12A0029	12A0066
*6	57A0040	57A0080	57A0050	57A0079
*7	12A0070	12A0095	12A0092	12A0093
8	14A0002	14A0016	14A0016	14A0017
9	(2) 24F0034	(2) 24F0027	(2) 24F0027	(2) 24F0028
10	13A0038	13A0052	13A0052	13A0054
*11	57B0001	57B0001	57B0005	57B0005
12	AZ3140	AZ3140	AZ3140	AZ3140
13	14A0016	14A0047	14A0047	14A0034
14	---	---	---	(2) 24F0033
15	---	---	33C0004	33C0004
16	---	---	---	13A0036

LARZEP S.A.
 Avda. Urtiaga, 6. 48269 MALLABIA (Vizcaya).Spain
 P.O.Box,27. 20600 Eibar (Guipúzcoa). Spain
 Tel. (+34) 943-171200 - Fax. (+34) 943-174166
 e-MAIL: hydraulic@larzep.com
www.larzep.com

LARZEP HYDRAULIC (UK) LTD
 UNIT 1A PARK ROAD INDUSTRIAL ESTATE
 CONSETT CO.DURHAM DH85PU. ENGLAND
 Tel. (+44)- 1207-582266 - Fax. (+44)- 1207-583366
 e-MAIL: enquire@larzep.co.uk
www.larzep.com