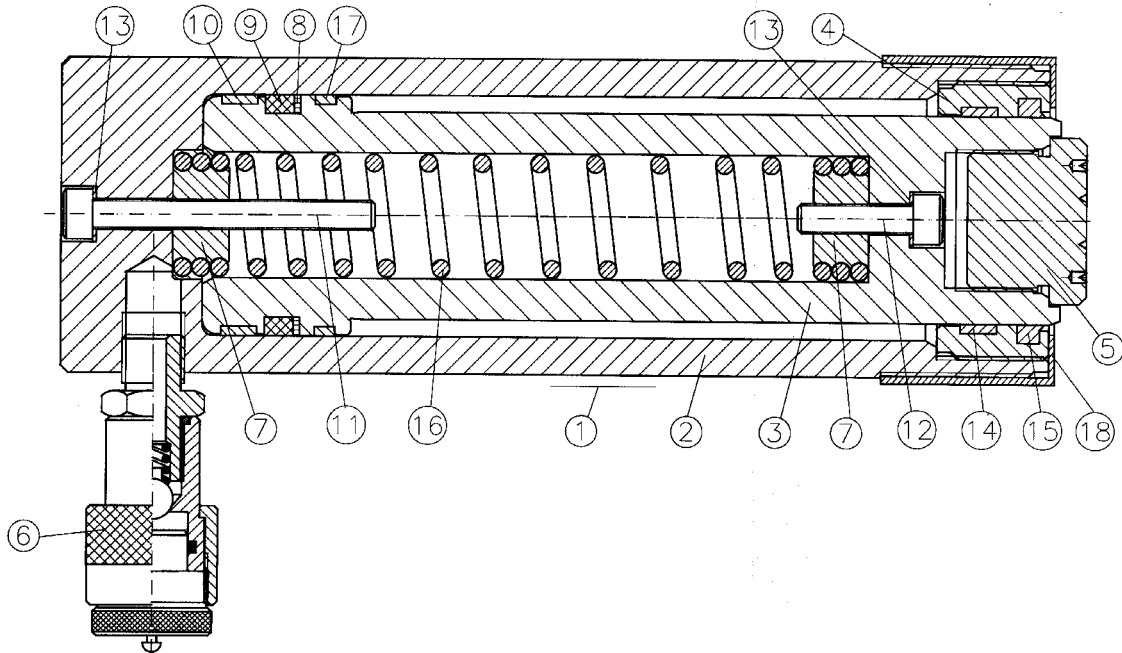


SM02302 SM02305 SM02310 SM02315 SM2321 SM02326 SM02331 SM02336



	SM02302	SM02305	SM02310	SM02315	SM2321	SM02326	SM02331	SM02336
	<i>JR.SM023A*</i>	<i>JR.SM023A*</i>	<i>JR.SM023A*</i>	<i>JR.SM023B*</i>	<i>JR.SM023B*</i>	<i>JR.SM023B*</i>	<i>JR.SM023B*</i>	<i>JR.SM023B*</i>
1	30A0017	30A0017	30A0017	30A0017	30A0017	30A0017	30A0017	30A0017
2	52E0129	52E0128	52E0130	52E0124	52E0151	52E0155	52E0125	52E0154
3	53E0122	53E0121	53E0123	53E0116	53E0144	53E0148	53E0117	53E0147
4	55E0057	55E0057	55E0057	55E0057	55E0057	55E0057	55E0057	55E0057
5	56E0028	56E0028	56E0028	56E0028	56E0028	56E0028	56E0028	56E0028
6	AZ3140	AZ3140	AZ3140	AZ3140	AZ3140	AZ3140	AZ3140	AZ3140
7	(2) 24F0077	(2) 24F0077	(2) 24F0077	(2) 24F0077	(2) 24F0077	(2) 24F0077	(2) 24F0077	(2) 24F0077
*8	57A0019	57A0019	57A0019	57A0019	57A0019	57A0019	57A0019	57A0019
*9	12B0094	12B0094	12B0094	12B0094	12B0094	12B0094	12B0094	12B0094
*10	(2) 58F0112	(2) 58F0112	(2) 58F0112	58F0164	58F0164	58F0164	58F0164	58F0164
11	14A0034	14A0115	14A0127	14A0127	14A0127	14A0127	14A0127	14A0138
12	14A0047	14A0047	14A0034	14A0052	14A0052	14A0052	14A0052	14A0052
*13	(2) 57B0005	(2) 57B0005	(2) 57B0005	(2) 57B0005	(2) 57B0005	(2) 57B0005	(2) 57B0005	(2) 57B0005
*14	58F0135	58F0135	58F0135	58F0135	58F0135	58F0135	58F0135	58F0135
*15	12H0071	12H0071	12H0071	12H0071	12H0071	12H0071	12H0071	12H0071
16	13A0157	13A0156	13A0158	13A0151	13A0180	13A0183	13A0152	13A0182
*17	---	---	---	58F0112	58F0112	58F0112	58F0112	58F0112
18	12L0003	12L0003	12L0003	12L0003	12L0003	12L0003	12L0003	12L0003

LARZEP S.A.
 Avda. Urteaga, 6. 48269 MALLABIA (Vizcaya).Spain
 P.O.Box,27. 20600 Eibar (Guipúzcoa). Spain
 Tel. (+34) 943-171200 - Fax. (+34) 943-174166
 e-MAIL: hydraulic@larzep.com
www.larzep.com

LARZEP HYDRAULIC (UK) LTD
 UNIT 1A PARK ROAD INDUSTRIAL ESTATE
 CONSETT CO.DURHAM DH85PU. ENGLAND
 Tel. (+44)- 1207-582266 - Fax. (+44)- 1207-583366
 e-MAIL: enquire@larzep.co.uk
www.larzep.com