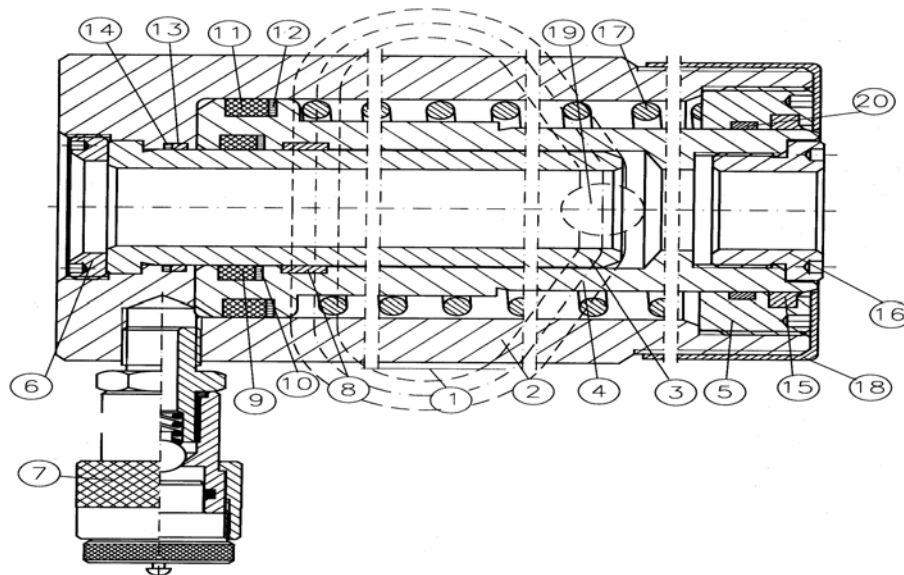


SH02205 SH02215



	SH02205	SH02215
	<i>JR.SH02205*</i>	<i>JR.SH02215*</i>
1	30A0017	30A0017
2	52N0091	52N0095
3	51C0079	51C0083
4	53O0052	53O0056
5	55M0021	55M0024
6	15O0061	15O0061
7	AZ3140	AZ3140
*8	58F0155	58F0155
*9	12B0190	12B0190
*10	57A0294	57A0294
*11	12B0175	12B0175
*12	57A0083	57A0083
*13	12A0085	12A0085
*14	57A0295	57A0295
*15	12H0071	12H0071
16	AZ0532	AZ0532
17	13D0092	13D0096
18	12L0008	12L0008
19	---	(2) 33C0004
*20	---	58F0120

ATENCIÓN: Desmontar este cilindro sin el material adecuado es peligroso debido a la fuerza del muelle

CAUTION: Trying to disassemble this cylinder without proper material is dangerous because of the strong spring.

ATTENTION: Essayer de démonter le vérin sans le matériel adéquat devient dangereux a cause de la force du ressort.

LARZEP S.A.
 Avda. Urutiaga, 6. 48269 MALLABIA (Vizcaya).Spain
 P.O.Box,27. 20600 Eibar (Guipúzcoa). Spain
 Tel. (+34) 943-171200 - Fax. (+34) 943-174166
 e-MAIL: hydraulic@larzep.com
www.larzep.com

LARZEP HYDRAULIC (UK) LTD
 UNIT 1A PARK ROAD INDUSTRIAL ESTATE
 CONSETT CO.DURHAM DH85PU. ENGLAND
 Tel. (+44)- 1207-582266 - Fax. (+44)- 1207-583366
 e-MAIL: enquire@larzep.co.uk
www.larzep.com