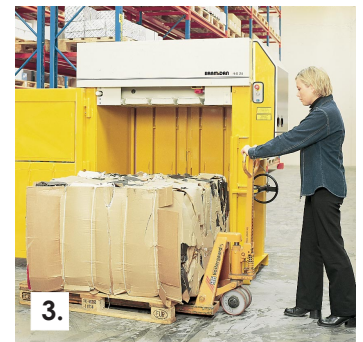


4-X 25

For larger demands

The 4-X 25 is equipped with double scissor cylinders, giving you stable compression and superior press force, together with a low overall height. Combined with a long stroke, a high bale weight can be achieved.

This bale press is designed with easy servicing in mind, for example the positioning of the hydraulic unit mounted next to the control panel on the side of the machine.



- **Noiseless**
Due to a unique hydraulic system
- **Safe and steady opening of door**
Operated by a strong threaded spindle
- **Easy installation**
Very low overall height



Technical specifications	
Press force (t)	25
Power supply	3x230/400V 50Hz 25/16A
Motor (kW)	4.0
Noise level (dB)	67
Cycle time (sec)	32
Dimensions WxDxH (mm)	1720 x 1290 x 1995
Weight (kg)	1425
Filling opening WxH (mm)	1090 x 510
Filling height (mm)	950
Chamber height (mm)	1335
Stroke (mm)	925
Bale size WxDxH (mm)	1200 x 800 x 800
Bale weight cardboard (kg)	250-300
Bale weight plastic (kg)	300-400



A threaded spindle ensures steady and safe opening of the main door.



The scissor cylinders ensure stable compression and a low overall height.