

Integrable marking machine

Marking area 120 x 40mm.

ADVANTAGES OF MARKING BY DEEP SCRIBING

Scribing creates a **highly legible** continuous line mark at low noise levels compared to other **permanent marking** technologies for metal parts (micro-percussion, stamping,...)
Compared to engraving, deep scribing is **much faster** and does **not require** any consumables.

HIGH PERFORMANCE

- Maximum depth:
 - 0.3mm in steel at 110 HB
 - 0.25mm in cast iron
- Marking speed:
 - less than 10 seconds for 19 characters of 7mm (V.I.N. marking).

SAVE TIME AND MONEY ON INTEGRATION

The independent, user-friendly **UC312** control unit (screen + internal software + keyboard) speeds programming and eliminates the need for a PC or PLC.

UTILIZATION

The **SV312** is the ideal solution for marking on metallic parts, of various shapes and states of surfaces, mainly for the following sectors:

- Automobile (V.I.N. marking, engine block, ...),
- Construction (structural iron, ...),
- Off shore (tubes, valves, joints, ...),
- Etc ...

ENVIRONMENT

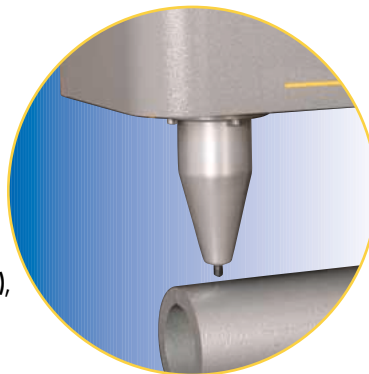
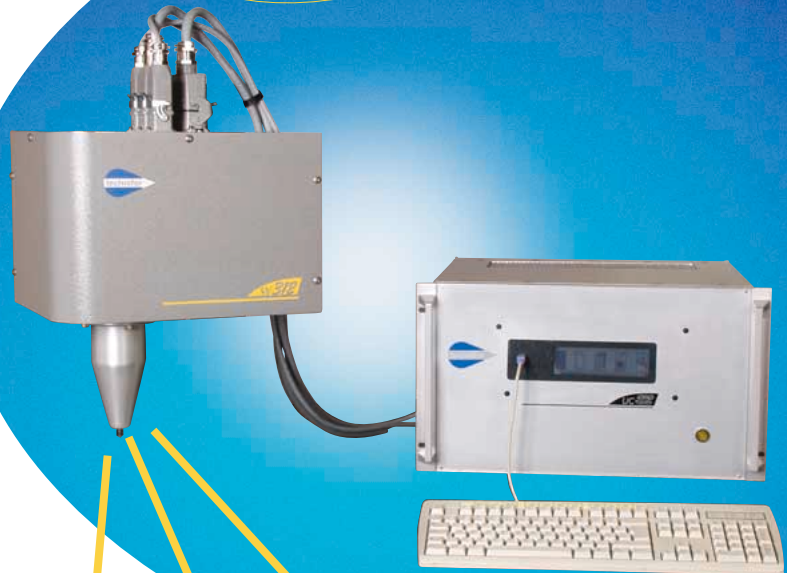
The **SV312** marking system is designed for industrial integration on assembly and automatic production lines.

FEATURES

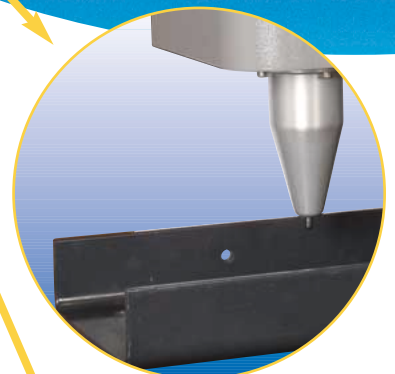
- Creation / Modification / Storage of data to mark.
- Management of the 6 input / 2 output board
- Calculation of variables: time stamps (several formats available), shift code, serial numbers.
- Management of text style:
 - choice of character font (standard, OCR, ...),
 - choice of logos,
 - compression, spacing, automatic centering,
 - linear marking, angular, radial, inclined, inverted, mirrored.
- Downloading of customized fonts and logos.

SIMPLIFIED INDUSTRIAL INTEGRATION

- **Piloting of the marking head by:**
 - Selection of files stored in the UC312's memory, by activation of inputs.
 - Control unit in autonomous operation.
 - PLC or any other information system, via RS232 connection.
- **Rapid interchangeability of the head:**
 - Mounted using mechanical fasteners.



Marks on tubes



Marks on beams



Marks on shock towers



Accessories/Adaptations:

- UC/Marking head connecting cord 20m (standard), ask us about other lengths.
- Electrical supply: 115 V AC / 230 V AC

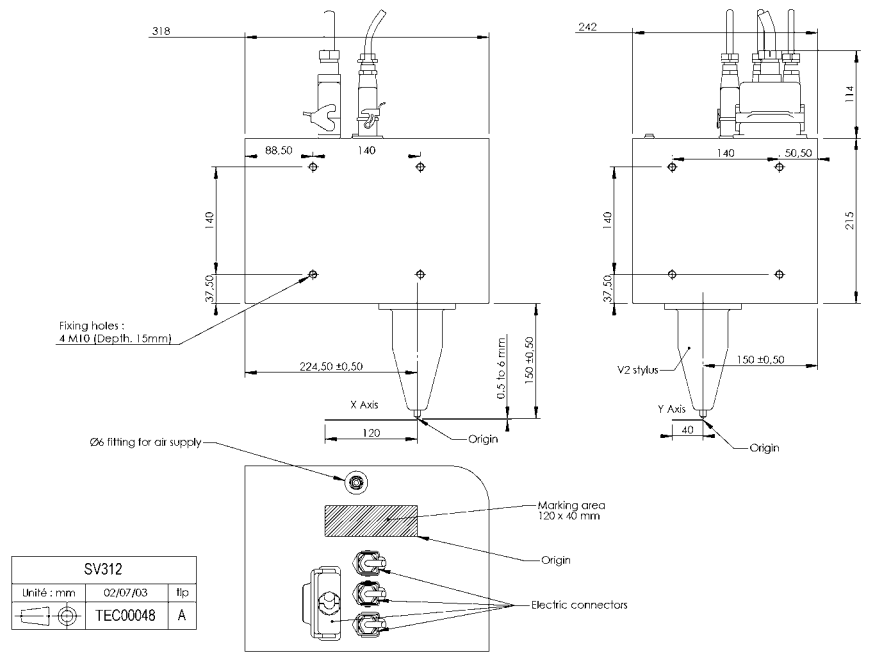
Scribing stylus:

Depending on the roughness of the surface, 2 types of points are available:

- Carbide point for rough surfaces, such as castings ($3.2 < Ra < 12.5$)
- Diamond point for machined and smooth surfaces ($Ra < 3.2$).

Marking head SV312

- Dimensions (L x l x h): 318 x 242 x 215mm. (not including stylus and connectors).
- Weight: 24 Kg.
- Air supply: working pressure from 2 to 6bars, with pneumatic connection \varnothing 6mm.
- Operating temperature: +5 to +45°C.



Options:

- Downloading of additional fonts or logos (HPGL).
- Standard marking software Windows® T101W.
- File transfer software between the UC312 and a PC.
- Reception of data via RS232 connection.

Control Unit UC312

- Dimensions (L x l x h) except connectors: case 19" 6U
- Weight: 16.5 Kg
- Electrical supply: 230 V AC \pm 10%
- Power: 1 100 VA
- Eprom flash memory for quickly updating internal software
- Data entry by:
 - External 105-key AT keyboard (included with the UC312)
 - PC with Windows® software
 - PLC via RS232 connection (DB9 connector).
 - Other information systems via RS232 connection.
 - Bar code scanner via RS232 connection (optional).

Norms:

- Directive "Machine" 89/392/CEE.
- Directive "Electromagnetic compatibility" 89/336/CEE.
- Directive low voltage "Electric devices" 73/23/CEE.
- Complies with Part 15 of the FCC rules.

- Operating temperature: +5 to +45 °C.
- Selection of files saved in memory:
 - By 105-key AT keyboard (included with the UC312).
 - By 6 I/ 2 O board (on DB25 connector).
 - By RS232 connection.
- Communication interface:
 - Start marking
 - End of cycle
 - Reset
 - Machine ready to start marking.



Technifor SA - Miribel site - F



114, quai du Rhône - F-01708 MIRIBEL Cedex
Tel +33 (0)4 78 55 85 50 - Fax +33 (0)4 78 55 85 54

E-mail : tf@technifor.com

www.technifor.com