

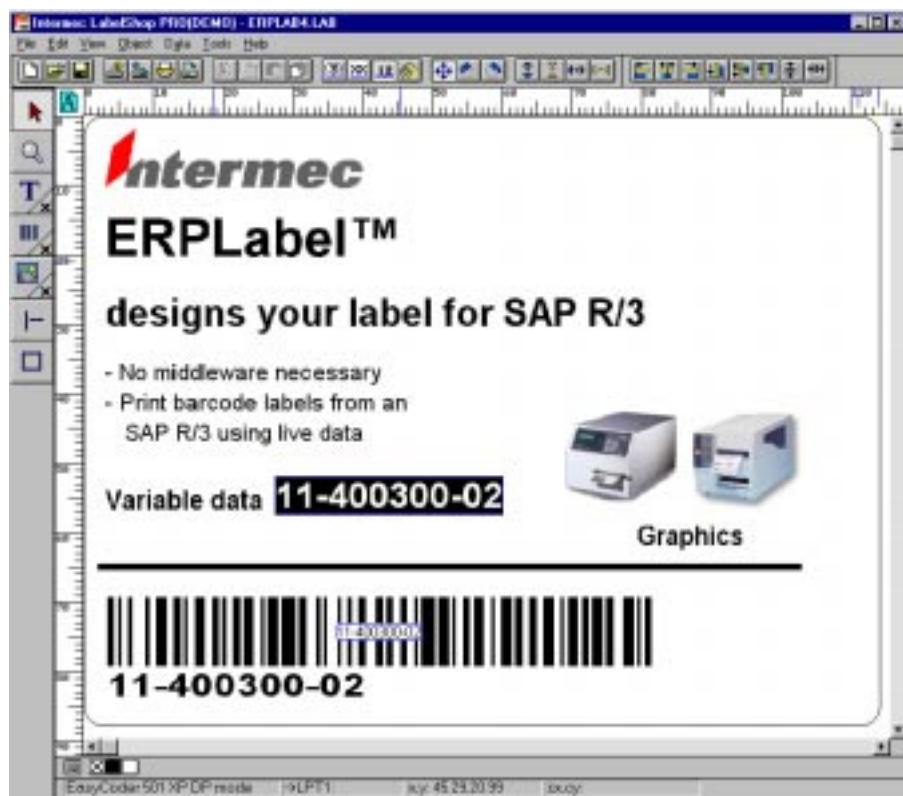
LABEL DESIGNER FOR ERP SYSTEMS

ERPLabel™

for SAP™ R/3®

Benefits:

- **“Connect and Print”**
Intermec bar code printers
directly to SAP R/3®
- **No middleware necessary**
- **No special development
required—saves time and
money**
- **Use with any R/3 system
independent of Operating
System**
- **Supports local or remote
printout**
- **Design labels with
full WYSIWYG**
- **Print text, graphics, bar
codes, lines/boxes**
- **Wide range of 1-D and
2-D bar code symbologies
is supported**
- **Approved by SAP**



ERPLabel from Intermec provides an easy way to bar code enable your SAP R/3 system.

ERPLabel supports a wide range of Intermec EasyCoder printers.

System Integrators and developers will appreciate the easy way to implement bar code printing and the extensive bar code support. This is done without learning printer command language, or making special development, or using bar code libraries or bar code fonts.

ERPLabel is “plug-in” software for Intermec’s LabelShop® PRO, that adds the interface for the R/3 system.

ERPLabel creates label files that are imported into your SAPscript®. These files can be used without any further actions or editing.

It is a simple process to create labels for R/3, with just a few steps:

1. Design the label in LabelShop and store the output file in an SAP specific file format
2. Import the file into the SAPscript report
3. Define the printer in R/3 and print on your EasyCoder printer

ERPLabel™

Bar Code Label Designer for SAP™ R/3® with Intermec EasyCoder Printers

Object Types

Text

- Fixed text fields
- Variable text fields
- Concatenated fields; multiple data consisting of variable fields and fixed data
- Selection of font; fixed data – printer font or Windows font; variable data – printer font
- Text properties; alignment, orientation, inverted text.

Bar code

- Fixed bar code fields
- Variable bar code fields
- Concatenated fields; multiple data consisting of variable fields and fixed data
- X-dimension, ratio, orientation (0/90/180/270 degrees), Check digit, Check digit type
- Human readable font: enable/disable, font selection, size, alignment, location

Supported Bar Code Symbologies

Code 39, Code 39 Full ASCII, Code 93, Code128, UCC/EAN-128, Codabar, Code 11, DUN-14/16, EAN-8, EAN-13, 2 digit supplement, 5 digit supplement, UPC-A, UPC-E, 2/5, 2/5 I, 2/5 Matrix, 2/5 Industrial, MSI Plessey, Postnet*, Code16K, Codablock A, Datamatrix*, Maxicode*, PDF417*, QR Code*.

Lines and Boxes

- Line length and thickness
- Box length and width; thickness/filling

Graphics

- Fixed graphic fields
- Graphical files in following formats are supported: bmp, dib, rie, dxf, eps, fmf, img, jpg, pcd, pcx, dcx, png, tga, wmf, wpg and Windows clipboard.

Working Models

ERPLabel can store label formats locally in the printer or in the host system.

Host Stored Label Format

- Some printers can use the host to send the complete label and data. The major advantage is that no application specific data is stored in the printer, so additional printers can be added or moved in the R/3 system without having to prepare the printer.
- True Type fonts can be used for fixed texts and is sent as graphic data.
- Fixed Graphics are sent to the printer at printout.

Printer Stored Label Format

- Can store label formats in printer for optimised throughput. Ideal when using slow communication lines.
- Graphics stored in printer
- True Type fonts can be stored in printer* for use with fixed or variable data.
- Host sends variable data only

Supported Print Methods in SAP R/3

- Local print on the application server (access methods L,C)
- Remote print via lpd host (access method U)
- Remote print over PC and SAPlpd (access method U or S)

SAP Online Support Service Listings

- OSS 137069 describes connection of EasyCoder printers with Direct Protocol and Fingerprint language.
- OSS 183777 describes connection of EasyCoder printers with IPL language.
- OSS 135894 provides general information about upload method for bar code printing in SAP R/3.

Supported Printers

EasyCoder 201, 301**, 401, 501, 501XP, 601, 601XP; 3240, 3400, 3440, 3600, 4400, 4420, 4440, 4830, 7421.

Systems Requirements

ERPLabel

- PC running Windows™ 95, Windows 98 or Windows NT 4.0
- Hardware requirements – standard for respective operating system
- Intermec LabelShop® v.4.21C or higher

SAP R/3

- Release 3.0A on any operating system

* Printer model dependent

** Graphics supported in printer stored label format

R/3 and SAPscript are registered trademarks of SAP AG.

Windows is a registered trademark of Microsoft Corporation.

LabelShop is a registered trademark of Intermec Technologies Corporation.

**Where
Information
Gets Down
To Business™**

North America • 6001 36th Avenue West • P.O. Box 4280 • Everett, Washington 98203-9280 • 1 (800) 347-2636 tel • 1 (319) 369-3324 fax • Norand Mobile Systems Division • 550 2nd Street S.E. • Cedar Rapids, Iowa 52401 • 1 (800) 452-2757 tel • 1 (319) 369-3453 fax • Label Products: 1 (800) 227-9947 tel • 1 (513) 874-8487 fax

Europe/Middle East/Africa • **Headquarters** • Sovereign House • Vastern Road • Reading, RG1 8BT • United Kingdom • +44-118-987-9400 tel • +44-118-987-9401 fax • **France** • +33-1-30-15-25-35 tel • +33-1-34-80-14-33 fax • **Germany** • +49-211-536010 tel • +49-211-5360150 fax • **Italy** • +39-02-662-405 tel • +39-02-662-40558 fax • **Nordic Countries - Sweden** • +46 8 622 06 60 tel • +46 8 622 06 61 fax • **Denmark** • +45 48 166 166 tel • +45 48 166 167 fax • **Norway** • +47 67 91 17 10 tel • +47 67 91 17 11 fax • **Finland** • +358 9 52 37 21 tel • +358 9 52 92 24 fax • **Spain** • +34-91-383-2252 tel • +34-91-383-2247 fax • **United Kingdom** • +44-118-923-0800 tel • +44-118-923-0801 fax
For all other countries in Europe, Middle East, and Africa, Intermec Technologies Corporation has sales and service partners. For more information on a partner near you, please contact our European Headquarters listed above.

Asia Pacific/Latin America • 6001 36th Avenue West • P.O. Box 4280 • Everett, Washington 98203-9280 • 1 (800) 347-2636 tel • 1 (319) 369-3324 fax • Label Products: 1 (800) 227-9947 tel • 1 (513) 874-8487 fax

World-Wide Fax Document Retrieval Service • 1 (650) 637-2603 tel • 1 (800) 755-5505 (North America Only)

Internet • www.intermec.com **E-mail** • info@intermec.com

Copyright © 1999 Intermec Technologies Corp. All rights reserved. All trademarks are the property of their respective owners. Contents subject to change. 99.11

