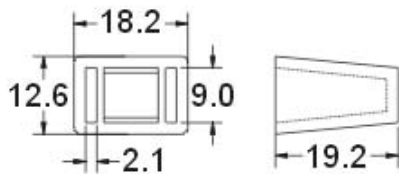
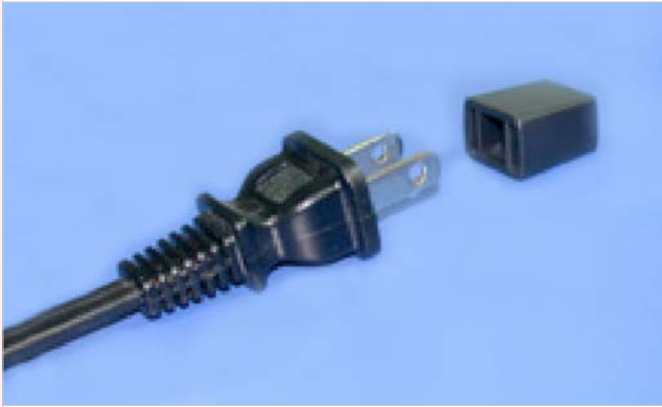




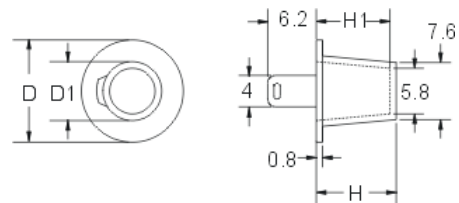
## Protector de clavijas



Material: PE (polietileno).

Ref.	Dimensiones mm.	Para clavija	
<b>PR-2</b>	Ver figura	Standard	100

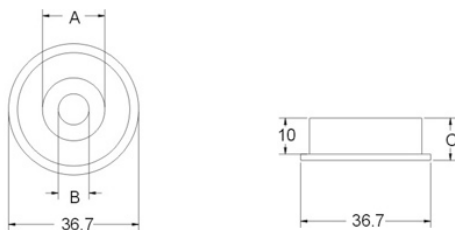
## Capuchón protector de tornillo



Material: PE (polietileno).

Ref.	Dimensiones mm.				
	D	D1	H	H1	
<b>SCP-0709</b>	13	7,5	10,2	9,3	100

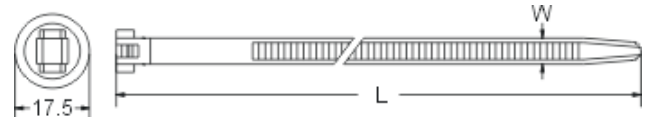
## Arandela cabezal



Material: PE (polietileno).

Ref.	Dimensiones mm.			
	A	B	C	
<b>HBW-1808</b>	18	8,6	11,7	100

## Brida para chasis



Material: Nylon 66 homologado 94V-2.

Ref.	Dimensiones mm.		Ø Máx. Uso mm.	
	L	A		
<b>KFC-300</b>	304	3,2	85	100





## Brida especial para tubos de aire acondicionado



Material: PE (polietileno).

Ref.	Dimensiones mm.		Ø orificio mm.	
	L	W		
<b>AT-250</b>	235	20	2,8	100
<b>AT-290</b>	275	20	2,8	100

