

ClorTec™

On-Site Sodium Hypochlorite Generation Systems

MCT Series 12 to 36 lb/day (5.4 to 16.3 kg/day)

On-site sodium hypochlorite generation is unparalleled in safety and cost efficiency. ClorTec™ on-site systems generate 0.8% sodium hypochlorite by combining three common consumables:

salt, water and electricity



(Salt + Water + Power = Sodium Hypochlorite + Hydrogen)

ClorTec MCT systems easily control sodium hypochlorite production and provide a powerful disinfection method for any application. MCT systems meet requirements for 12 to 36 lb/day (5.4 to 16.3 kg/day) chlorine equivalent. Applications include potable water, wastewater, odor and corrosion control, cooling towers, oxidation and swimming pool disinfection.

The ClorTec MCT systems are supplied in a factory tested integrated skid mounted configuration. This design allows for ease in serviceability and expansion potential.



Features:

- Integral skid mounted design
- High efficiency electrolytic cell(s)
- Integrated control panel/power supply
- On-board water softener
- Brine generator
- Integrated brine proportioning pump
- Product storage tank
- Metering pump
- Ultrasonic level control
- Hydrogen dilution blower
- On-board water chiller or heater (optional)

Benefits:

- New cell design delivers 20% reduction in consumable operating cost
- On-demand sodium hypochlorite production
- No handling or transportation of hazardous materials
- Exempt from Process Safety Management
- Exempt from Risk Management Planning
- Superior Warranty
- Easy operation
- Minimizes disinfection by-products
- NSF 61 certified
- Hydrogen dilution blower safely removes and disperses H₂ gas, ensuring safe hypochlorite generation
- Optional water chiller reduces operating costs by increasing efficiency of sodium hypochlorite conversion



Severn Trent Services

2660 Columbia Street

Torrance, CA 90503

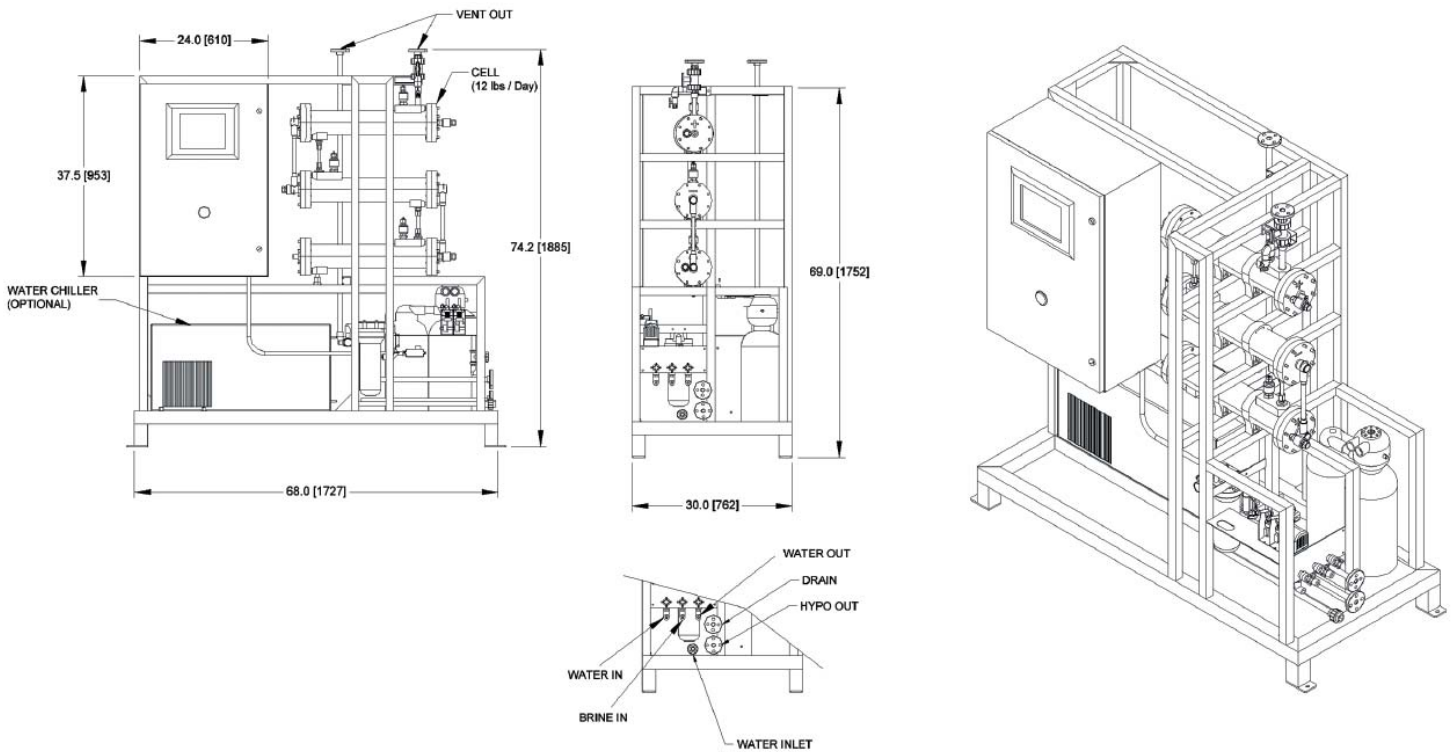
Tel 310 618 9700

Toll Free 800 524 6542

Fax 310 618 1384

info@severntrentservices.com

www.severntrentservices.com



MCT SERIES SYSTEM SPECIFICATIONS

Capacities: 12-36 lbs/day (5.4-16.3 kg/day). Free available chlorine.

Control: Automatic batch, regulated by storage tank status.

Hypochlorite: 0.8% ± 0.05%.

Raw Materials: Per pound of chlorine produced; 3 lbs. (1.4 kg) salt, 2 kWh electrical energy, and 15 gal. (57 L) water.

Water Supply: Potable water @20-50 psi (1.4-3.5 bar), temperature range 65°F-80°F (18°C-27°C).

Salt Quality: 99.7% pure dry weight Morton Crystal or equivalent.

Electrical Power:

- Rectifier: 208, 240 VAC 1 Ø
- Control panel: 208, 240 VAC 1 Ø
- (Other voltages available as an option)

Operator Interface:

- 6 Inch monochromatic touch screen.
- Optional: Color LCD touch screen industrial computer with data logging and communications capability.

Control Panel: Grey polyester coated NEMA 12 welded steel enclosure.

Programmable Logic Controller: Expandable from 8 to 32 discrete I/O channels, 4 to 16 analog inputs and 2 to 8 analog outputs.

Full custom integration available

Brine Generator: HDPE or FRP tank to store minimum of 1 weeks supply (lb/day x 3 x 7 days minimum).

SODIUM HYPOCHLORITE TANK

Material: HDXLPE or equivalent.

Size: One day storage recommended (lb/day x 15 gal.).

Level Control: Ultrasonic or mechanical level sensor in tank controls start/stop function of system.

Hydrogen Vent: Waste hydrogen is exhausted to atmosphere by an active air dilution blower system.

Optional Water Chiller: Air cooled design. Classified by Underwriters Laboratories in accordance with ANSI/NSF 61, 1997b.

Optional Water Heater: UL® and CSA recognized and listed unitized assembly.

Model	Cells Configuration	Output		Flow		Salt		Typical Circuit Capacity* ampere	Dry Shipping Weight
		lb/day	kg/day	gal/day	L/day	lb/day	kg/day		
MCT-12	1 x 12	12	5.4	180	681	36	16.3	30	665 lbs.
MCT-24	2 x 12	24	10.9	360	1363	72	32.7	40	680 lbs.
MCT-36	3 x 12	36	16.3	538.0	2044	108	50	50	695 lbs.

*Max @ 240VAC 1Ø, standard MCT system.

Use of the ETV Name or Logo does not imply approval or certification of this product nor does it make any explicit or implied warranties or guarantees as to product performance. UL® is a registered trademark of the Underwriter's Laboratories, Inc.