

ClorTec™

On-Site Sodium Hypochlorite Generation Systems

CT Series Midsize - 75 to 300 lb/day (34 to 136 kg/day)

On-site sodium hypochlorite generation is unparalleled in safety and cost efficiency. ClorTec™ on-site systems generate 0.8% sodium hypochlorite by combining three common consumables:

salt, water and electricity



(Salt + Water + Power = Sodium Hypochlorite + Hydrogen)

ClorTec CT systems easily control sodium hypochlorite production and provide a powerful disinfection method for any application. CT systems meet requirements for 75 to 300 lb/day (34 to 136 kg/day) chlorine equivalent. Applications include potable water, wastewater, odor and corrosion control, cooling towers, oxidation and swimming pool disinfection.

The ClorTec CT systems are component based and consist of a modular configuration. This design allows for ease in serviceability and expansion potential. The primary components may be arranged to optimize available space and systems may be custom designed for unique applications.

Features:

- ◆ Electrolytic cell(s)
- ◆ Rack mount
- ◆ Power supply/rectifier
- ◆ Control panel/PLC
- ◆ Water softener
- ◆ Brine tank
- ◆ Brine proportioning pump
- ◆ Product day tank
- ◆ Metering pump
- ◆ Ultrasonic level control
- ◆ Hydrogen dilution blower
- ◆ Intrinsically safe multiple safety system
- ◆ Optional water chiller and heater



Benefits:

- ◆ New cell design delivers 20% reduction in consumable operating cost
- ◆ On-demand sodium hypochlorite production
- ◆ No handling or transportation of hazardous materials
- ◆ Exempt from Process Safety Management
- ◆ Exempt from Risk Management Planning
- ◆ Superior Warranty
- ◆ Easy Operation
- ◆ Minimizes disinfection by-products
- ◆ NSF 61 Certified



Severn Trent Services

2660 Columbia Street

Torrance, CA 90503

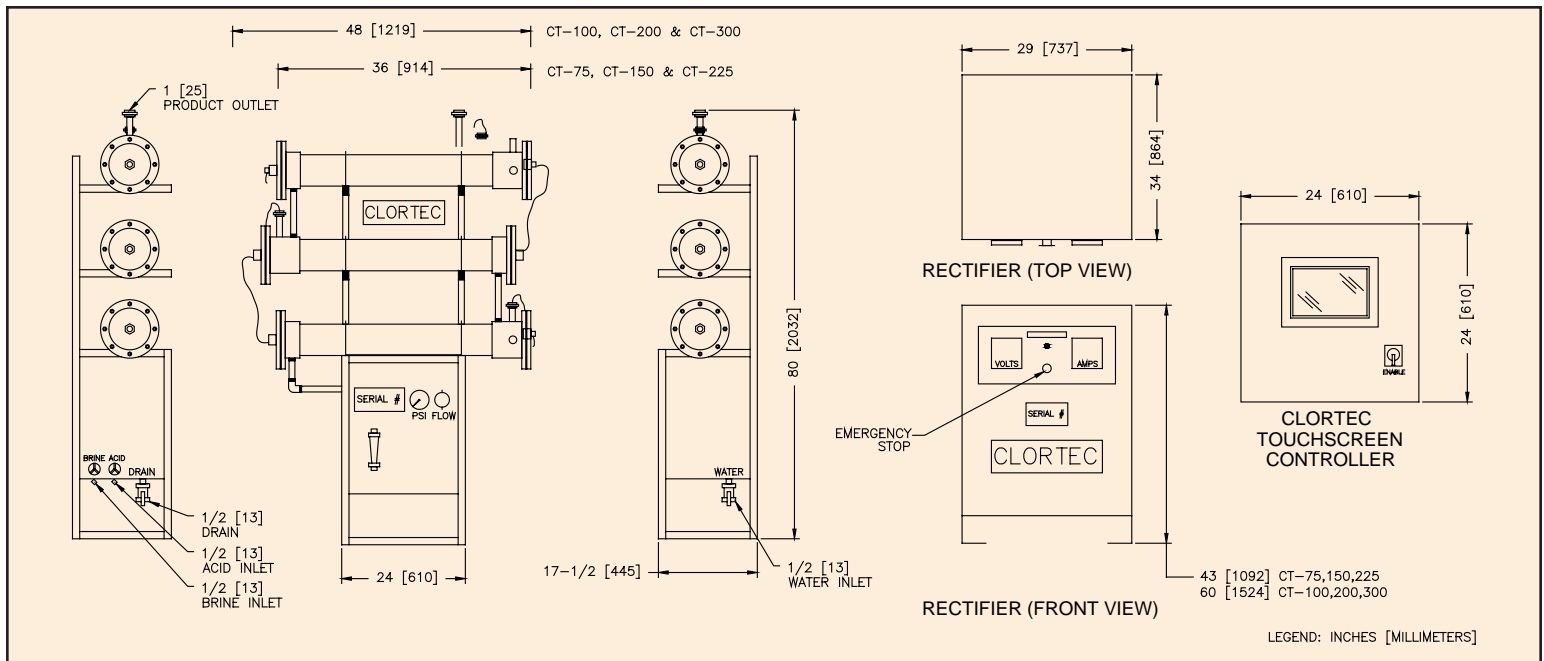
Tel 310 618 9700

Toll Free 800 524 6542

Fax 310 618 1384

info@severntrentservices.com

www.severntrentservices.com



CLORTEC: CT SERIES SYSTEM SPECIFICATIONS

Capacities: 75-300 lb/day (34-136 kg/day). Free available chlorine.

Control: Automatic batch, regulated by storage tank status.

Hypochlorite: 0.8% ± 0.05%.

Raw Materials: Per pound of chlorine produced 3 lbs. salt, 2 kwh (DC), 15 gal. (57 L) water.

Water Supply: Potable water @20-50 psi (1.4-3.5 bar) temperature range 65°F-80°F (18°C-27°C).

Salt Quality: 99.7% pure dry weight Morton White Crystal or equivalent.

Electrical Power: 480 VAC 3 Ø, 60 Hz to rectifier, 208-240 VAC 1 Ø, 60 Hz to controls. (other voltages available as an option)

Control Panel: Grey polyester coated NEMA 12 welded steel enclosure

Operator Interface:

Standard: LCD touch screen

Optional: Color LCD touchscreen industrial computer with data logging and communications capability.

Programmable Logic Controller:

Expandable from 8 to 32 discrete I/O channels, 4 to 16 analog inputs and 2 to 8 analog outputs.

Full custom integration available

Salt Dissolver: HDPE or FRP tank to store minimum of 1 weeks salt supply. (lb/day x 3 x 7 days minimum.)

SODIUM HYPOCHLORITE TANK

Material: HDXLPE or equivalent

Size: One days storage recommended (lb/day x 15 gal).

Level Control: Ultrasonic or mechanical level sensor in tank controls start/stop function of system.

Hydrogen Vent: Waste hydrogen is vented to atmosphere by an active air dilution blower system.

Optional Water Chiller: Air cooled design. Classified by Underwriters Laboratories in accordance with ANSI/NSF 61, 1997b.

Optional Water Heater: UL® and CSA recognized and listed unitized assembly.

Model	Cell Configuration	Output		Flow		Water		Salt		Power DC/kWh/day	AC Amp 480 V 3 Ø Draw	Circuit Capacity
		lb/day	kg/day	gal/hr	L/hr	gal/day	L/day	lb/day	kg/day			
CT-75	1 x 75	75	34	47	177	1,125	4,258	225	102	150	15	20
CT-100	1 x 100	100	45	63	237	1,500	5,676	300	136	200	20	30
CT-150	2 x 75	150	68	94	355	2,250	8,516	450	204	300	30	40
CT-200	2 x 100	200	91	125	473	3,000	11,355	600	272	400	40	60
CT-225	3 x 75	225	102	141	532	3,375	12,774	675	306	450	45	70
CT-300	3 x 100	300	136	188	710	4,500	17,033	900	408	600	60	90

Use of the ETV Name or Logo does not imply approval or certification of this product nor does it make any explicit or implied warranties or guarantees as to product performance.

500.0020.12 05/05