

ClorTec™

Skid Mounted On-Site Sodium Hypochlorite Generation Systems

Midsize systems for 75 to 300 lb/day (34 to 136 kg/day)

Severn Trent Services offers the ClorTec™ On-site Hypochlorite Generating Systems, that easily produce 0.8% sodium hypochlorite by combining three common consumables: salt, water and electricity, to provide a powerful disinfection method for any application; food and beverage, potable water, wastewater, odor and corrosion control, cooling towers, oxidation and swimming pool disinfection.

The ClorTec systems are skid mounted and consist of electrolytic cell(s), power supply/rectifier, control panel/PLC, water softener, brine proportioning pump, hydrogen dilution blower and an optional water chiller/heater, all in one compact unit design conducive to easy installation and start-up. The simple-to-install skid-mounted systems can be fully operational and generating hypochlorite in less than 24 hours.

Features:

- ◆ Compact, skid-mounted system
- ◆ Hypochlorite produced on-site, on demand
- ◆ Superior Warranty
- ◆ NSF 61, ETV certification
- ◆ Eliminates need to store hazardous chemicals onsite
- ◆ Eliminates handling and transportation of hazardous materials



Benefits:

- ◆ Eliminates dependence on chemical suppliers
- ◆ Easy to install and operate
- ◆ Reduced disinfection by-product formation
- ◆ Improved water quality
- ◆ On-demand sodium hypochlorite production
- ◆ Reduced maintenance
- ◆ Exempt from Process Safety Management
- ◆ Exempt from Risk Management Planning



Severn Trent Services

2660 Columbia Street

Torrance, CA 90503

Tel 310 618 9700

Toll Free 800 524 6542

Fax 310 618 1384

info@severntrentservices.com

www.severntrentservices.com

SYSTEM SPECIFICATIONS

Capacities: 75-300 lb/day (34-136 kg/day). Free available chlorine.

Control: Automatic batch, regulated by storage tank status.

Hypochlorite: 0.8% ± 0.05%.

Raw Materials: Per pound of chlorine produced 3 lbs. salt, 2 kWh (DC), 15 gal. (57 L) water.

Water Supply: Potable water @20-50 psi (1.4-3.5 bar) temperature range 65°F-80°F (18°C-27°C).

Salt Quality: 99.7% pure dry weight Morton White Crystal or equivalent.

Electrical Power: 480 VAC 3 Ø, 60 Hz to rectifier, 240 VAC 1 Ø phase 60 Hz to controls. (Other voltages available as an option)

Control Panel: Grey polyester coated NEMA 12 welded steel enclosure.

Operator Interface: Standard: LCD touchscreen

Optional: Color LCD touchscreen industrial computer with data logging and communications capability.

Programmable Logic Controller: Expandable from 8 to 32 discrete I/O channels, 4 to 16 analog inputs and 2 to 8 analog outputs.

Full custom integration available.

Salt Dissolver: HDPE or FRP tank to store minimum of 1 weeks salt supply. (lb/day x 3 x 7 days min).

SODIUM HYPOCHLORITE TANK

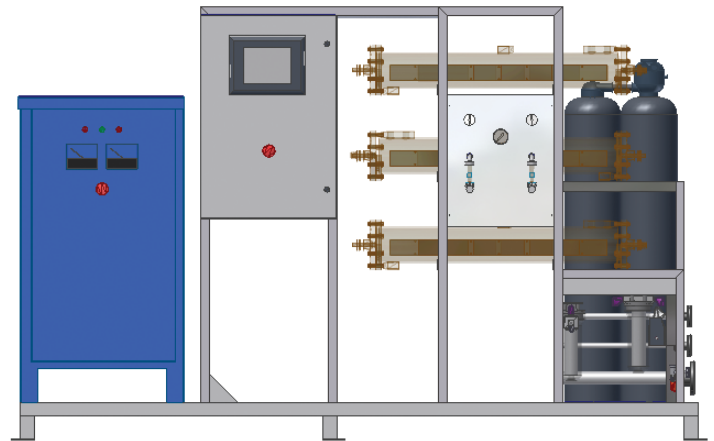
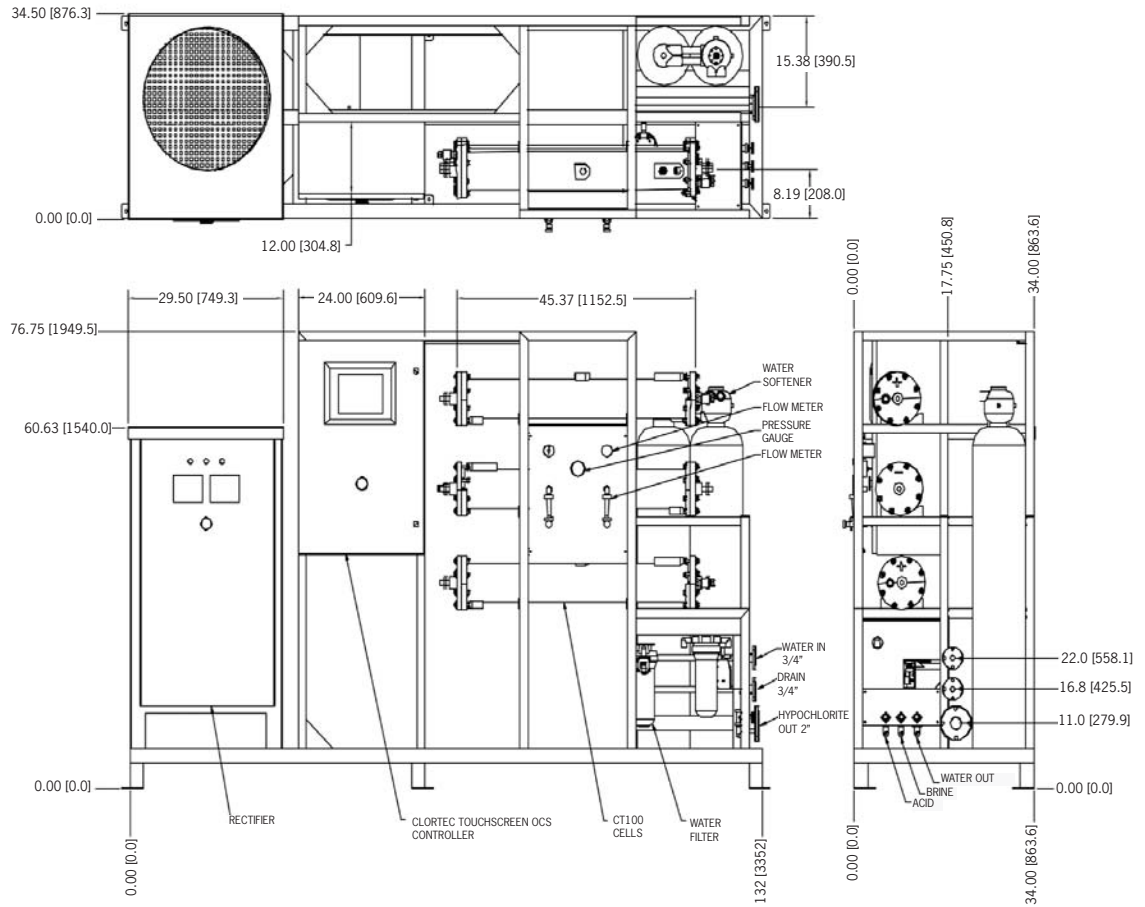
Material: HDXLPE or equivalent
Size: Two days storage recommended (lb/day x 15 gal x 2)

Level Control: Ultrasonic or Mechanical level sensor in tank controls start/stop function of system.

Hydrogen Vent: Waste hydrogen is vented to atmosphere by an active air dilution blower system.

Optional Water Chiller: Air cooled design. Classified by Underwriters Laboratories in accordance with ANSI/NSF 61, 1997b.

Optional Water Heater: UL® and CSA recognized and listed unitized assembly.



Model	Cell Configuration	Output		Flow		Water		Salt		Power DC/kWh/day	AC Amp 480 V 3 Ø Draw	Circuit Capacity
		lb/day	kg/day	gal/hr	L/hr	gal/day	L/day	lb/day	kg/day			
CT-75	1 x 75	75	34	47	177	1,125	4,258	225	102	150	15	20
CT-100	1 x 100	100	45	63	237	1,500	5,676	300	136	200	20	30
CT-150	2 x 75	150	68	94	355	2,250	8,516	450	204	300	30	40
CT-200	2 x 100	200	91	125	473	3,000	11,355	600	272	400	40	60
CT-225	3 x 75	225	102	141	532	3,375	12,774	675	306	450	45	70
CT-300	3 x 100	300	136	188	710	4,500	17,033	900	408	600	60	90

* Ready for use containerized packages available.

Use of the ETV Name or Logo does not imply approval or certification of this product nor does it make any explicit or implied warranties or guarantees as to product performance.

500.0025.6 05/05