

# **EDNS2000**

## **Digital Video Recorder**

**ernitec**

The EDNS2000 provides very high quality video recording and synchronised voice recording.

With 4/8/16 camera inputs and 3 monitor outputs it can be installed in most applications requiring Digital video recording. It is perfect as a direct replacement in installations with Multiplexer and Timelaps tape recorders.



Existing cameras, Monitors and cables can be re-used. Simply install the new DVR, connect the video cables and power-up the unit. You have now upgraded your installation to a complete high quality digital video recording system. There is no longer any need to change tapes every day.

The DVR presents the latest technology within embedded DVR solutions, using Linux software as a platform, providing stable and long time operation.

The high video quality makes it a very suitable high security application within the industry, military, prisons, banks, or wherever the need for high definition and superior image quality is required for further investigation.

By use of MPEG4 hardware compression, it is possible to record up to 100 images per second and with resolutions from 352x288 up to 720x576.

We provide storage solutions for days or month, via built hard disc. The digital system ensures that the recorded video is safely stored and that it can be retrieved quickly whenever needed.

The unit displays live and recorded video information on a standard CCTV monitor or VGA Monitor. An extra spot Monitor is available for display of all connected cameras in a sequence.

### **Easy Operation via Front Panel**



control.

The various buttons on the front panel provide easy control of most DVR operations, such as camera selection, screen mode selection, search and pan-tilt-zoom



Various LED indicators show the status of power, network, sensor and recording.

### **Remote control**

All DVRs include a remote control unit as standard. By using IR technology it is possible to operate all the DVR functions via the remote control unit. It is also possible to control several DVR units from one single remote.



### **Jog wheel & replay buttons**

The DVR includes a super smart JOG wheel for easy replay of interesting scenes, normally only seen in top range of Broadcast equipment. With the inner JOG you can search back and forth, picture for picture. With the outer wheel you can replay recordings with up to 32x the recorded speed.

Simple replay buttons are placed below the JOG wheel for start, stop, forward, backward etc.

### **Activity Detection**

More efficient recording can be obtained by the use of activity detection. For each camera a special mask can be set-up for the desired area of motion to be recorded. Using activity detection requires less hard disk space, without compromising the image recording.

### **Smart Search Functions**

Search the recorded images by date, time and camera sensor event.

### **CD-RW for File Back-up**

The system provides the possibility of copying suspicious events to an internal CD-RW for long-term storage.



### Alarm Recording

It is possible to connect 4 alarm sensors. When a sensor is selected for a camera, the connected camera will immediately capture any motion detected by the sensor. There are 2 control outputs. Each output can be automatically triggered by any alarm.

### Network Solutions

The DVR may be used in local or wide area networks for remote surveillance. Any number of units may be connected to a 10/100BaseT network Hub, providing multiple connectivity to multiple recorders, vast remote locations and multi-channels all from multiple review stations, installed with RemoteAgent PC software.

### Auto-Rebooting

After the power supply is recovered from the power failure, the DVR automatically reboots and continues recording normally.

### Easier Control at the On-Site & Remote-Site

The DVR supports on-site and remote control of cameras equipped with PTZ controller through RS485 using RemoteAgent networking software.

### Sound Recording

The DVR has a built-in 4 channel sound card for the recording of synchronised audio.

### Proprietary Compression Technology

Proprietary Enhanced MPEG 4 video compression provides the industry's most powerful compression of video images for fast processing speed and high image resolution.

High compression efficiency achieved allows fast network transmission of recorded image files over a variety of network settings for live viewing, remote playback or remote file copy.

### Prevents Alteration of Images by Encryption and Password

Alteration and forgery of images is impossible. Users can only view images in the Viewer program, because of the powerful encryption.

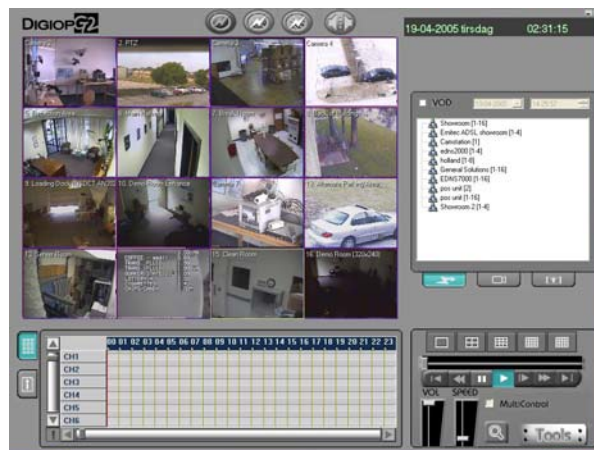
Image files recorded with Ernitec DVR can be provided as legal and forensic evidence.

### Remote Live View, Playback, File Copy

The EDNS2000 DVR comes with very advanced network software as standard. The software is named RemoteAgent and with this software it is possible to have remote live view, playback and file copy. It is even possible to receive video from 16 remote sites simultaneously.

The software package provides features like:

- Live Monitoring from Remote DVR
- V.O.D (Playback of Recorded Data of Remote DVR)
- Image File Copy from Remote DVR for Archival
- Remote Control of P/T/Z for connected DVR
- Remote Sensor Alarm (Abnormal Shutdown)
- Technical alarms
- Screen Display: 1,4,9,16 ch
- RemoteAgent PC software – type: EDNS 16NET



### Order Codes

Basic models:

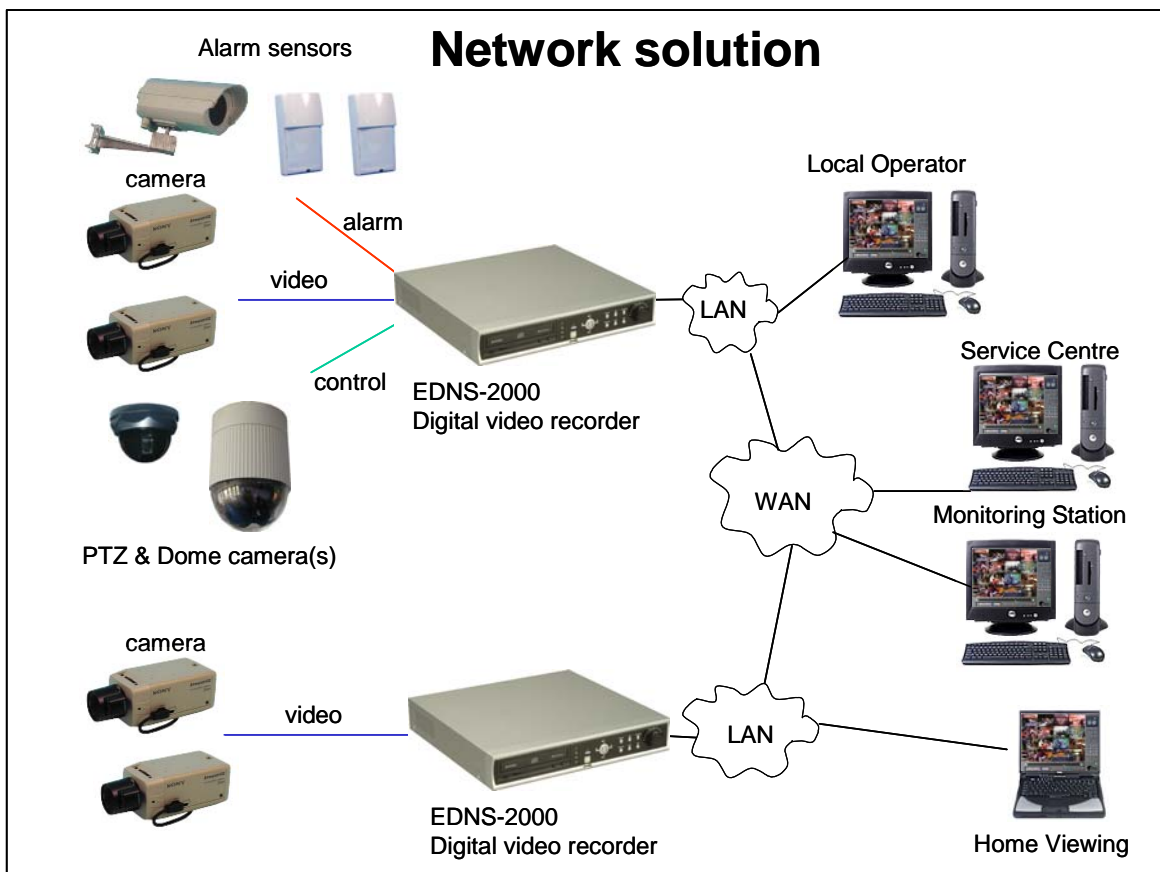
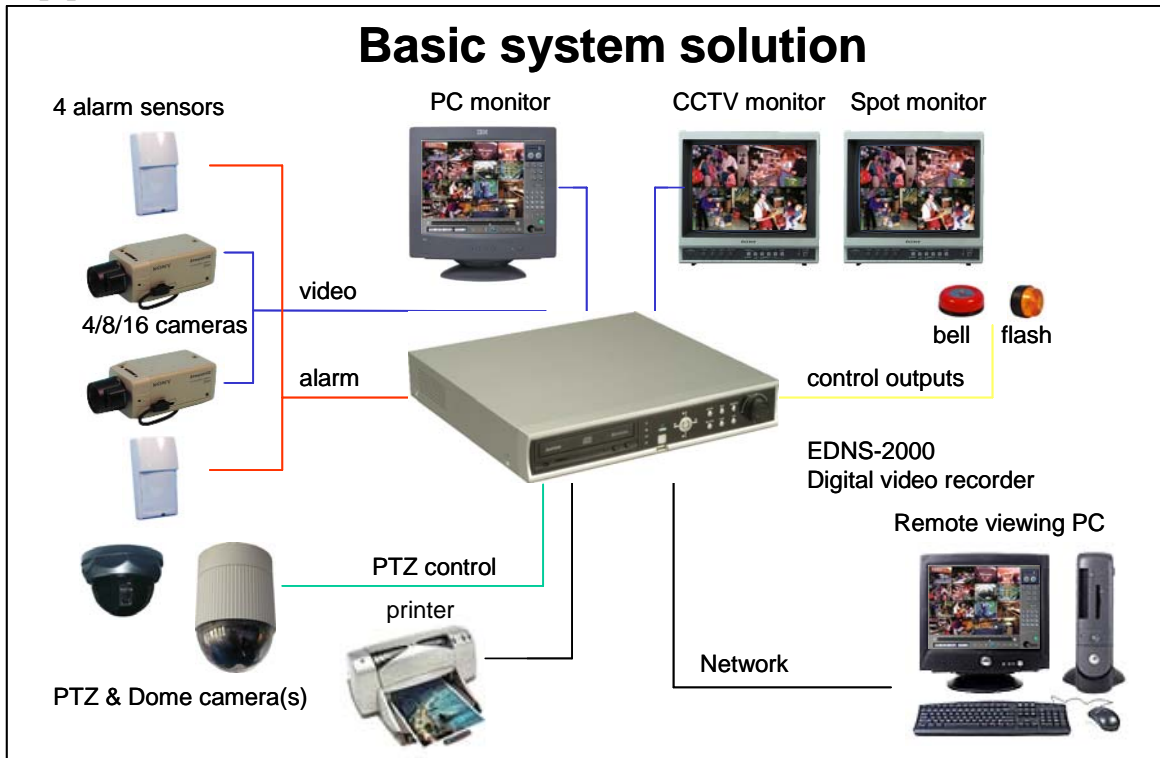
- EDNS2000-4EPC
- EDNS2000-8EPC
- EDNS2000-16EPC

The hard disc capacity changes regularly, so please contact your Ernitec sales person for the latest sizes available.

Accessories:

- EDNSPTZ: RS232/RS485 converter

# Applications



# Specifications

		EDNS2000-4EPC	EDNS2000-8EPC	EDNS2000-16EPC
<b>H/W</b>	<b>CPU</b>	Geode x86 266MHz		
	<b>RAM</b>	128MB		
	<b>HDD</b>	Max. 3HDD (2HDD + CD-RW)		
<b>OS</b>		Embedded Linux		
<b>Video Input</b>		4ch	8ch	16ch
<b>Loop-OUT</b>		4ch	None	
<b>Video Mode</b>		PAL / NTSC Selectable		
<b>Display Speed (PAL/ NTSC)</b>		100/120fps	200/240fps	400/480fps
<b>Screen Modes for Live Display</b>		4/1/PIP	9/4/1/PIP	16/10/9/4/1/PIP
<b>Recording speed (PAL/ NTSC)</b>	<b>352x288/240</b>	120/100fps (with Playback: 60/50fps)		
	<b>704x288/240</b>	60/50fps (with Playback: 30/25fps)		
	<b>720x576/480</b>	30/25fps (with Playback: 15/12.5fps)		
<b>Monitor output</b>		Main monitor output (Composite & S-Video, VGA) / Spot output (Composite)		
<b>Recording Resolution</b>		PAL: 352x288, 704x288, 720x576 NTSC: 352x240, 704x240, 704x480		
<b>Byte Size per Image (Standard Quality)</b>		3~5Kbyte @ PAL: 352x288, (NTSC: 352x240) 5~10Kbyte @ PAL: 704x288 (NTSC: 704x240) 10~16Kbyte @ PAL: 720x576 (NTSC: 704x480)		
<b>Compression method</b>		MPEG4		
<b>Recording Modes</b>		Continuous, Motion, Alarm, Pre-alarm		
<b>Recording schedule</b>		Yes, schedule per camera		
<b>Motion Detection</b>		Yes, per camera		
<b>Audio Input/ Output</b>		4 input / 1 output (ADPCM)		
<b>Sensor/ Alarm</b>		4 Dry Contact Input / 2 Relay Output		
<b>P/T/Z control and port</b>		PAN/TILT/ZOOM/FOCUS/IRIS, RS-485 port		
<b>LAN</b>		10/100 Ethernet		
<b>Transmission Speed and No. of Connection</b>		Same as Recording Speed for each Channel Max 16 ch Connection (16 video transmissions at the same time)		
<b>Remote Transmission</b>		Multi-to-Multi connection, Multi-channel transmission Live Viewing, Remote Playback and File Backup at the same time (Triplex-on-Remote)		
<b>Remote Control</b>		Remote PAN Tilt ZOOM/FOCUS /IRIS control		
<b>Remote management</b>		Remote Software Upgrade & Remote Software Upgrade		
<b>CD-RW</b>		Internal CD-RW (Option)		
<b>External Backup Device</b>		Support (Front USB Ports)		
<b>System Operation</b>		Button on Front panel / IR Remote Controller / Jog / Shuttle		
<b>Storage Temperature and Humidity</b>		-20~60 degrees Celsius / 20~95%RH		
<b>Operating Temperature and Humidity</b>		5~40 degrees Celsius / 20~80%RH		
<b>Power</b>		Single Phase AC115~230V, 50/60Hz (Select Switch)		
<b>Dimension and Weight</b>		380(W) x 66(H) x 370(D) mm, 6Kg		
<b>Remote S/W</b>		RemoteAgent S/W (16ch)		
<b>Standard Authentication</b>		FCC, CULUS, CE (EMC/LVD) – CLASS A		
* The system specification can be modified without notification.		Standard spec. based on Oct, 20th. 2004		



THE ONE TO WATCH

#### Denmark Head Office

Ernitec A/S  
Hørkær 24  
2730 Herlev  
Denmark  
Phone: +45 44 50 33 00  
Fax: +45 44 50 33 33  
ernitec@ernitec.dk  
www.ernitec.com

#### French Branch Office

Ernitec France  
N° 29 Parc Club du  
Millenaire  
1025 Rue Henri Becquerel  
34036 Montpellier cedex 1  
France  
Phone: 04 67 15 10 15  
Fax: 04 67 64 01 81  
ernitec@ernitec.fr  
www.ernitec.com

#### German Branch Office

Ernitec GmbH  
Stormarring 28  
22145 Stapelfeld  
Germany  
Phone: 040 67 56 25 0  
Fax: 040 67 56 25 25  
ernitec@aol.com  
www.ernitec.com

#### UK Branch Office

Ernitec UK  
Columbia House  
Columbia Drive  
Worthing  
West Sussex BN13 3HD  
England  
Phone: 01903 26 31 25  
Fax: 01903 26 31 26  
sally@ernitec.co.uk  
www.ernitec.com

#### Middle East Office

Ernitec ME  
Hamra - Makdesi Street  
Younis Center - 5th floor  
Office no. 503  
P.O.Box: 113/5721  
Beirut  
Lebanon  
Phone: +961 1 751 796  
Fax: +961 1 751 795  
malek\_kabrit@ernitecme.com  
www.ernitecme.com