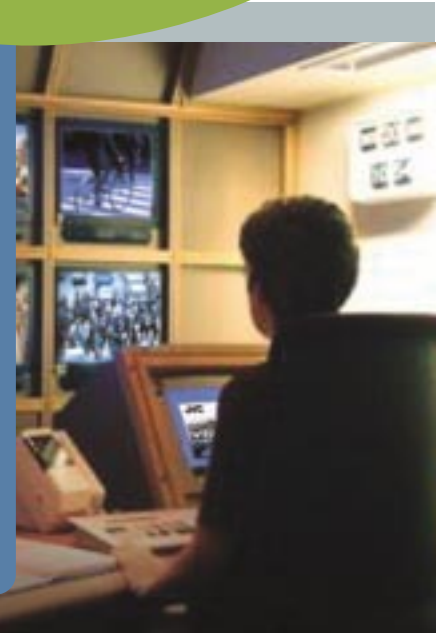


Get free trial version today!

<http://www.jvc-victor.co.jp/english/pro/vnetworks/index-e.html>



VN-S400U Multi-Viewer Software

Versatile Multi-Viewer Application with Powered-Up Security Functions and Enhanced Systems Flexibility Lets You Get the Most Out of Your Network Camera Systems.

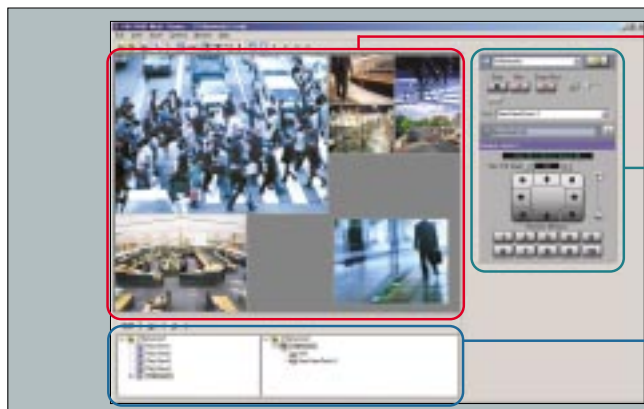
Major Features



- Up to 256-Unit Multi-Camera Display with Sequential Switching
- User-Friendly Interface with Easy Point-and-Click Operation
- Versatile Recording & Playback Functions including Timer Recording
- External Device Control including Analog CCTV Camera Control
- Full Support for JVC V.NETWORKS Systems

More Flexible, More Reliable, and Easier to Use

● VN-S400U



● View window area

Displays camera images in up to 16 windows. JPEG or MPEG images are displayed.

● Controller area

Activates recording and snapshot functions. Also lets you adjust settings and control operations on connected devices.

● Management Explorer

Convenient icon display with point-and-click operation. Easy access to operational and system data such as connected cameras, recorded files, or alarm lists.

● Features

Up to 256-Unit Multi-Camera Display with Sequential Switching

Lets you display multiple camera images in **up to 16 windows** either in separate windows or in a single screen. You can assign up to 16 cameras to each window, allowing you to **register a total of up to 256 cameras**. **Sequential Switching** automatically switches the source camera at designated intervals, making it easy to monitor multiple camera images.

User-Friendly Interface with Point-and-Click Operation

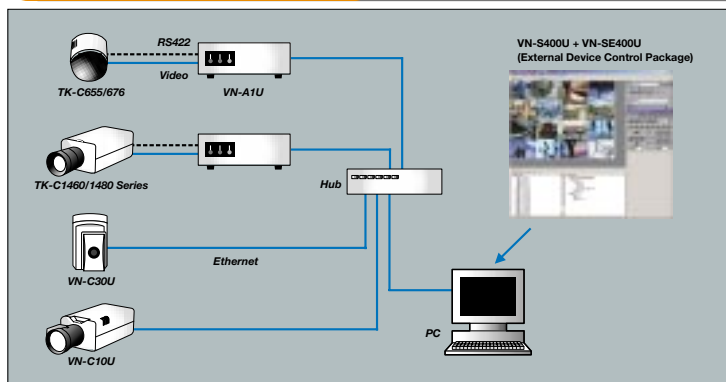
Our exclusive **Management Explorer** is now even easier to use. A new **user-friendly interface** with camera view window and controller windows integrated in a single screen enables you to monitor camera images, control operations, check camera status and other data — all with simple point-and-click operation.

Versatile Recording/Playback Functions including Timer Recording

With a wider variety of recording and playback functions to choose from, the VN-S400U gives you more flexibility and greater reliability. For recurrent recording at specified times, you can use **Timer Recording** with both weekly and daily setting options available. For security purposes, you can use **Timelapse Recording** for reliable long-duration recording or **Alarm Recording** to capture alarm events in detail. Also provided is an **Email Alert Function** that automatically sends email with attached JPEG image to a preset address whenever an alarm is detected.

Playback is easy and convenient, too. You can **easily access desired recorded scenes** by specifying a camera number or alarm index, or you can designate a specific section and extract it from the recordings.

● System Examples



External Device Control including Analog CCTV Camera Control

The VN-S400's expandable, versatile design makes it much more than just a controller for designated JVC V.NETWORKS cameras. Now you can control different types of cameras and other devices through a single control window. With the **VN-A1U Network Encoder** connected, you can connect JVC analog **CCTV cameras** such as the TK-C1480 or TK-C655/676. **External Device Control Package VN-SE400U** is available for Free download from JVC V.Networks website.

● JVC CCTV Cameras

• TK-C1480 Series



• TK-C655/676



Full Support for JVC V.NETWORKS Systems

Fully compatible with the latest JVC V.NETWORKS models such as VN-C10U, VN-C30U or VN-A1U, the VN-S400U supports the powerful features of these models, including **Pan/Tilt/Position Memory** for VN-C30U, and **Multi-Casting** capability and **Motion Detection** function for VN-C10U/VN-A1U.

● Specifications

Compatible device		Model	Firmware version
		VN-C10U	Ver. 1.2 or later
		VN-A1U	Ver. 2.0 or later
		VN-C30U (JPEG mode only)	Ver. 1.7 or later
		VN-C1U*	Ver. 4.0 or later
		VN-C2U*	Ver. 4.0 or later
		VN-C3U*	Ver. 2.1 or later
Number of camera windows that can be displayed simultaneously		16 (max.)	
Number of cameras that can be registered		256 (max.)	
Number of units than can be connected for sequential switching		16 (max.)	
System requirements	OS	Windows® 2000 Professional (SP3) / XP Professional (SP1) / XP Home Edition (SP1)	
	CPU	Pentium III 1 GHz or higher	
	Memory	256 MB or more	
	Hard disk space	20 MB or more (additional 200 MB required for recording)	
	Graphic board	DirectX support	
	Display	1024 x 768 pixels or more (1280 x 1024 recommended), True Color (24 bit) or more	
	LAN card	100Base-T/TX	
	Browser	Internet Explorer 6.0	
	Other	Microsoft® DirectX 8.1 retail runtime package, WMPDCDS8.exe required	

*VN-C1U/C2U/C3U has already been discontinued.

NOTE: To ensure continued, uninterrupted use of your VN-S400U, please access our online activation site and complete user registration within 30 days of installation.

JVC

PROFESSIONAL

DISTRIBUTED BY V.NETWORKS Website: <http://www.jvc-victor.co.jp/english/pro/vnetworks/index-e.html>
E.&O.E. Design, dimensions and specifications are subject to change without notice.