

# Panasonic®

## Network Interface Unit WJ-NT104



Monitoring enters the global network era



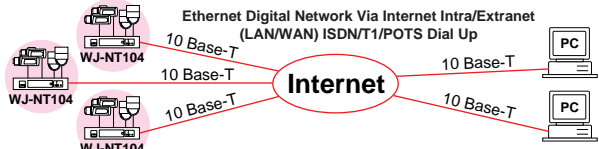


# Monitoring on a PC from anywhere via Network (LAN / WAN or the Internet).

The WJ-NT104 unit is fully equipped with image capture, JPEG, and HTTP server functions. It can provide images from up to four video sources with a 10BASE-T Ethernet Network.

Multiple site Monitoring can be conducted from multiple location (PC), enabling you to configure monitoring setups to suit your requirements.

The WJ-NT104 supports PC-based monitoring via a LAN / WAN or the Internet, enabling it to be used as part of an extremely flexible monitoring configuration. The WJ-NT104 overcomes time and location constraints, and can also be used as a tool for information service and other applications, in addition to basic monitoring applications.



## Monitoring System

Sites can be monitored from any desk, allowing precise, real-time checks of current activity.

at School

at Factory / Office

at Parking-lot

at Hospital / Day Care Center

## Information Service

Local images can be distributed over network allowing sites to provide attractive, real-time images at each independent PC work station.

Traffic Information Service

Live Image Service

Select from four operating modes to suit your requirements

Up to four video sources can be connected to a single WJ-NT104 unit. Four modes (listed below) are available for effective use of input from multiple video sources. Different modes can be selected to suit your requirements.

### View distributed images : RANDOM INPUT SELECTION MODE

This mode sends the same channel (the last one selected) to all users. If a user selects a new channel, the channel switches on other users' screens as well.

Video Sources: 1, 2, 3, 4. WJ-NT104. PCs: 1, 2, 3, 4.

### View images individually : MULTIPLE INPUT SELECTION MODE

This mode allows each user to view the individual channels he/she has selected. The channels do not change even if other users select different channels.

Video Sources: 1, 2, 3, 4. WJ-NT104. PCs: 1, 2, 3, 4.

### Supervisor can specify images : FIXED INPUT SELECTION MODE

This mode sends the same channel specified by the supervisor to all users. Channels cannot be switched at the user level.

Video Sources: 1, 2, 3, 4. WJ-NT104. PCs: 1, 2, 3, 4.

### Automatic image switching by : SEQUENCE MODE

This mode sends the same, automatically switched camera images to all users. The switching interval can be specified at the settings screen.

Video Sources: 1, 2, 3, 4. WJ-NT104. PCs: 1, 2, 3, 4.

## Easy monitoring with a conventional browser

Use of TCP/IP protocols enables easy monitoring from a regular PC\* browser. \*PC---Personal Computer with Microsoft® Windows for operation installed

**Main Page**

Operating screen can be customized

The WJ-NT104 incorporates a built-in homepage. This can be replaced with the user's own homepage as required. \*Customization is optional.

●Simple on-screen settings

The SYSTEM SETUP, NETWORK, ALARM, SERIAL PORT, MODEM, USER, HOST, DATE/TIME, and CAMERA MENU settings can all be configured on the screen.

**AV Disc Recorder WJ-DR200**

**Digital Video Duplex Multiplexer WJ-FS616**

**Matrix Control System System500**

Wide variety of page menus to suit the panasonic surveillance equipment.

## Built-in alarm functions enable reliable monitoring

● Capture critical moments without fail <Alarm recording function>

The following alarm recording functions can be selected as required.

### 1 Record one frame after receiving alarm 1-shot recording

For car number identification in parking lots, or personnel identification at cash dispensers, strong-rooms, or laboratory ID check entrances.

Time: Alarm, Interval, 1-shot recording

\* The interval can be set between 0 and 10 seconds, in 100mm increments.

### 2 Record images continuously after receiving alarm Continuous recording [after]

Useful for confirming personnel activity at reception counters or in shopping areas, and for similar applications.

Time: Alarm, Interval, Continuous recording

\* The interval can be set between 0 and 10 seconds, in 100mm units.

### 3 Record images continuously before and after receiving alarm Continuous recording [before/after]

Records prior to an alarm occurring - useful in locations where continuous recording of an event in progress is required.

Time: continuous recording (Before), Alarm, continuous recording (After)

\* Can only be used in "Fixed input selection mode".

● Detect important scenes efficiently <Alarm notification function>

Alarm notification can be sent to PC's destination IP address and/or the user's E-mail address. Up to 16 destinations can be registered.

Proprietary Alarm Notification (option) to PC's IP address

Access

Alarm list screen

The image to be displayed can be selected easily from the alarm list.

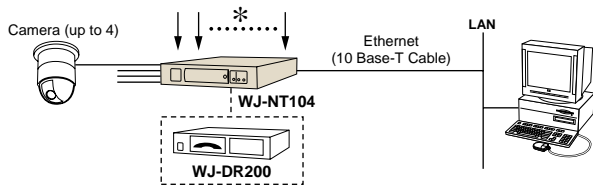
● Improved recording features by connecting with WJ-DR200

Connecting to the WJ-DR200 (available separately), which uses DVD-RAM, greatly increases the recording and image-search features available, further improving the monitoring system.

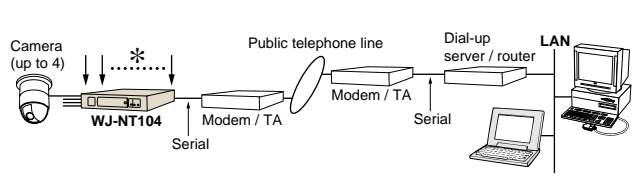
### Thumbnail search example

Displays 8 or 16 recorded images altogether on a single screen, allowing easy selection of the images to be viewed.

## Example of LAN / WAN connection system



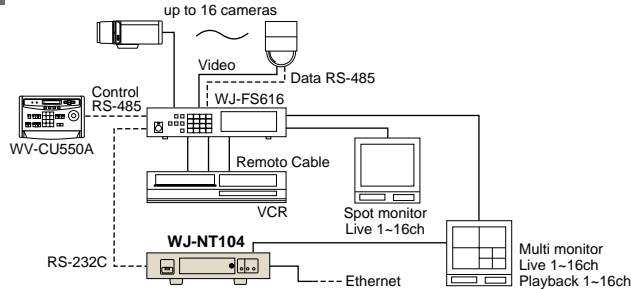
## Example of PPP connection system



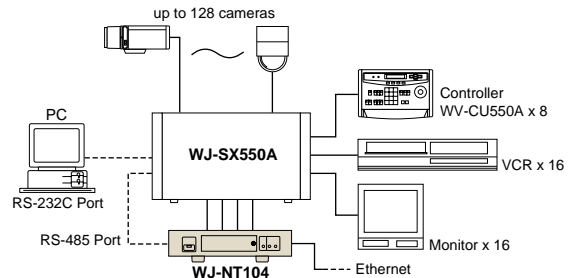
\* Up to 8 alarm input connections or up to 4 alarm inputs outputs

## TYPICAL SYSTEM CONFIGURATIONS

### 1 Panasonic Multiplexer WJ-FS616 with WJ-NT104

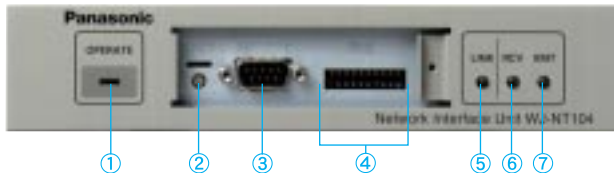


### 2 Panasonic system 500 with WJ-NT104



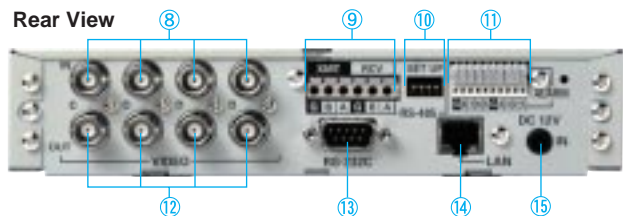
## MAJOR OPERATING CONTROLS

### Front View



1. Operate indicator
2. Reset switch
3. RS-232C port
4. Mode selector
5. Link indicator
6. Receiving indicator

### Rear View

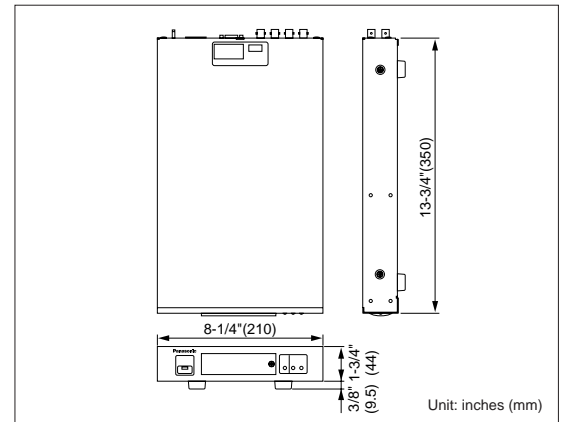


7. Transmitting indicator
8. Video input connectors
9. RS-485 connectors
10. RS-485 setup switches
11. Parallel (alarm) control port
12. Video output connectors
13. RS-232C port
14. Ethernet port
15. DC power connector

## SPECIFICATIONS

<b>General</b>	
<b>Power Source</b>	12 V DC, 0.8 A
<b>Ambient Operating Temperature</b>	-10°C - +50°C (14°F - 122°F)
<b>Ambient Operating Humidity</b>	Less than 90%
<b>Dimensions (W x H x D)</b>	8-1/4" x 1-3/4" x 13-3/4" (210 x 44 x 350 mm)
<b>Weight</b>	5.06 lbs. (2.3 kg)
<b>Input and Output</b>	
<b>Video Input</b>	1.0 V[p-p]/ 75Ω NTSC Composite Video Signal (x4)
<b>Video Output</b>	1.0 V[p-p]/ 75Ω NTSC Composite Video Signal (x4)
<b>Serial Control Port</b>	RS-232C (9-pin D-sub Connector), RS-485 (Terminal)
<b>Parallel (Alarm) Control Port</b>	Default 8-bit input (I/O selectable for all bits depending on the configuration)
<b>Image Resolution</b>	Selectable from 640 (H) x 480 (V); 640 (H) x 240 (V); 320 (H) x 240 (V); or 160 (H) x 120 (V)
<b>Image Compression</b>	JPEG (image quality selectable by 4 modes)
<b>Installed protocol</b>	HTTP, TCP/IP, PPP, FTP, SMTP
<b>Camera Coaxial Control</b>	Pan/tilt, Zoom, Focus, Preset, Auto Focus (for Combination Camera WV-CS604/CS654 Series)
<b>LAN Interface</b>	10 Base-T Connector
<b>Security measures</b>	Password type
<b>AC Adapter</b>	120 V AC 60 Hz (Power consumption : 17W)

## DIMENSIONS



Unit: inches (mm)

### Optional 19" Mounting Brackets

#### WV-Q204/1

(for mounting one WJ-NT104)

#### WV-Q204/2

(for mounting two WJ-NT104)

### Trademarks

- MS-DOS is a registered trademark of Microsoft Corporation in the U.S.A and other countries.
- Windows and Windows NT are trademarks of Microsoft Corporation in the U.S.A and other countries.
- Netscape Navigator is a trademark of Netscape Communications Corporation.
- Adobe Acrobat Reader is a trademark of Adobe Systems Incorporated.
- Other company names and product names appearing in the manual are registered trademarks or trademarks of the companies concerned.

• All TV pictures are simulated. • Weights and dimensions are approximate. • Specifications are subject to change without notice. • These products may be subject to export control regulations.

# Panasonic

**Panasonic Security & Digital Imaging Company**  
A Division of Matsushita Electric Corporation of America  
**Security Systems Group**

**Executive Office :** One Panasonic Way 3E7, Secaucus, New Jersey 07094

**Regional Office**

**Northeast :** One Panasonic Way, Secaucus, NJ 07094 (201) 348-7303

**Southern :** 1225 Northbrook Parkway, Suite 1-160, Suwanee, GA 30024 (770) 338-6838

**Midwest :** 1707 North Randall Road, Elgin, IL 60123 (847) 468-5211

**Western :** 6550 Katella Ave., Cypress, CA 90630 (714) 373-7840

DISTRIBUTED BY:

**PANASONIC CANADA INC.**

5770 Ambler Drive, Mississauga, Ontario, L4W 2T3 Canada (905) 624-5010

**PANASONIC SALES COMPANY**

**DIVISION OF MATSUSHITA ELECTRIC OF PUERTO RICO, INC.**

San Gabriel Industrial Park 65th Infantry Ave. KM. 9.5 Carolina, P.R. 00985 (809) 750-4300

Printed in Japan  
[2P-464]