

Panasonic

ideas for life



Mega Pixel Colour Network Cameras
WV-NP1000 Series

High Quality, Efficiency, and Reliability.

Panasonic's Mega Pixel Colour Network Camera Delivers Everything You Need.



Mega Pixel Colour Network Cameras
W V - N P 1 0 0 0
Series



MPEG-4/JPEG



MPEG-4 & JPEG Dual Stream Capable. For high-level 24-hour surveillance, the WV-NP1000 Series Mega Pixel Colour Network Cameras are ideal.

Panasonic introduces the new WV-NP1000 Series Mega Pixel Colour Network Cameras with a 1.25 Mega Pixel CCD. Dual streaming delivers both seamless motion MPEG-4 and high precision JPEG. Just as you would expect from Panasonic, the first to offer Auto Back Focus, this camera is also loaded with advanced features such as the SD Memory Card backup for network problems. With 600 TV lines of horizontal resolution, you can always count on high quality analogue output. Add the combination of networked operation convenience and high reliability, there's no question the WV-NP1000 Series are ideal for bank, office building, shopping mall, airport, and school surveillance applications, as well as other high-quality image transmission services.



Equipped with Progressive Scan 1.25 Mega Pixel CCD

This 1,280 x 960 pixel CCD uses progressive scan to smoothly reproduce images of moving subjects. Plus, when comparing its 1,280 x 960 JPEG images with conventional VGA (640 x 480) JPEG images, the JPEG image is able to cover an area four times wider.



Four Times Wider Area (Same Camera Position)
One camera covers a wider area.



WV-NP1000 Series (1,280 x 960)

Four Times Higher Resolution (Shooting Same Area)

Enlarged images show no loss of image quality, enabling superior electronic zoom.



Conventional

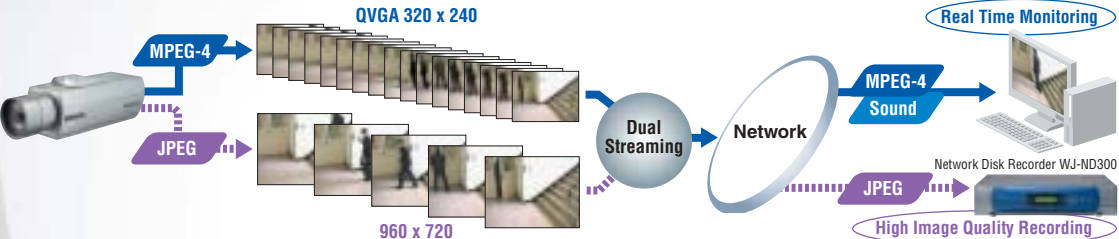
WV-NP1000 Series

Electronic Zoom



MPEG-4/JPEG Dual Streaming

This camera allows real time monitoring in MPEG-4 (QVGA 320 x 240: Max. 25 fps) while simultaneously shooting high-resolution JPEG (960 x 720: Max. 7.5 fps) images. While supporting a highly efficient network environment, it also provides high reliability required by surveillance applications.

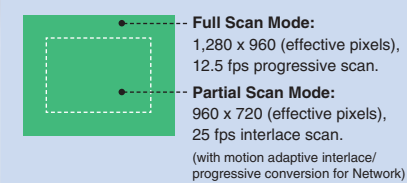


Transmits at High Frame Rate

In Partial Scan Mode, this camera can capture VGA (640 x 480) MPEG-4/JPEG images and output them over your network at 25 fps. (For details, please see Frame Rate Chart.)



Two CCD Scan Modes



You can choose the best-fit image size from a rich array of alternatives.

Scan Mode	Compression Format			JPEG			MPEG-4		
	Size	Frame Rate (fps)	Bit Rate (Mbps)	Size	Frame Rate (fps)	Bit Rate (Mbps)	Size	Frame Rate (fps)	Bit Rate (Mbps)
Full Scan Mode (Max. 12.5 fps*)	1,280 x 960	12.5	12.5	640 x 480	12.5	12.5	640 x 480	12.5	12.5
Partial Scan Mode (Max. 25 fps*)	960 x 720	25	12.5	640 x 480	25	12.5	640 x 480	25	12.5

*Camera frame rate, not transmitting over network, always available for analogue surveillance.

Frame Rate Chart

JPEG (MPEG-4 OFF)		Image Settings									
Image Resolution	Mode	0	1	2	3	4	5	6	7	8	9
1,280 x 960 Full Scan Mode	Super Fine	320	256	224	192	160	128	96	80	64	48
	Fine	5	6	8	9	11	12.5	12.5	12.5	12.5	12.5
	Normal	12.8	12.3	14.3	13.8	14.1	12.8	9.6	8.0	6.4	4.8
	Low	128	96	80	64	56	48	40	32	28	24
VGA (640 x 480) Full Scan Mode	Super Fine	320	256	224	192	160	128	96	80	64	48
	Fine	5	6	8	9	11	12.5	12.5	12.5	12.5	12.5
	Normal	12.8	12.3	14.3	13.8	14.1	12.8	9.6	8.0	6.4	4.8
	Low	128	96	80	64	56	48	40	32	28	24
QVGA (320 x 240) Full Scan Mode	Super Fine	320	256	224	192	160	128	96	80	64	48
	Fine	5	6	8	9	11	12.5	12.5	12.5	12.5	12.5
	Normal	12.8	12.3	14.3	13.8	14.1	12.8	9.6	8.0	6.4	4.8
	Low	128	96	80	64	56	48	40	32	28	24
960 x 720 Partial Scan Mode	Super Fine	320	256	224	192	160	128	96	80	64	48
	Fine	5	6	8	9	11	12.5	12.5	12.5	12.5	12.5
	Normal	12.8	12.3	14.3	13.8	14.1	12.8	9.6	8.0	6.4	4.8
	Low	128	96	80	64	56	48	40	32	28	24
VGA (640 x 480) Partial Scan Mode	Super Fine	320	256	224	192	160	128	96	80	64	48
	Fine	5	6	8	9	11	12.5	12.5	12.5	12.5	12.5
	Normal	12.8	12.3	14.3	13.8	14.1	12.8	9.6	8.0	6.4	4.8
	Low	128	96	80	64	56	48	40	32	28	24
QVGA (320 x 240) Partial Scan Mode	Super Fine	320	256	224	192	160	128	96	80	64	48
	Fine	5	6	8	9	11	12.5	12.5	12.5	12.5	12.5
	Normal	12.8	12.3	14.3	13.8	14.1	12.8	9.6	8.0	6.4	4.8
	Low	128	96	80	64	56	48	40	32	28	24

(above all figures are approximate, actual figures may differ depending on the network under the conditions.)
(system requirements of above figures are recommendable PC with CPU: Pentium®4 2.4 GHz or faster)

MPEG-4 (1 User)		MPEG-4 Bit Rate Settings (kbps)							
Image Resolution	Mode	4,096	3,072	2,048	1,536	1,024	512	256	128
VGA (640 x 480) Full Scan Mode	Low (fps)	12.5	12.5	12.5	12.5	9.4	4.7	2.1	1
	Normal (fps)	12.5	12.5	12.5	10.2	7.5	3	1.6	0.6
	Fine (fps)	12.5	11.2	10	8	4.7	2.4	1	0.6
QVGA (320 x 240) Full Scan Mode	Low (fps)	12.5	12.5	12.5	12.5	12.5	12.5	9	4.5
	Normal (fps)	12.5	12.5	12.5	12.5	12.5	7.5	3.1	1.6
	Fine (fps)	12.5	12.5	12.5	12.5	12.5	9	4.5	2.2
VGA (640 x 480) Partial Scan Mode	Low (fps)	25	25	25	19	12.5	6	3.2	1.4
	Normal (fps)	25	25	25	19	12.2	5.9	3	1.4
	Fine (fps)	25	23	20	16	11.4	4.3	2.2	1
QVGA (320 x 240) Partial Scan Mode	Low (fps)	25	25	25	25	25	12	5.8	2.9
	Normal (fps)	25	25	25	25	25	18.5	10.5	4
	Fine (fps)	25	25	25	25	24.5	12.4	6	3

Scan Mode	JPEG		MPEG-4 (User No.)		
	Size	Frame Rate (fps)	4,096 kbps	2,048 kbps	1,024 kbps
Full Scan Mode	1,280 x 960	5	3	5	7
	1,280 x 960	2	4	7	7
	1,280 x 960	1	4	7	7
Partial Scan Mode	960 x 720	5	—	—	7
	960 x 720	2	4	7	7
	960 x 720	1	4	7	7
Partial Scan Mode	VGA	5	4	7	7
	VGA	2	4	7	7
	VGA	1	4	7	7

How to read the DUAL Mode chart: • For example, the first line shows that in Full Scan Mode, up to three users can access MPEG-4 images at 4,096 kbps while 1,280 x 960 size JPEG images are being recorded at 5 fps.
• MPEG-4 is unicast transmission and normal mode. • Frame rate of MPEG-4 is same as MPEG-4 only.

Advanced 24-Hour Surveillance Features

Day/Night Switching for 24-hour Surveillance

As the area around the camera darkens, it automatically switches to black and white mode.

Then, when the lighting brightens, it automatically switches back to full-colour mode, allowing use of a single camera for 24-hour surveillance.



In Lighting as Low as 0.06 lux (B/W mode, at F1.4 lens)

When using the optional F1.4 lens, colour mode captures clear images in lighting as low as 1.0 lux. In black and white mode, the lighting can be as low as 0.06 lux. Sensitivity can be electronically enhanced up to 32x.

600 TV Lines Horizontal Resolution (Full Scanning Mode, in Colour)

Analogue output resolution is 600 TV lines in colour mode, 780 TV lines in black and white.

Auto Image Stabilizer Reduces Image Blurring

The Auto Image Stabilizer feature automatically adjusts for camera shake caused by strong winds or vibration from passing trains or trucks, keeping images clear and easy to read.



A Wealth of Handy Alarm Features

Cameras can be preset to respond to alarms from external sensors, Scene Change Detection, built-in Motion Detector sensors or command alarms from other equipment transmitted over the LAN.

External Device Operation

Signals transmitted from the alarm output connector on the back of the camera can be used to activate lights, buzzers or other external devices.

FTP Server Forwarding

JPEG images can be forwarded to a designated FTP server (10-5,000 frames/ 0.1 fps - 1 fps refresh rate).

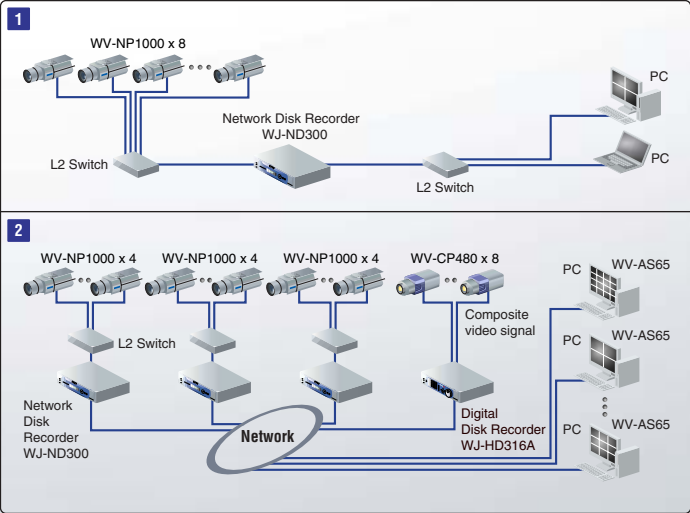
Alarm E-mail Notification

E-mail alarms can be sent to up to four e-mail addresses. Mail subject lines can be up to 50 characters long. Mail body text can be up to 200 characters long.

Automatic Alarm Transmission

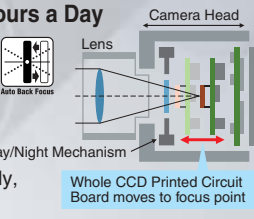
Alarm signals can be transmitted automatically to the WJ-ND300 Network Disk Recorder, e.g., to switch to a higher frame rate.

System Examples



Auto Back Focus for Perfect Focus 24 Hours a Day

This features adjusts the position of the CCD as the camera switches to black and white mode, keeping focus sharp and clear. In addition, one-push Auto Focus eliminates the need for manual focus adjustment during installation. Focus can also be adjusted remotely, using the setup menu or optional controller.



Scene Change Detection Alerts You to Interference with Cameras

An alarm notification is sent if the camera is interfered with (i.e. covered, spray painted, lens removed, or camera direction changed).



Motion Detection Warns of Movement in the Area Under Surveillance

You can set up to four search areas as well as sensitivity and direction. An alarm signal is transmitted when motion is detected.

Privacy Zone Masking for Up to Eight Locations

Up to eight zones can be hidden when the area under surveillance includes private areas.

Sound Detection Features

Each camera is equipped with a high-sensitivity microphone, allowing for complete monitoring of the situation (ITU-T Standard G.726 sound capability).



Security Features Just in Case

SD Memory Card Slot

If your network crashes, these cameras can automatically backup* surveillance images on the SD Memory Card (optional), thus allowing you to check captured images while the network was down. *Only when images are being transmitted regularly to an FTP server.



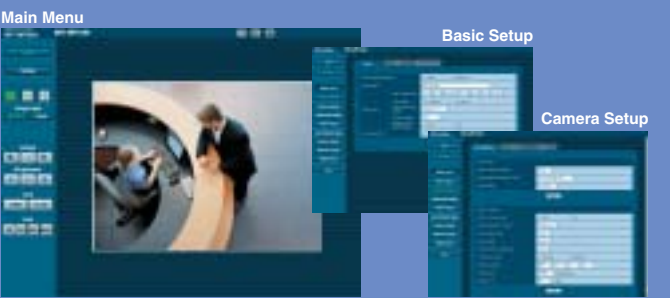
Authorized Access Management Features

Access can be authorized for up to eight IP hosts and restricted by name and password to up to 16 users. Each host or user can be granted any of three levels of access.

Three Access Levels

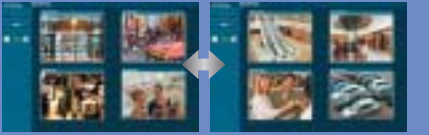
- **Administrator** Access to all operations and settings
- **Camera Control** Access to image display and camera controls
- **Live Only** Access to image display only

Simple Operation and Settings Screen



Monitoring Using Up to Eight Network Cameras

Images from up to four cameras can be displayed simultaneously. Switching allows use of up to eight cameras.



The above photographs were taken for the purpose of this explanation; actual performance and images may vary depending on environmental or other conditions.

SPECIFICATIONS: WV-NP1000 Series

Model No.	WV-NP1000	WV-NP1004
General Specifications		
Power Source	AC 220 V - 240 V 50 Hz	AC 24 V 50 Hz
Power Consumption	Approx. 10.5 W	Approx. 9.5 W
Ambient Temperature	-10 °C - +50 °C	
Ambient Humidity	90 % or less	
Controller Interface	Coaxial multiplex/Ethernet	
External I/O Terminals	DAY/NIGHT IN x1, AUX OUT x1, ALARM IN x1, ALARM OUT x1	
Dimensions (W x H x D)	84 x 83 x 197.5 mm (excluding connectors/terminals)	
Weight	Approx. 0.97 kg	
CAMERA		
Image Sensor	1/3-type interline transfer CCD	
Effective Pixels	Full scanning mode: 1,296 (H) x 966 (V) Partial scanning mode: 960 (H) x 720 (V)	
Scanning Area	Full scanning mode: 4.8 mm (H) x 3.6 mm (V) Partial scanning mode: 3.6 mm (H) x 2.7 mm (V)	
Scanning System	Full Scanning Mode: 12.5 fps progressive scan, Partial Scanning Mode: 25 fps 2:1 interface scan (with motion adaptive interface/progressive conversion for network)	
AGC	ON (LOW, MID, HIGH)/OFF	
Aperture Control	ALC/ALC+ELC (BLC ON/OFF available)	
Electronic Shutter	Full scanning mode: OFF(1/12.5), 1/25, 1/50, 1/60, 1/120, 1/250, 1/500, 1/1,000, 1/2,000, 1/4,000, 1/10,000 s Partial scanning mode: OFF(1/50), 1/120, 1/250, 1/500, 1/1,000, 1/2,000, 1/4,000, 1/10,000 s	
Sensitivity Up	OFF, x2AUTO, x4AUTO, x6AUTO, x10AUTO*, x2FIX, x4FIX, x6FIX, x10FIX*, x16FIX*, x32FIX* (*Selectable only when "Partial scan" is selected for the resolution setting.)	
White Balance	ATW1/ATW2/AWC	
DNR	LOW/HIGH	
Colour/BW	AUTO1/AUTO2/EXT/ON/OFF	
Electronic Zoom	x5	
Image Stabilizer	ON/OFF	
Camera ID	Up to 16 characters ON/OFF	
VMD Alarm	ON/OFF, 4 areas available	
Back Focus	ABF/MANUAL/CL/BW	
ALC Lens Drive	DC drive	
Lens Mount	CS-mount	
Analogue		
Signal	PAL	
Video Output	VBS: 1.0 V [p-p] / 75 Ω, composite (BNC)	
Scanning Frequency	Horizontal: 15.625 kHz Vertical: 50 Hz	
Synchronization	Internal synchronization, VD2 synchronization	
Resolution		
Full Scanning Mode	Horizontal: 600 TV lines (in colour), 780 TV lines (in B/W) Vertical: 450 TV lines	
Partial Scanning Mode	Horizontal: 540 TV lines (in colour), 570 TV lines (in B/W) Vertical: 400 TV lines	
S/N	50 dB or more (AGC OFF)	
Minimum Illumination	1.0 lux (in colour), 0.06 lux (in B/W) [F1.4 optional lens, AGC ON (HIGH), Full Scanning Mode (shutter speed 1/25 s) / Partial Scanning Mode (Electronic shutter speed OFF 1/50 s)]	
Network		
Network	10BASE-T/100BASE-TX, RJ45 connector	
Resolution		
Full Scanning Mode	JPEG: 1,280 x 960/VGA (640 x 480)/QVGA (320 x 240) MPEG-4: VGA (640 x 480)/QVGA (320 x 240), up to 12.5 fps	
Partial Scanning Mode	JPEG: 960 x 720/VGA (640 x 480)/QVGA (320 x 240) MPEG-4: VGA (640 x 480)/QVGA (320 x 240), up to 25 fps	
Image Compression Method		
JPEG	Image quality: 0 SUPER FINE/1 FINE/2/3/4/5 NORMAL/6/7/8/9 LOW (10 steps: 0-9) Transmission type: PULL/PUSH	
MPEG-4	Image quality: LOW/NORMAL/FINE Transmission type: UNICAST/MULTICAST Max. bit rate: 64 kbps/128 kbps/256 kbps/1,024 kbps/1,536 kbps/2,048 kbps/3,072 kbps/4,096 kbps 0.1 fps - 25 fps (Frame rate of JPEG will be limited when operating both JPEG and MPEG images.)	
Refresh Interval (JPEG)	G.726 (ADPCM) 32 kbps/64 kbps	
Audio Compression Method		
Bandwidth Control	64 kbps/128 kbps/256 kbps/512 kbps/1,024 kbps/2,048 kbps/4,096 kbps/10 Mbps/Unlimited	
Protocol	TCP/IP, UDP/IP, HTTP, RTP, FTP, SMTP, DHCP, DNS, DDNS, NTP, SNMP	
OS	Microsoft® Windows® 2000 Professional SP4, Microsoft® Windows® XP Home Edition SP2, Microsoft® Windows® XP Professional SP2	
Web Browser	Internet Explorer 6.0 Service Pack2	
Maximum Concurrent Access Number	8 (Depends on network conditions.)	
FTP Client	Alarm image transmission, FTP periodic transmission (When failed to transmit, backup on an optional SD memory card is available.)	
Multi-Screen	Images from 8 cameras (4 cameras x 2 groups) can be displayed.	
SD Memory Card	Manufactured by Panasonic Capacity: 64 MB, 128 MB, 256 MB, 512 MB, 1 GB	

SPECIFICATIONS: WV-LZA62/2

Focal Length	2.8 - 6 mm	Angular Field of View	H: 47.9° (Tele) 99.6° (Wide) V: 35.6° (Tele) 72.9° (Wide)
Aperture	F1.4 (Wide) to F176, close	Minimum Object Distance	1.2 m - ∞
Ratio	F2.1 (Tele) to F176, close	Mount	Special C-Mount
Iris Type	Automatic	Weight	118 g
Image Size	4.8 (H) x 3.6 (V) mm (ø6 mm)	Dimensions (W x H x D)	64 x 60 x 60.9 mm

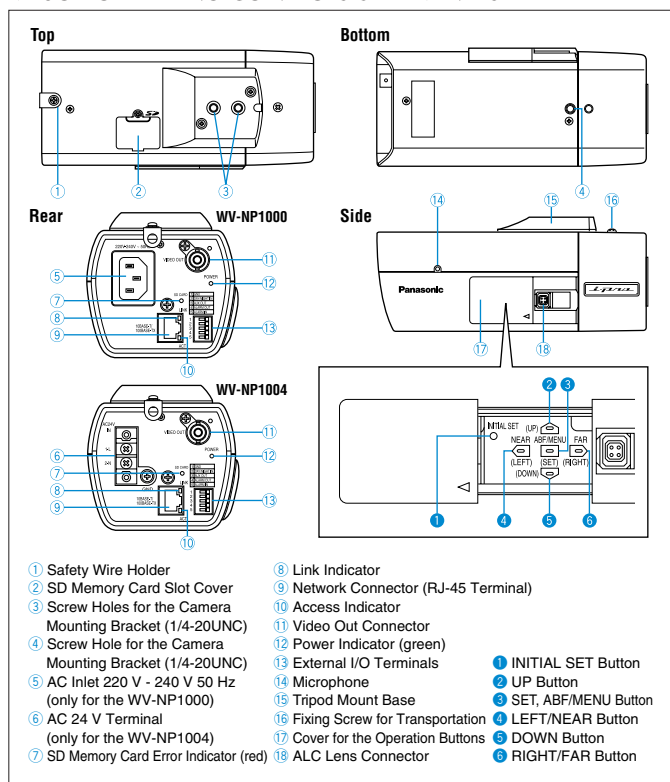
Trademarks and registered trademarks – Microsoft, and Windows are registered trademarks of Microsoft Corporation in the U.S. and other countries.
– Intel and Pentium are trademarks of Intel Corporation.

Important – Safety Precaution: carefully read the operating instructions and installation manual before using this product.

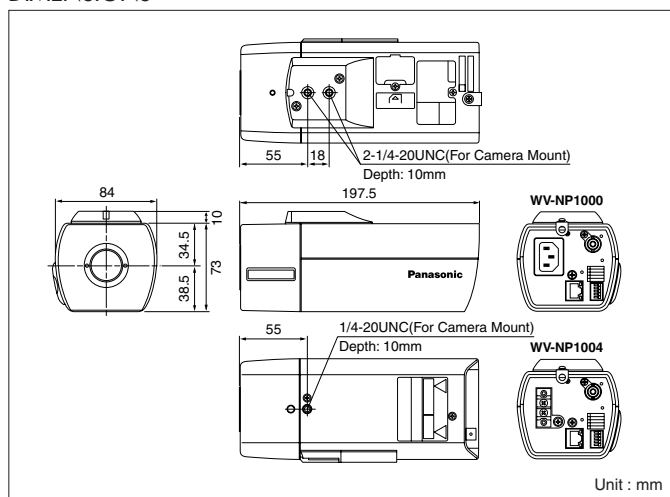
– Panasonic can not be responsible for network performance and/or other manufacturer products that reside on the network.

• All TV pictures are simulated. • Weights and dimensions are approximate. • Specifications are subject to change without notice. • These products may be subject to export control regulations.

MAJOR OPERATING CONTROLS & TERMINALS



DIMENSIONS



OPTIONAL COMPONENTS & ACCESSORIES



DISTRIBUTED BY:

Panasonic System Solutions Company
Matsushita Electric Industrial Co., Ltd.
4-3-1, Tsunashima-higashi, Kohoku-ku, Yokohama,
223-8639, Japan
Tel 81(0)45-540-5769
Fax 81(0)45-540-5773
URL <http://panasonic.co.jp/pss/cctv/en/index.html>

Panasonic
Panasonic is the brandname of Matsushita Electric.
Printed in Japan WV-JKNP1000C(2N-760)