

JVC®

The Perfect Experience / —

PTZ DAY/NIGHT DOME CAMERA

TK-C625E

(AC 24 V)

Compact size ($\phi 120$ mm) high resolution PTZ dome camera with 12x zoom and IR cut filter for 24 hours surveillance

◆ **0.075** Super LoLUX™
lx (B&W Mode)

◆ **1.8** Super LoLUX™
lx (Colour Mode)

540 TV Lines

OPTIONAL CAMERA BRACKETS



■ **WB-S621U**
Pendant mount



■ **WB-S622U**
Wall mount



■ **WB-S623U**
Ceiling bracket



■ **WB-S625U**
Ceiling recessed bracket



■ **WB-1540U**
Outdoor housing



- 1/4" High resolution IT CCD with 440,000 effective pixels
- 12x optical zoom lens (3.8 mm to 45.6 mm)
- Super LoLux™ sensitivity:
 - Colour mode 3.6 lx (AGC 20 dB, 50% video, wide end)
 - 1.8 lx (AGC 20 dB, 25% video, wide end)
 - B&W mode 0.15 lx (AGC 20 dB, 50% video, wide end)
 - 0.075 lx (AGC 20 dB, 25% video, wide end)
- Day/Night surveillance with auto IR cut filter on/off
- Built-in menu
- Private mask and Auto black
- Auto trace/Auto pan/Auto patrol/Auto return/Area title
- Variable panning/tilting speed
- 100 preset positions
- Easy AF and one push auto focus
- 360 degree endless rotation, 180 degree Auto flip
- RS-422A/RS-485 interface
- Alarm terminal (Input x 1, Output x 1)

Affordable dome camera. Compact size only 120 mm diameter with 540TVL resolution, and Day/Night switching function.

1/4" High resolution IT CCD

The TK-C625E incorporates a high resolution 1/4" interline transfer CCD (752H x 582V pixels) to deliver very sharp, clear pictures.

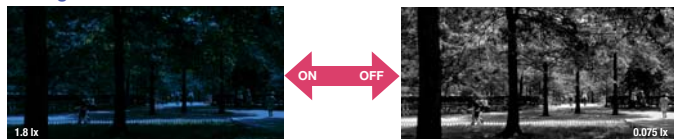
Super LoLux™ 1.8 lx and high quality colour pictures

Super LoLux™ lets you view high quality video in ambient light as low as 1.8 lx in colour mode and 0.075 lx in B&W mode, making the TK-C625E more sensitive than the naked eye.

Day/Night switching function (IR cut filter ON/OFF)

Objects illuminated with infrared wavelengths between 750 nm to 880 nm can be clearly and accurately seen. The IR cut filter automatically switches between ON or OFF, according to the level of ambient light.

■ Image of IR Cut Filter ON/OFF



*These are sample images. Actual pictures may vary depending on conditions.

AF for IR function

Auto focus function activates when switching from colour to black and white or vice versa, ensuring clear pictures even during switching.

High quality and high speed 12x zoom lens

The TK-C625E features a professional quality F1.6 lens with a 12x optical zoom range (3.8 mm to 45.6 mm).

Auto return function

The camera can be set to return automatically to its original position or to restart a specified operation (auto pan or auto patrol) at selected intervals. Intervals can be selected from 1, 2, 3, 5, 10, 20, 30 or 60 minutes.

Auto patrol function

3 preset patterns, selected from 100 preset positions available, can be set for auto patrol so that the camera moves automatically and sequentially to the set positions at fixed intervals.

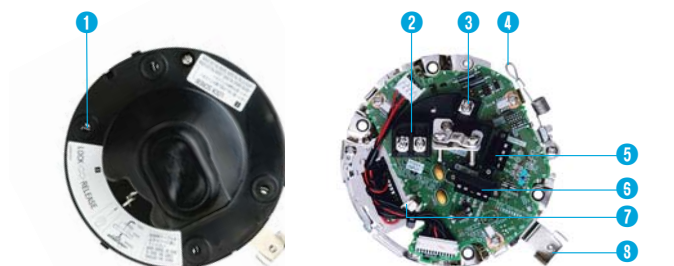
Auto trace function

When Auto trace mode is activated, a 30 second sequence of manual operations is memorised and then repeated every 30 seconds.

Auto flip function

With this function switched on, the camera automatically rotates 180 degrees horizontally when it reaches its tilting limit.

Controls, connectors and indicators



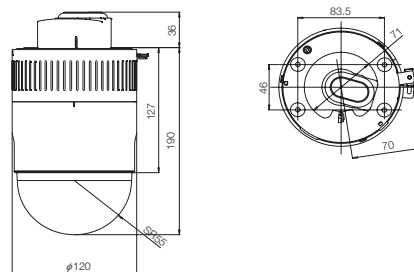
- | | |
|--|---|
| 1 Cover fastening screw | 5 [CONTROL] Control signal terminal |
| 2 [AC24V - INPUT] AC24V input terminal | 6 [ALARM IN/OUT] Alarm input/output terminals |
| 3 [VIDEO OUT] Coaxial cable terminal | 7 Safety wire mounting hole |
| 4 Safety wire | 8 Locking screw |

Specifications

CAMERA	
Image device	1/4" IT CCD
Number of effective pixels	440,000 (752H x 582V)
Sync system	Internal, Line lock
Video output	Composite video signal: 1.0 V (p-p), 75 ohms
S/N	50 dB, AGC off, Enhance level-5
Horizontal resolution	540 TV lines
Minimum illumination	
Colour mode	3.6 lx (F1.6, AGC 20 dB, 50% video, wide end) 1.8 lx (F1.6, AGC 20 dB, 25% video, wide end)
B&W mode	0.15 lx (F1.6, AGC 20 dB, 50% video, wide end) 0.075 lx (F1.6, AGC 20 dB, 25% video, wide end)
White balance	ATW/AWC/Manual paint (2,300K to 10,000K)
Electronic shutter	1/50 (Standard), 1/120 (60 Hz, flickerless), 1/250, 1/500, 1/1000, 1/2000, 1/4000, 1/10000
AGC	Off/10 dB/20 dB
Backlight compensation	4 patterns
Camera ID	16 characters
LENS	
Zoom ratio	12x, 3.8 mm to 45.6 mm
Maximum aperture	F1.6 (Wide)
Zooming speed	Approx. 2.0 sec. (Max.)
Focus speed	Approx. 1.2 sec. (Max.)
MOVING MECHANISM	
Preset positions	100
Panning range	360° endless rotation
Panning speed	1.5°/sec. to 180°/sec. (Preset)
Tilting range	0° to 90°
Tilting speed	1°/sec. to 120°/sec. (Preset)
GENERAL	
Interface	RS-422A or RS-485 (Switchable), 9,600 bit/sec.
Power supply	AC 24 V (50 Hz/60 Hz)
Power consumption	1.5 A
Operating temperatures	-10°C to 50°C (Operating), 0°C to 40°C (Recommended)
Dimensions	φ120 mm x 190 mm (H)
Weight	1.3 kg
Accessories	Instructions x 1, Ceiling mount x 1, Template x 1, Ferrite core x 1, Wire clamp x 1

Dimensions

Unit: mm



Related equipment

- VR-609E/616E
Digital video recorder



Photo: VR-616E

- GSC-2000J/VR
System controller



Design and specifications subject to change without notice.

JVC®

DISTRIBUTED BY



Professional Systems company of Victor Company of Japan, Ltd. has received ISO14001 and ISO9001 Certifications under the global standard for environmental management.

Printed in Japan

KCN-1835 CETKC625EYT0504

"JVC" is the trademark or registered trademark of Victor Company of Japan, Limited.