

Panasonic
ideas for life

Vandal Proof
Super Dynamic II Colour Cameras
(with Low-Light B/W Mode)

WV-CW470A Series



The Easy to Install

Vandal Proof

Weather Proof

Camera Solution



SDII
Super Dynamic

Heavy Duty Construction



**Actual
Size**

(WV-CW474AF)

Die-cast aluminum body Shock Resistant

With a body made of die-cast aluminum and a dome made of 3.5mm thick polycarbonate, these cameras are tough enough to resist severe shocks.

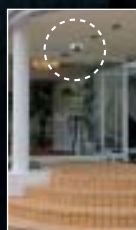


The camera lens unit has a spring structure, so the chassis can withstand external shocks.



IP66 approved Rain and Wind Resistant

Meet IP66 international standards. With excellent dust and moisture resistant capabilities, these cameras can be used indoor applications and outdoors, under building eaves.



Heater Unit: WV-CW3H (Optional) Ideal for Varying Temperatures

The optional heater unit adjusts automatically to temperature fluctuations, helping to prevent dew condensation.



High Performance in a Rugged Body.

Panasonic's new Vandal Proof Super Dynamic II Colour Cameras. The WV-CW470A Series are not only rugged and loaded with high-performance features, they are also easy to install. Highly resistant to dust, moisture and shock these units satisfy international standards. The WV-CW470A Series include high image quality, increased sensitivity, day/night switching for 24-hour surveillance and a multi-function motion detector. Free from conventional limitations on placement, application and objective, these multipurpose colour cameras are ideal for numerous surveillance applications.

Feature Loaded & Simple to Install

For single-camera 24-hour surveillance
Day/Night Switching



Day

Night

Versatile attachment with Unlimited Positioning
3-Dimensional Hinges



Senses motion and sends alarm signal
Motion Detector



80 times dynamic range
Super Dynamic II





SDII

Super Dynamic

Two Types to Choose From



With All the Features You Need for a Wide Variety of Surveillance Applications.

Feature Loaded

Single-camera 24-hour surveillance Day/Night Switching

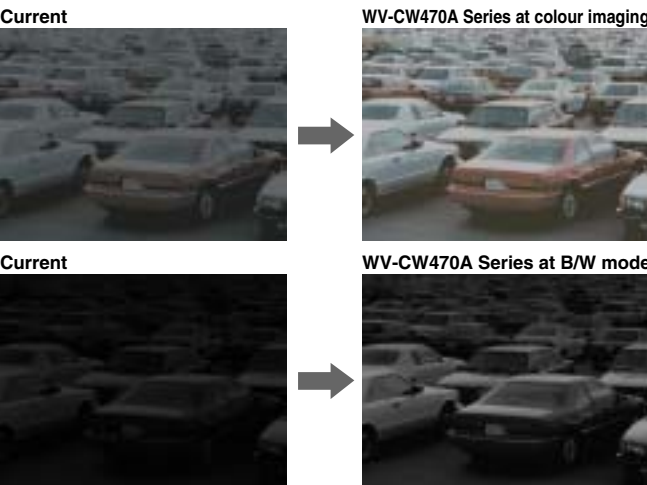


To allow 24-hour surveillance, these cameras (in high-sensitivity mode) sense darkness and switch automatically from daytime colour to nighttime black-and-white with duration and timer setting to meet exact installation requirements. They can also be switched from colour to black-and-white manually.



Full-colour images at 0.8lux Black-and-white images at 0.1lux

These cameras support full-colour surveillance in low-light situations like this parking lot, switching to black-and-white allows surveillance in light as low as 0.1lux. IR response down to 0.00lux is valid. 10x auto electronic sensitivity up is also supported (in fixed mode 32x available).



510-line horizontal resolution (High) in colour mode

Equipped with a powerful 752(H) x 582(V) 1/3-type CCD, these cameras deliver beautifully clear images with 510 lines (at High) and 480 lines horizontal resolution at colour imaging, and 570 lines at B/W mode.

2x variable-focal lens is standard equipment

Equipped with a 2x variable-focal lens plus an additional 2x electronic zoom, these cameras can view their subjects in greater details.

With Super Dynamic II, backlighting is no problem



With a 80 times dynamic range, Panasonic's proprietary Super Dynamic II processing yields clear images even in high-contrast or backlit lighting situations.



Digital Motion Detector senses movement and sends an alarm signal

When the Motion Detector senses movement in the monitored image, it automatically sends an alarm signal to the system. When linked to a recording device, it provides an efficient way to avoid missed images.



Character displays title

The monitor can display title up to 16 roman letters or numbers. By allowing instant identification of pre-set camera locations, this feature can help prevent errors during emergency situations.

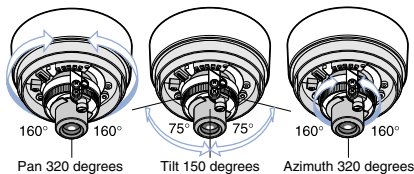


Photographs were taken for the purpose of explanation; actual images may differ.

Simple to Install

Proprietary 3-D hinge makes adjustments easy

The 3-dimensional hinge (Pan, Tilt and Azimuth) allows the camera to be rotated as well as moved horizontally and vertically. Digital signal processing allows the image itself to be shifted up, down, left, right, or inverted. Choose precisely the camera angle you need; no camera makes it easier.



Basic settings couldn't be simpler

Simple dipswitches control Soft/Sharp, Day/Night: Off/Auto and other basic settings.

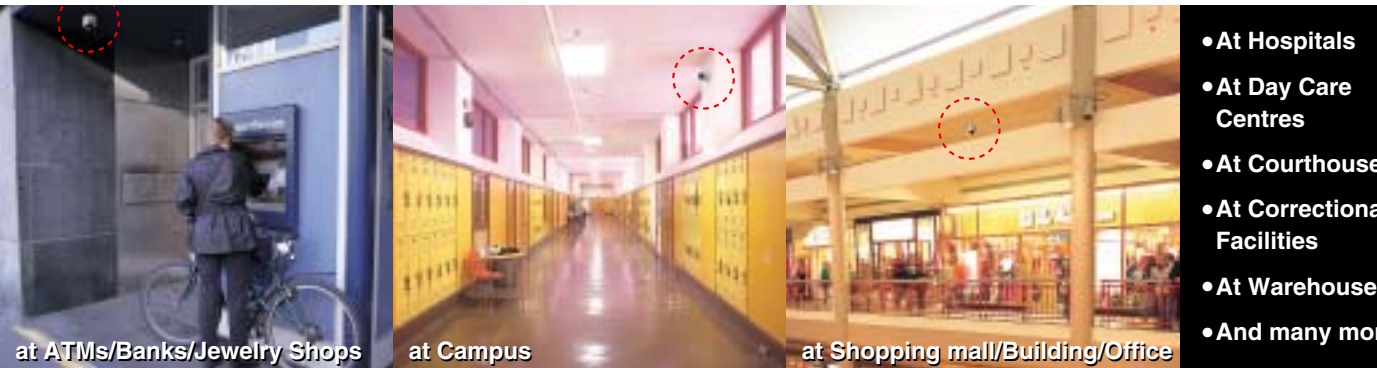
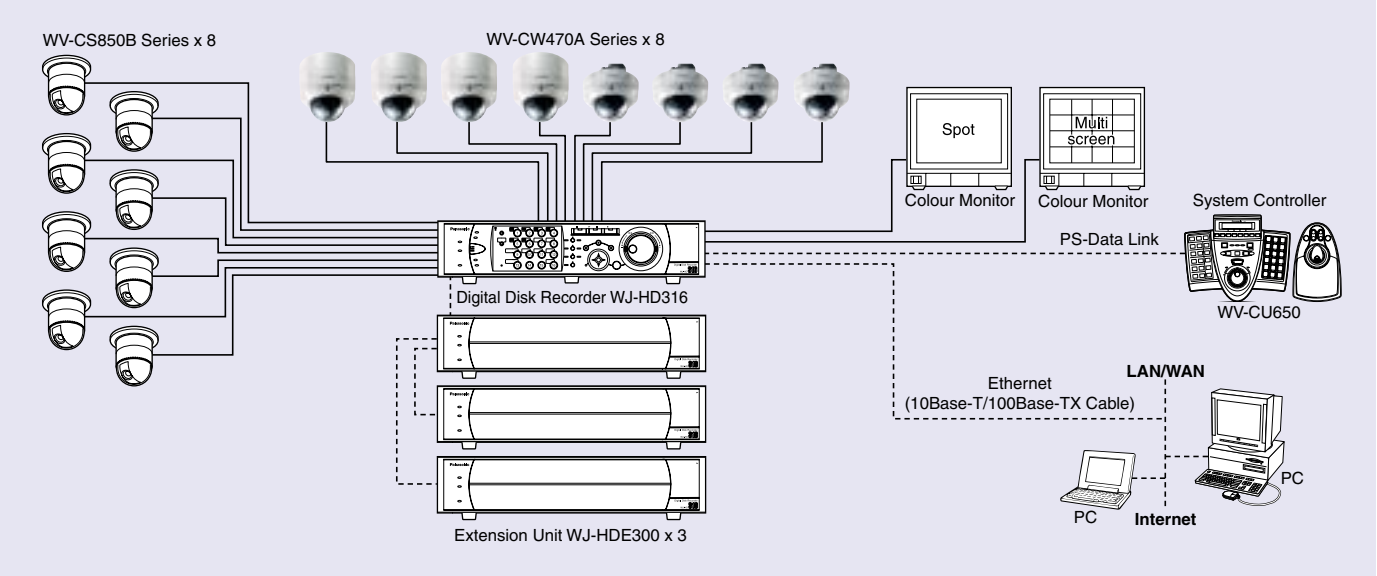


Equipped with Monitor output connector

Since a small LCD monitor (option) can be attached to the monitor output connector (3.5mm in diam. Mini jack), camera angle and focus can be checked on the spot.

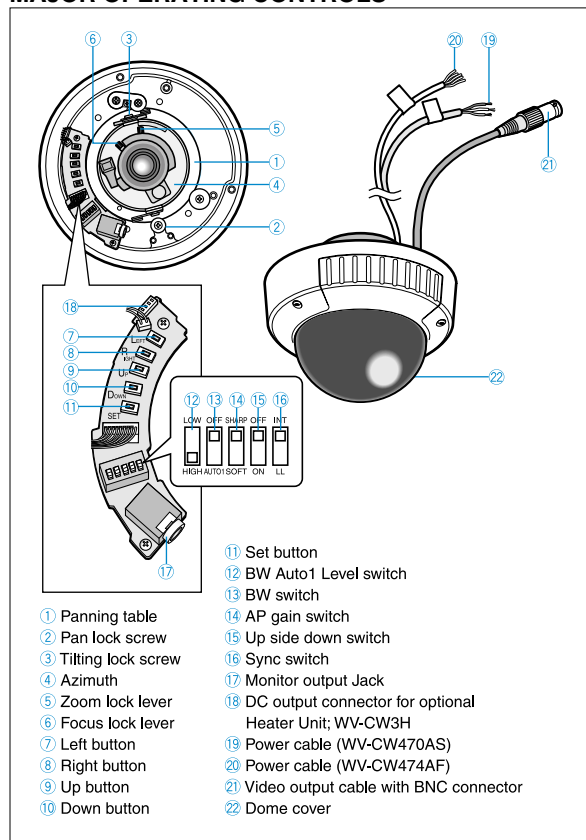


SYSTEM EXAMPLE



- At Hospitals
- At Day Care Centres
- At Courthouses
- At Correctional Facilities
- At Warehouses
- And many more

MAJOR OPERATING CONTROLS



OPTIONAL COMPONENTS & ACCESSORIES

Heater Unit
WV-CW3H



Smoke Dome Cover
WV-CW2S



Digital Disk Recorders
WJ-HD316 (16ch)



PS-Data

WJ-HD309 (9ch)



PS-Data

MATRIX SYSTEM 500

Matrix Switcher
WJ-SX550C

Card Cage
WJ-AD550

System Controller
WV-CU550CJ



System Controller
WV-CU650



PS-Data

Colour Monitors

WV-CM2080

55cm CRT



PS-Data

WV-CM1780

45cm CRT



PS-Data

WV-CM1480

40cm CRT



PS-Data

WV-CM1420

37cm CRT



PS-Data

WV-CM1020

25cm CRT



PS-Data

SPECIFICATIONS

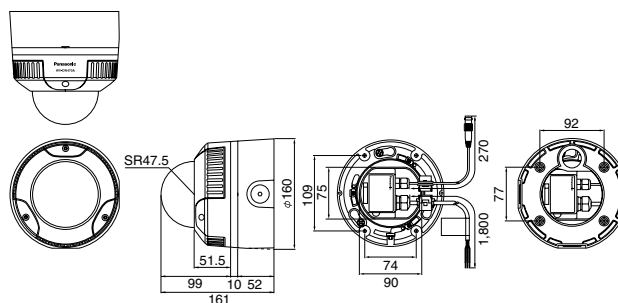
PAL CCIR

| Model No. | WV-CW470AS | WV-CW474AF |
|-------------------------------------|--------------------------------------------------------------------------------------------------------------------------------------------------------------------------------------------------------------------------------------------------------------------------------------------------------------------------------------------------------------------------------------------------------------|------------------------------------------------------------------------------------------------------------------|
| Type | Surface mount type | Flush mount type |
| Pick Up Device | 752 (H) x 582 (V) pixels, interline transfer CCD | |
| Scanning Area | 4.86 (H) x 3.62 (V) mm, (Equivalent to 1/3" tube) | |
| Scanning | 625 lines / 50 fields / 25 frames | |
| Scanning System | 2 : 1 interlace | |
| Synchronization | Internal / Line-Lock (220V ~ 240V AC / 24V AC) / VD2 | |
| Video Output | 1.0V [p-p] / 75 Ω / PAL composite signal / BNC connector | |
| Horizontal Resolution | 510 lines (at High) and 480 lines at colour imaging mode, 570 lines at B/W mode | |
| Minimum Illumination (at F1.4 Wide) | 0.8 lux at colour imaging mode 0.1 lux at B/W mode | |
| Signal to Noise Ratio | 50dB (at AGC Off, Weight On, AP On) | |
| Dynamic Range | 48dB (typical) | |
| Functions | Camera Title 16 character display (alphabet, numeric, symbols) Light Control ALC mode Super Dynamic II On / Off Electronic Shutter Off, 1/120, 1/250, 1/500, 1/1,000, 1/2,000, 1/4,000, 1/10,000 sec. AGC On (High / Mid / Low) / Off Electronic Sensitivity Up Off, Auto (x2, x4, x6, x10), Fix (x2, x4, x6, x10, x16, x32) White Balance ATW 1 / ATW 2 / AWC Motion Detector On / Off | |
| Lens | Type 2x variable focal lens Focal Length 3.8 ~ 8.0 mm Aperture Ratio F1.4 (Wide) to F176, close / F1.8 (Tele) to F176, close Min. Object Distance 1.2 m (3.9 ft) ~ ∞ | |
| Ambient Operating Temperature | -10°C ~ +50°C [-30°C ~ +50°C with optional Heater Unit (WV-CW3H)] | |
| Ambient Operating Humidity | Less than 90% | |
| Power Source | 220V ~ 240V AC, 50Hz | 24V AC 50Hz, or 12V DC |
| Power Consumption | 5.2W (camera only) 14.0W (with optional Heater Unit) | 12V DC, 367mA (camera only) 24V AC 50Hz, 3.8W (camera only) 24V AC 50Hz, 12.1W (optional Heater Unit only) |
| Dimensions (D) x (H) mm | ø160 x 161 | ø154 x 160.5 |
| Weight (approx.) | 2.15 kg | 1.45 kg |

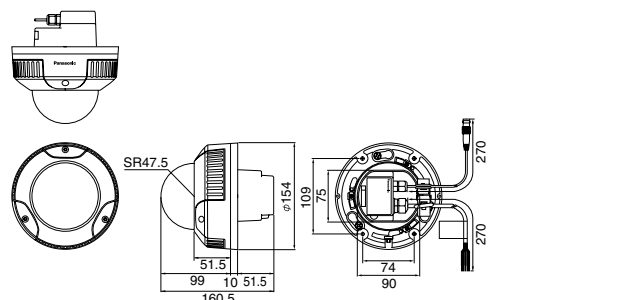
APPEARANCE

Unit: mm

WV-CW470AS (Surface mount type)



WV-CW474AF (Flush mount type)



Important – Safety Precaution: carefully read the operating instructions and installation manual before using this product.

• All TV pictures are simulated. • Weights and dimensions are approximate. • Specifications are subject to change without notice. • These products may be subject to export control regulations.

DISTRIBUTED BY:

Panasonic System Solutions Company
Matsumita Electric Industrial Co., Ltd.
 4-3-1, Tsunashima-higashi, Kohoku-ku, Yokohama,
 223-8639, Japan
 Tel 81(0)45-540-5769
 Fax 81(0)45-540-5773
 URL <http://panasonic.co.jp/pss/cctv/en/index.html>

Panasonic

Panasonic is the brandname of Matsushita Electric.
 Printed in Japan WV-JKCW474AC (2N-692E)