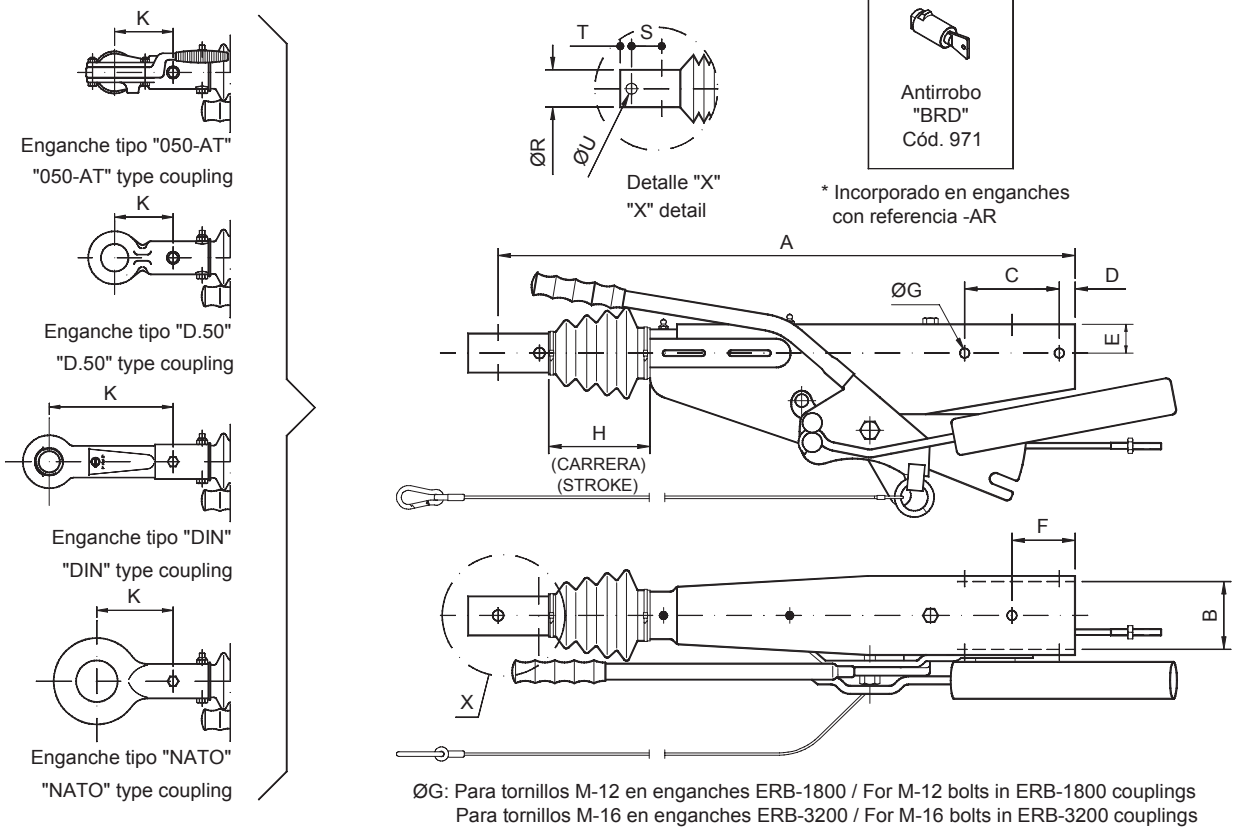


Enganches de inercia "BRD" para timón recto.

"BRD" inertia couplings for straight drawbars.

VELOCIDAD



ØG: Para tornillos M-12 en enganches ERB-1800 / For M-12 bolts in ERB-1800 couplings
 Para tornillos M-16 en enganches ERB-3200 / For M-16 bolts in ERB-3200 couplings

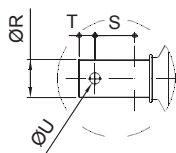
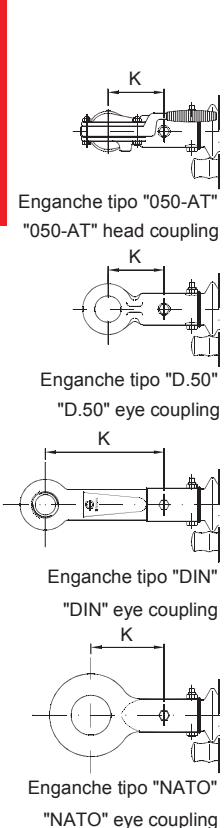
| Tipo de enganche Type of coupling | Detalle "X" (Caña Deslizante) "X" Detail(Sliding draw tube) | | | |
|--------------------------------------|--|----|----|----|
| | R | S | T | U |
| ERB -1800 - C 70... | 48,5 | 51 | 38 | 13 |
| ERB - 3200 C 100 | 60 | 40 | 20 | 15 |

| Cód. Code | Referencia/Reference | Referencia de origen Original Reference | Fuerza arrastre Capacity G _A (Kg.) | | Fuerza vertical "S" máx. vertical capacity (Kg.) | Valor "D" Value (kN) | A | B | C | D | E | F | H | K | Peso Aprox. Aprox. weight (Kg.) |
|--------------|-----------------------------|--|--|------|---|----------------------|-----|-----|---|-----|----|----|-----|-----|------------------------------------|
| | | | Mín. | Máx. | | | | | | | | | | | |
| ** | ERB - 1800 - C 70 / 050 AT | S1800/70 | 900 | 1800 | 100 | 16,7 | 734 | 70 | | | 30 | | | 108 | 22 |
| ** | ERB - 1800 - C 70 / D.50 | | | | | | | | | | | | | 127 | 21 |
| 15270 | ERB - 1800 - C 70 / DIN * | | | | | | | | | | | | | 234 | 22,6 |
| ** | ERB - 1800 C 70 / NATO | | | | | | | | | | | | | 180 | 24,4 |
| ** | ERB - 3200 - C 100 / 050 AT | 3200S100 | 1600 | 3200 | 150 | 28,5 | 745 | 100 | | 120 | 20 | 80 | 100 | 119 | 32 |
| ** | ERB - 3200 - C 100 / D.50 | | | | | | | | | | | | | 109 | 32 |
| 15392 | ERB - 3200 - C 100 / DIN * | | | | | | | | | | | | | 243 | 33 |
| ** | ERB - 3200 C 100 / NATO | | | | | | | | | | | | | 118 | 32,6 |

NOTAS DE INTERÉS: / NOTES OF INTEREST:
 * Acoplamiento no se puede montar en Bocas BEA 35/50 / It's forbidden to mount this kind of acouplings in jaws BEA 35/50
 ** Para estos enganches consultar central / For these couplings ask our staff.

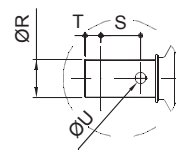
Enganches de inercia "BRD" para lanza en "V".

"BRD" inertia couplings for "V" shaped drawbars.



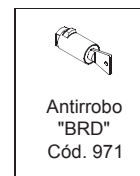
Detalle "X"
Para enganches:
EVB-1800 EH...
EVB-2600 EH...

"X" detail
For couplings:
EVB-1800 EH...
EVB-2600 EH...

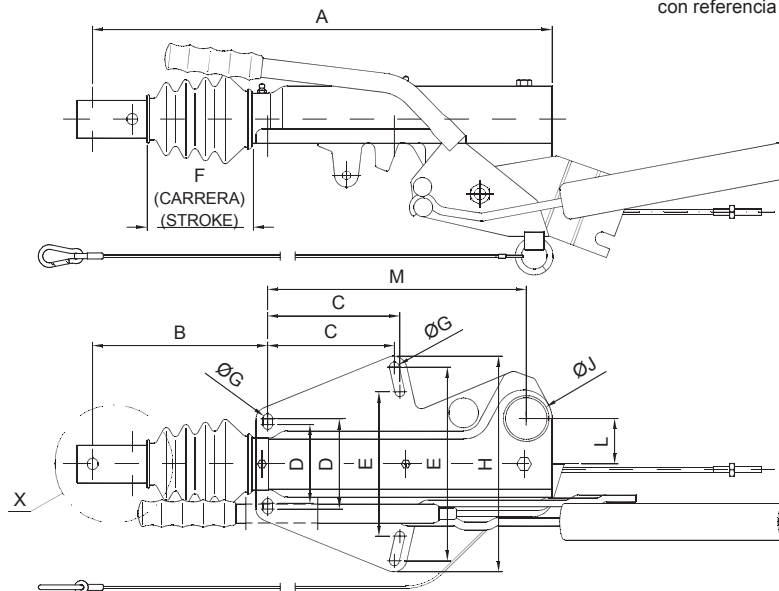


Detalle "X"
Para enganche:
EVB-3500 EH...

"X" detail
For couplings:
EVB-3500 EH...



* Incorporado en enganches con referencia -AR



| Tipo de enganche Type of coupling | Detalle "X" (Caña Deslizante) "X" Detail(Sliding draw tube) | | | |
|--------------------------------------|--|----|----|----|
| | R | S | T | U |
| EVB - 1700/2750 EH | 48,5 | 51 | 38 | 13 |
| EVB - 3500 EH | 60 | 40 | 20 | 15 |

| Cód. Code | Referencia/Reference | Referencia de origen Original Reference | Fuerza arrastre Capacity G.A (Kg.) | | Fuerza vertical "S" máx. vertical capacity (Kg.) | Valor "D" Value (kN) | A | B | C | D | E | F | φG | H | φJ | K | L | M | Peso Aprox. Aprox. weight (Kg.) | |
|-----------|---------------------------|---|------------------------------------|------|--|----------------------|-----|-----|-----|-----|-----|-----|-----|-----|----|---|-----|----|---------------------------------|-------|
| | | | Mín. | Máx. | | | | | | | | | | | | | | | | |
| 1510 | EVB - 1700 / 050 EH-AT | EH17 | 850 | 1700 | 100 | 15,84 | | | | | | | | | | | | | 108 | 18,60 |
| ** | EVB - 1700 / D.50 EH | | | | | | | | | | | | | | | | | | 127 | 19,00 |
| 1522 | EVB - 1700 / DIN EH * | | | | | | | | | | | | | | | | | | 234 | 23,00 |
| ** | EVB - 1700 / NATO EH | | | | | | | | | | | | | | | | | | 180 | 23,00 |
| 70322 | EVB - 2000 / 050 EH-AT+AR | EH20 | 1075 | 2000 | 150 | 18,47 | 535 | 215 | 155 | 100 | 180 | | | 270 | | | 108 | 58 | 316 | 18,60 |
| 1513 | EVB - 2750 / 050 EH-AT | EH27 | 1650 | 2750 | 300 | 24,84 | | | | | | 100 | 13 | 48 | | | | | 127 | 19,80 |
| ** | EVB - 2750 / D.50 EH | | | | | | | | | | | | | | | | | | 234 | 23,00 |
| 1530 | EVB - 2750 / DIN EH * | | | | | | | | | | | | | | | | | | 180 | 24,80 |
| 1531 | EVB - 2750 / NATO EH | | | | | | | | | | | | | | | | | | 119 | 25,80 |
| 1517 | EVB - 3500 / 050 EH-AT | EH35 | 2250 | 3500 | 350 | 30,95 | 580 | 173 | 156 | 120 | 179 | | 273 | | | | | | 109 | 26,20 |
| ** | EVB - 3500 / D.50 EH | | | | | | | | | | | | | | | | | | 243 | 31,00 |
| 1534 | EVB - 3500 / DIN EH * | | | | | | | | | | | | | | | | | | 118 | 32,00 |
| ** | EVB - 3500 / NATO EH | | | | | | | | | | | | | | | | | | | |

NOTAS DE INTERÉS: / NOTES OF INTEREST:

* Acoplamiento de enganche no se puede montar en Bocas BEA 35/50 / It's forbidden to mount this kind of couplings in jaws BEA 35/50

** Para estos enganches consultar central / For these couplings ask our staff.