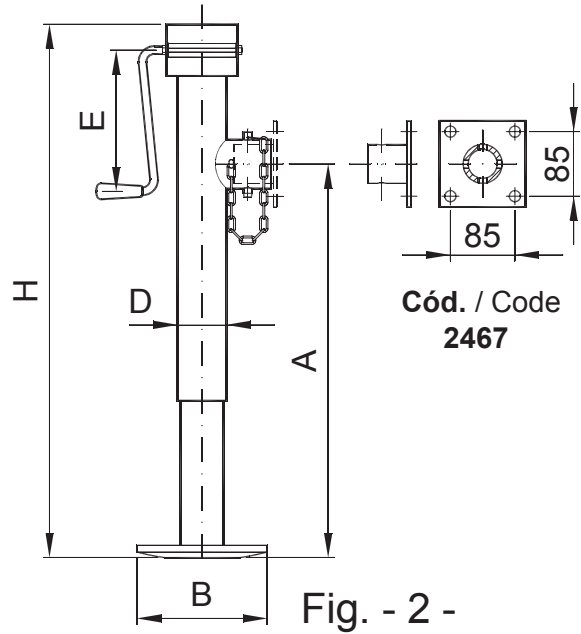
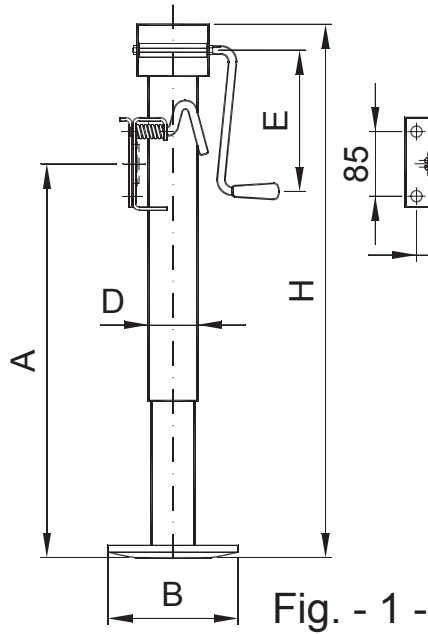


## Apoyos y ruedas jockey abatibles.

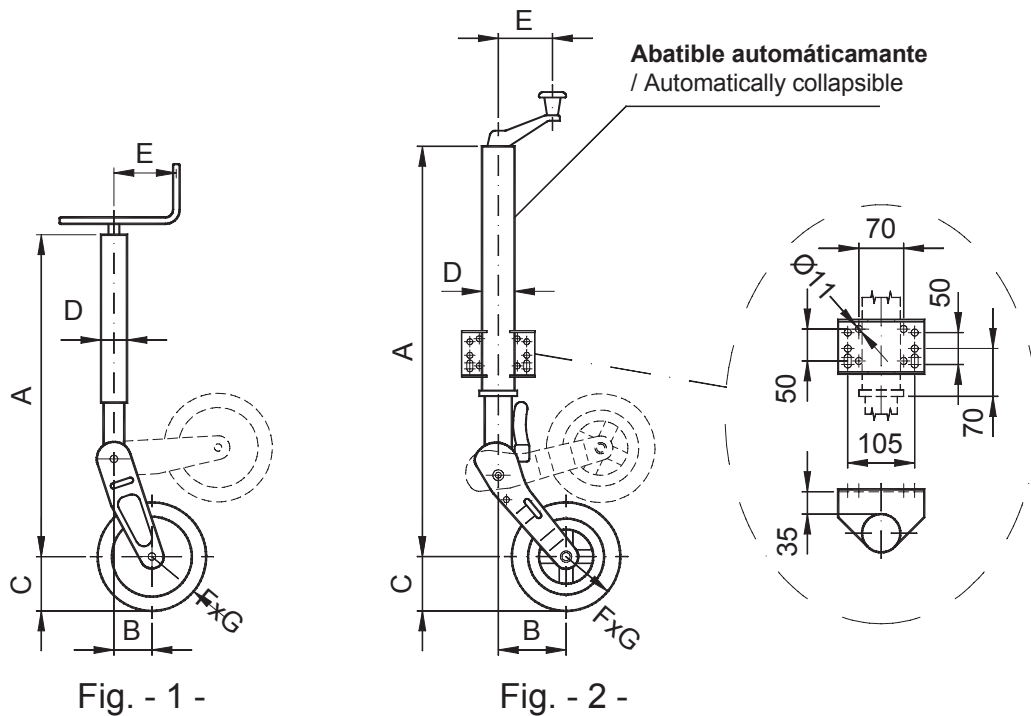
Collapsible supports and jockey wheels.

**VELOCIDAD**



Cód. Code	Referencia/Reference	Referencia de origen Original Ref.	Fig.	Kg	Carrera Stroke	A (MÍN)	B	D	E	H	Peso Aprox. Approx. weight (Kg.)	Brida recomendada Recommended flange	
												Cód.	Ref.
2487	APY.TLC. 57-LF/AB-ML	LF3151	1	1300	380	405	160	057	168	560	7,3	2486	LF/SF 0121
2467	APY.TLC. 57-LT/AB-ML	LF3153	2									2468	LT/ST 0141

AB: Abatible/Collapsible. ML: Manivela Lateral/Lateral handle



Cód. Code	Referencia/Reference	Referencia de origen Original Ref.	Fig.	Kg	Carrera Stroke	A (MÍN)	B	C	D	E	FxG	Peso Aprox. Approx. weight (Kg.)	Brida recomendada Recommended flange	
													Cód.	Ref.
1892	48-200x50-Rda. abatible	S 160	1	400	190	330	70	100	φ48	115	200x50	6,6	1900	BR-48-ST
15577	60-200x60-Rda. abatible	AC296/S	2	300	250	700	125		φ60	100	200x60		9,0	-

**Apoyos fijos y ruedas jockey estándar.**

Fixed supports and standard jockey wheels.

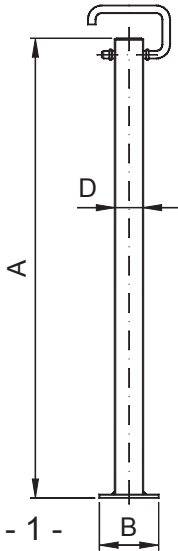


Fig. - 1 -

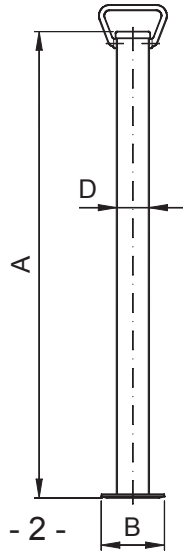


Fig. - 2 -

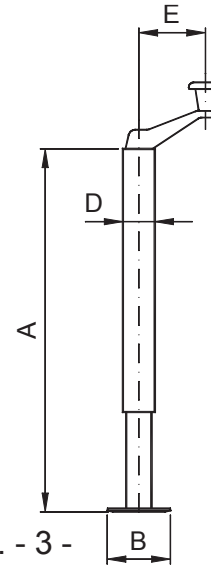
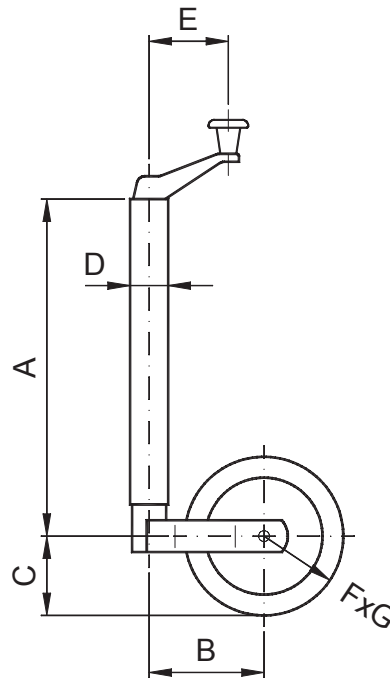


Fig. - 3 -

Cód. Code	Referencia/Reference	Referencia de origen Original Ref.	Fig.	Kg	Carrera Stroke	A (MÍN)	B	D	E	Peso Aprox. Aprox. weight (Kg.)	Brida recomendada Recommended flange	
											Cód.	Ref.
34797	APY. FIJO T-42x490	-	1	-	-	490	95	042	-	2,0	16684	BRB-43
34796	APY. FIJO T-42x690					690				3,2		
15582	APY. FIJO T-48x700	SF 518	2	-	-	700	048	-	2,0	1900	BR-48-ST	
12900	APY. FIJO T-48x400/620	P 242	3			300			220	400	100	3,0



Cód. Code	Referencia/Reference	Referencia de origen Original Ref.	Kg	Carrera Stroke	A (MÍN)	B	C	D	E	FxG	Peso Aprox. Aprox. weight (Kg.)	Brida recomendada Recommended flange	
												Cód.	Ref.
1895	35-170x50-LF	FC-342	75	150	300	115	85	φ35	100	170x35	2,7	1899	BR-35
6569	48-200x50-LM	FC-242	150	220	420	145	120	φ48		200x50	5,0	1900	BR-48-ST
15575	48-245x70-LF	FC-245				185	140		245x70	6,5			
40378	48-260x85-LMN	FC-243				150	260x85		6,0				
15221	60-255x80-LM	FC-260	400	250	430	170	φ35	185	255x80	10,8	15254	BR-60	

LF: Lianta de fibra / Fibreglass rim. LM: Lianta metálica / Metal rim. LMN: Lianta metál. con neumát. / Metal rim with tyre.

## Apoyos fijos y ruedas jockey estándar.

Fixed supports and standard jockey wheels.

VELOCIDAD

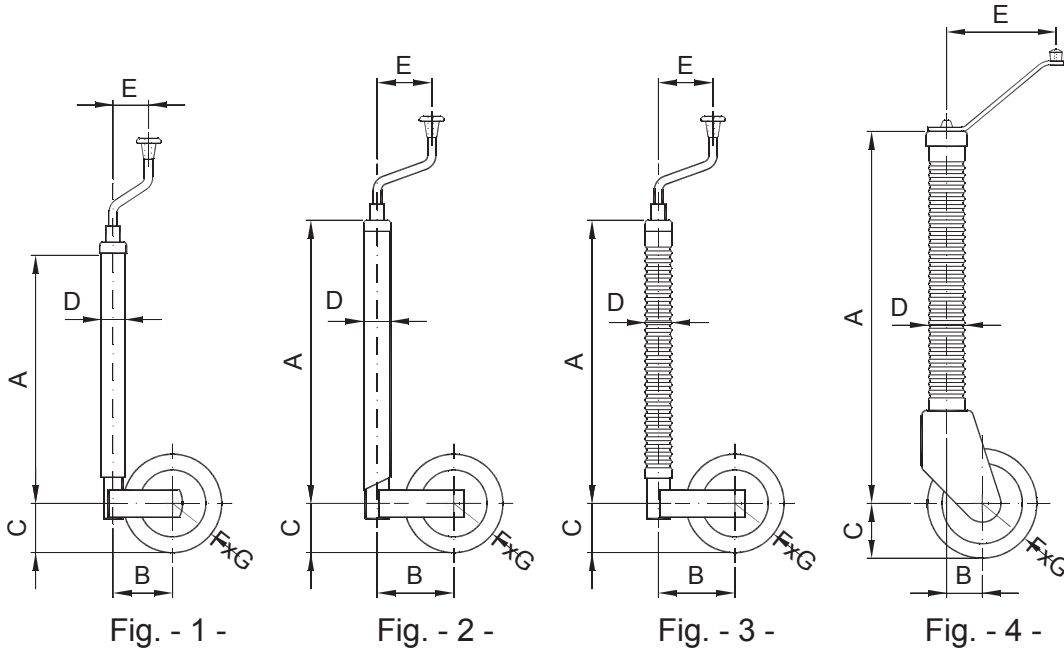


Fig. - 1 -

Fig. - 2 -

Fig. - 3 -

Fig. - 4 -

### RUEDAS JOCKEY "BRD". / "BRD" JOCKEY WHEELS.

Cód. Code	Referencia/Reference	Referencia de origen Original Ref.	Fig.	Kg	Carrera Stroke	A (MÍN)	B	C	D	E	FxG	Peso Aprox. weight (Kg.)	Brida recomendada Recommended flange	
													Cód.	Ref.
16887	43-175x45/B-TL	J43L	1	100	180	450	100	88	φ43	175x45	175x45	5,8	16884	BRB-43
7961	48-175x45/B-TL	J48XL	2		172	490	140					100	6,1	1900/16883
19026	48-200x50/B-TL	J48XLNY	3	350	235	640	140	100	φ48	200x50	200x50	8,6	16883	BRB-48
19027	48-200x50/B-TO	J48HLNY										9,0		
17247	63-200x45/B-TO C/BRIDA	J63B	4	750	265	775	65	φ63	179	200x45	200x45	17,3	17308	BRB-63(*)

TL: Tubo liso - Flat tube / TO: Tubo ondulado - Wave shaped tube  
 (\*): Brida que incorpora la rueda jockey cód. 17247 / Flange mounted in jockey wheel code 17247

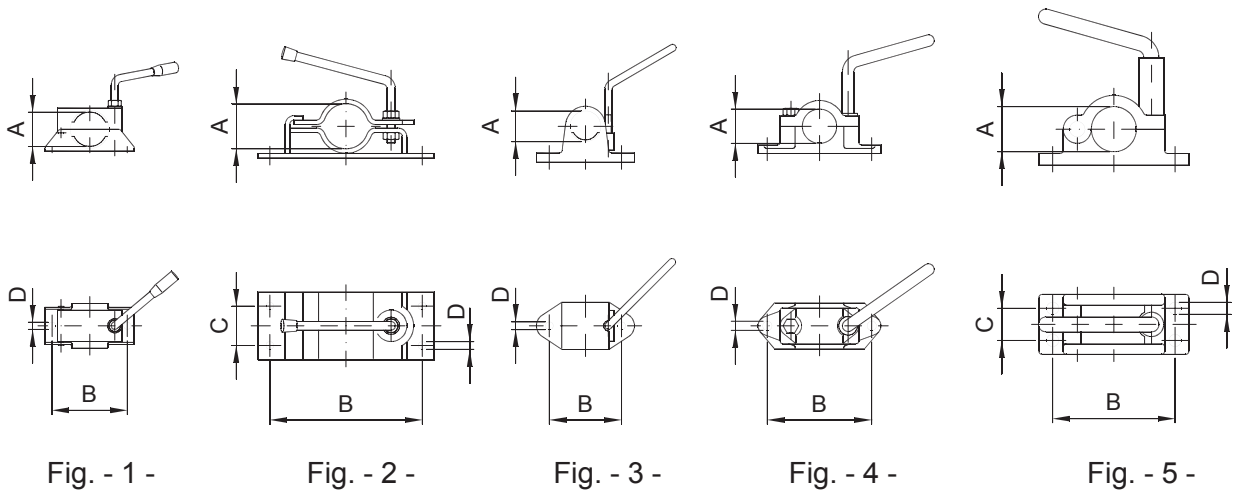


Fig. - 1 -

Fig. - 2 -

Fig. - 3 -

Fig. - 4 -

Fig. - 5 -

### BRIDAS PARA APOYOS Y RUEDAS JOCKEY. / FLANGES FOR SUPPORTS AND JOCKEY WHEELS.

Cód. Code	Referencia/Reference	Referencia de origen Original Ref.	Fig.	A	B	C	D	Nº de agujeros Number of holes	Peso Aprox. weight (Kg.)
1899	BR - 35 - ST	MR 1035	1	φ 35	105	-	φ 10,5	2	0,8
1900	BR - 48 - ST	MR 1001		φ 48					
18105	BR - 60	MR 1065	2	φ 60	213	55	φ 11	4	3,4
15254	BR - 60 - SP	MR 1061							
16884	BRB - 43	B 43	3	φ 43	101	-	φ 63	2	1,7
16883	BRB - 48	B 48 C	4	φ 48	146			2,8	
17308	BRB - 63	B 63	5	φ 60	171	45	φ 63	4	4,3