



Fabricación, Distribución y Oficinas en: *Workshops, Warehouses & Offices at:*  
Cami L'Horteta 1 - Pol. Ind *Cami L'Horteta 1 - Pol. Ind*  
46138 Rafelbunyol - Valencia *46138 Rafelbunyol - Spain*  
Tel. 96 141 40 07 *Tel. +34 96 141 41 46-7*  
Fax. 96 141 21 48 *Fax. +34 96 141 41 48*  
[clientes@reunion-industrial.com](mailto:clientes@reunion-industrial.com) *[info@reunion-industrial.com](mailto:info@reunion-industrial.com)*  
[www.reunion-industrial.com](http://www.reunion-industrial.com)

ALUMINIUM

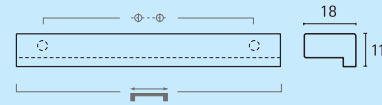
3



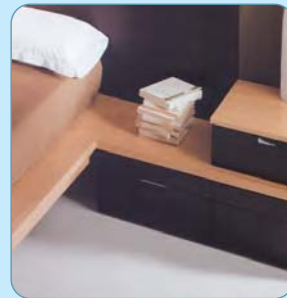


2274

ANm I MA

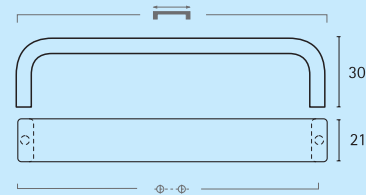


18 x 11 mm
18 mm
32      44
64      88
96      120
128     150
160     190



2265

ANm I MA



21 x 7 mm
30 mm
128     135
160     167
192     199
224     231





2279

ANm I MA



12 x 9 mm	
12 mm	
32	44
64	88
96	120
128	150
160	190
192	320



2275

ANm I MA

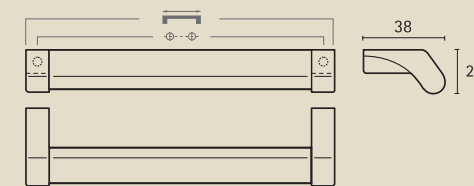


22 x 16 mm	
22 mm	
32	44
64	88
96	120
128	150
160	190
224	270
320	367
448	497



2285

ANm I MA CMI MC



22 x 11 mm	
38 mm	
128	140
160	172
192	204

Pi-029  
Pack 2 u.  
ANm I MA  
CMI MC

CT-230  
ANm I MA  
22 x 11 mm 1000



2286

ANm I MA CMI MC



21 x 13 mm	
40 mm	
128	154
160	184
192	216

Pi-034  
Pack 2 u.  
ANm I MA  
CMI MC

CT-231  
ANm I MA  
21 x 13 mm 1000

2337 ANm I MA



12 x 25 mm
29 mm
160    182
192    214



2338 ANm I MA



10 x 10 mm
28 mm
192    208
320    336



2377 ANm I MA

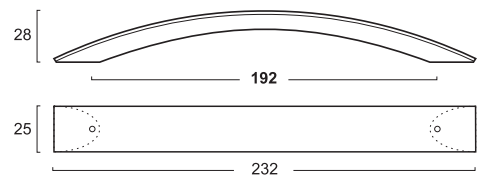


10 x 25 mm
32 mm
192    208
224    240

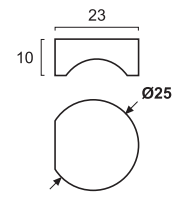
ANm I MA  
Anodizado mate | Matt Anodized



2434 ANm I MA



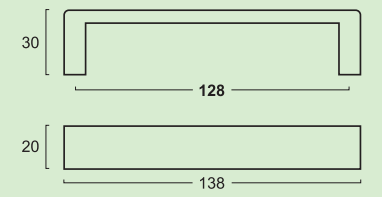
2425 ANm I MA



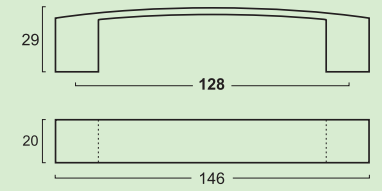
8

9

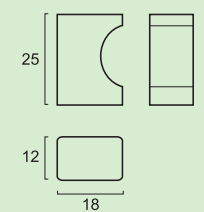
1528 ANm I MA



1529 ANm I MA



2419 ANm I MA

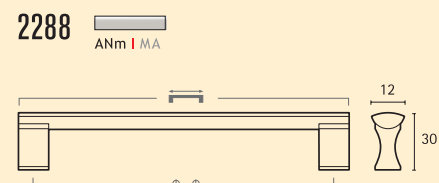


ANm I MA Anodizado mate | Matt Anodized

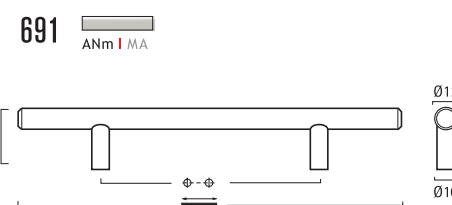
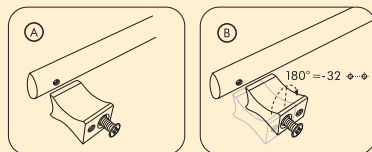
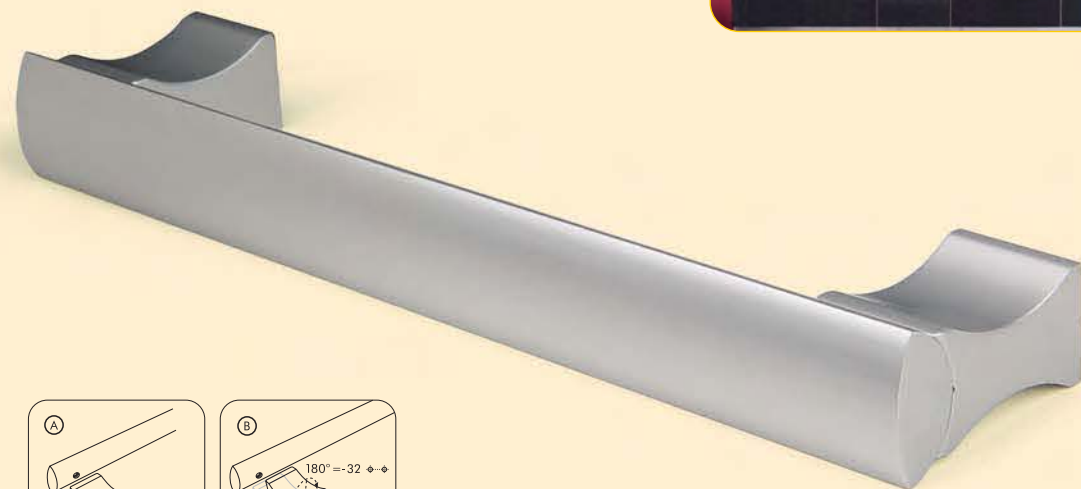




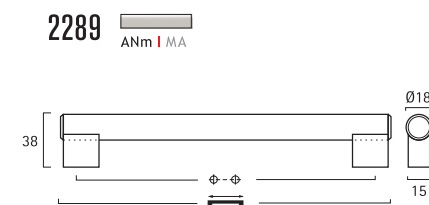
	12 x 9 mm
	30 mm
<b>128</b>	138
<b>160</b>	170
<b>192</b>	202
<b>224</b>	234
<b>320</b>	330
<b>448</b>	458



	12 x 9 mm
	30 mm
<b>128</b>	138
<b>160</b>	170
<b>192</b>	202
<b>224</b>	234
<b>320</b>	330
<b>448</b>	458

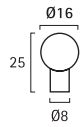


	Ø12
	32 mm
<b>128</b>	228
<b>192</b>	292
<b>320</b>	420

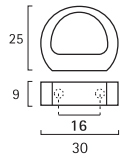


	Ø18
	38 mm
<b>128</b>	164
<b>192</b>	228
<b>224</b>	260
<b>320</b>	356
<b>448</b>	484
<b>632</b>	668

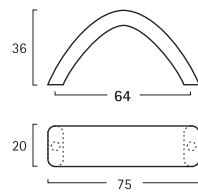
6203 ANm I MA



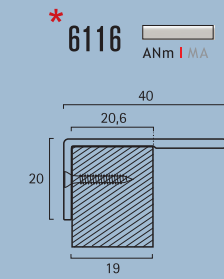
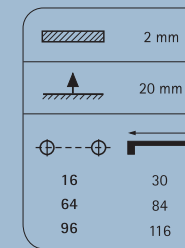
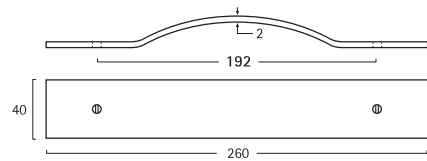
2290 ANm I MA



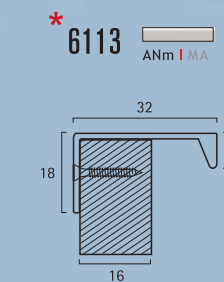
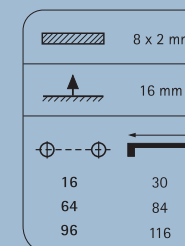
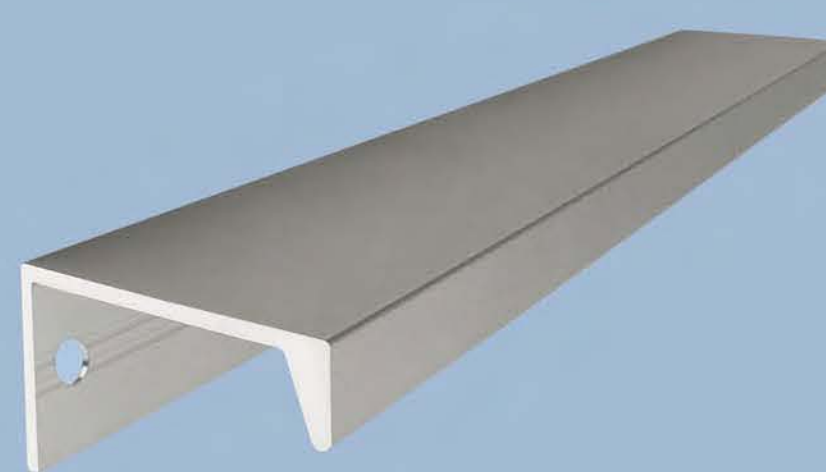
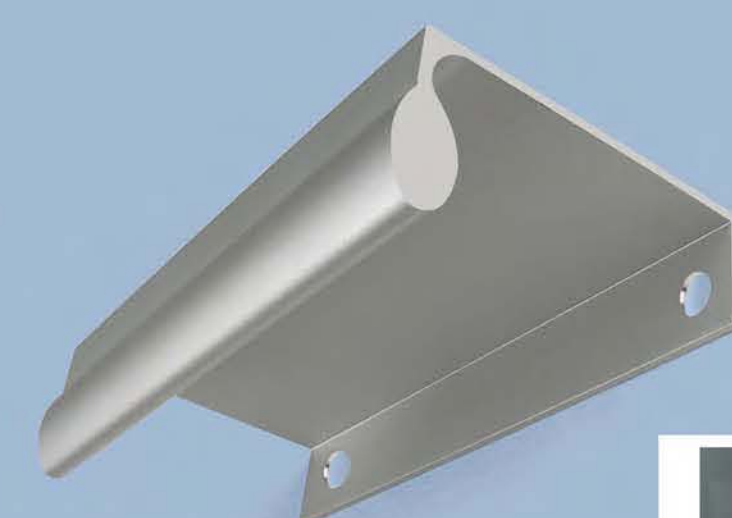
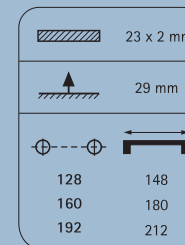
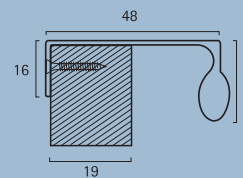
6201 ANm I MA



2291 ANm I MA



\* 6117 ANm I MA



CN I MC Cromo mate I Matt Chrome  
ANm I MA Anodizado mate I Matt Anodized



\* Se pueden suministrar en los anchos de todas las puertas de cocina.  
Available in any cabinet-door customized length.

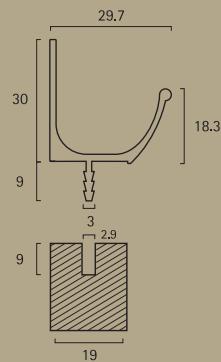
	300	350	400	450	500	600	900	1200
	298	348	398	448	498	598	898	1198



AL

Todos los tiradores se fabrican por extrusión de aleación de aluminio y acabado en anodizado mate.  
 All handles are manufactured by mechanizing aluminium-alloy profiles, and they are coloured by anodizing methods

6115 ANm I MA



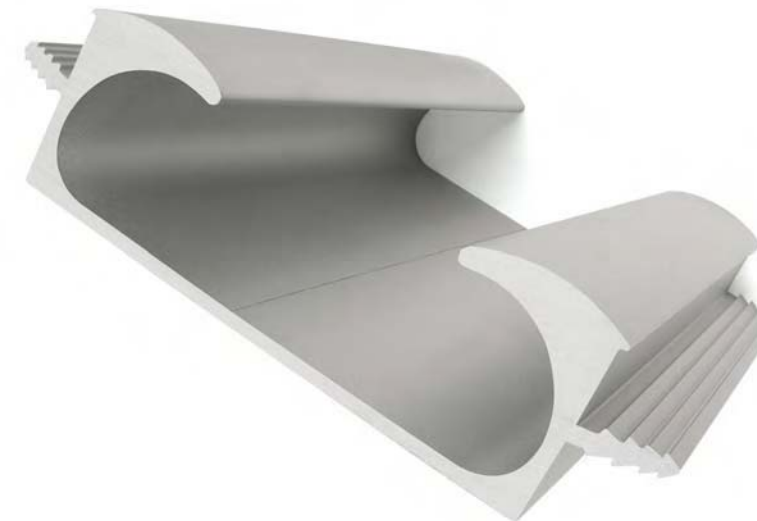
6115: Tiradores embutidos para puertas  
 Cast-in handles for cabinet doors

	300	350	400	450	500	600	900	1200
	298	348	398	448	498	598	898	1198

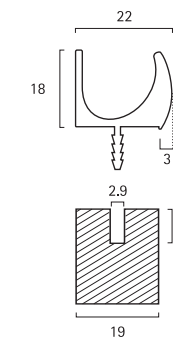


Serie 6119: Tiradores embutidos para puertas  
 Cast-in handles for cabinet doors

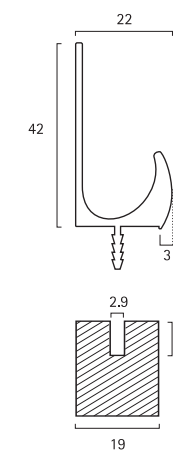
	300	350	400	450	500	600	900	1200
	298	348	398	448	498	598	898	1198



6119.A ANm I MA



6119.B ANm I MA



6119.C ANm I MA

