

# TOGGLE PRESSES

## Pneumatic toggle presses APK series

The optimum transmission ratios of the toggle press produce high forces at the end of the stroke, ensuring low air consumption. Thanks to the resultant low energy consumption, mäder pneumatic toggle presses are an economical means of production not only at the time of purchase, but also in the long term.

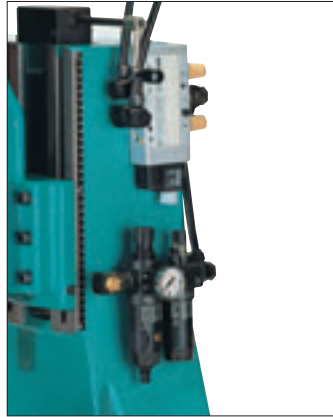
All pneumatic toggle presses can be supplied with mäder standard controls (see page 23) or with controls made to customers' specification.

### Further quality features:

- factory-set bottom dead centre (BDC)
- simple height adjustment of the press head using a bevel gear
- side-mounted measuring strip for rapid repetition of settings when changing tools
- virtually maintenance-free double-action cylinder
- low noise: under 75 dBA

### The detail shows:

- Measuring strip
- Crank handle of the bevel gear for infinitely variable height adjustment of the press head
- Pneumatic system, valve and service unit with air filter, oiler and pressure reducer (only in versions supplied with controls)

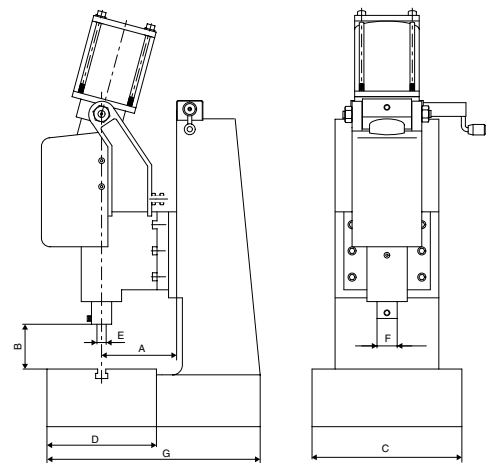


APK 2L

Type		APK 2 L	APK 3 L
Capacity at 6 bar		kN	5
		kp	500
Working stroke		mm	35
			40
Throat	A	mm	80
Daylight	B	mm	62 - 192
Daylight with DP	B	mm	46 - 176
Table size	C x D	mm	155 x 115
T-slot width similar to DIN 650		mm	12
Ram bore Ø x depth	E	mm	10 <sup>H7</sup> x 25
Ram Ø	F	mm	24
Port size			R 1/4"
Air consumption/cm cyl. stroke	L		0.26
Space requirement	C x G	mm	155 x 220
Weight		kg	approx. 22

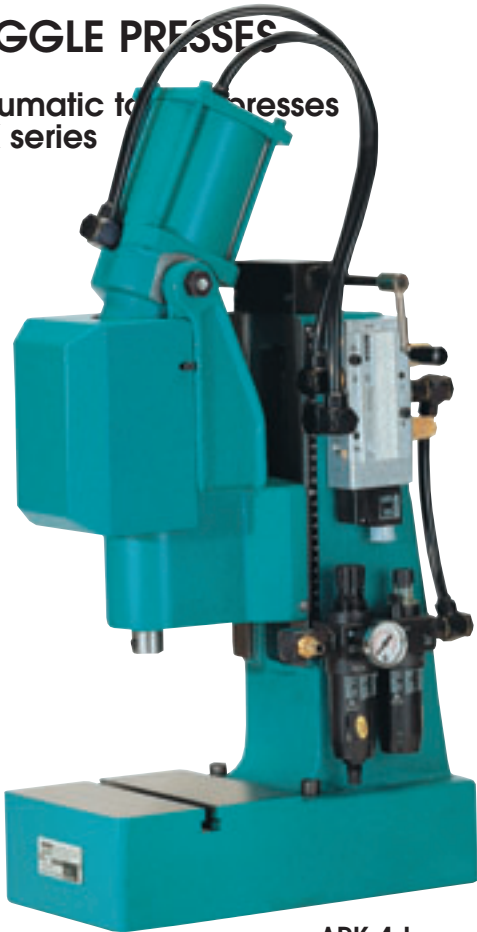
Extras (see Page 3)	Please indicate with order
Precision ram adjustment	DP

Valve and service unit only in versions supplied with controls

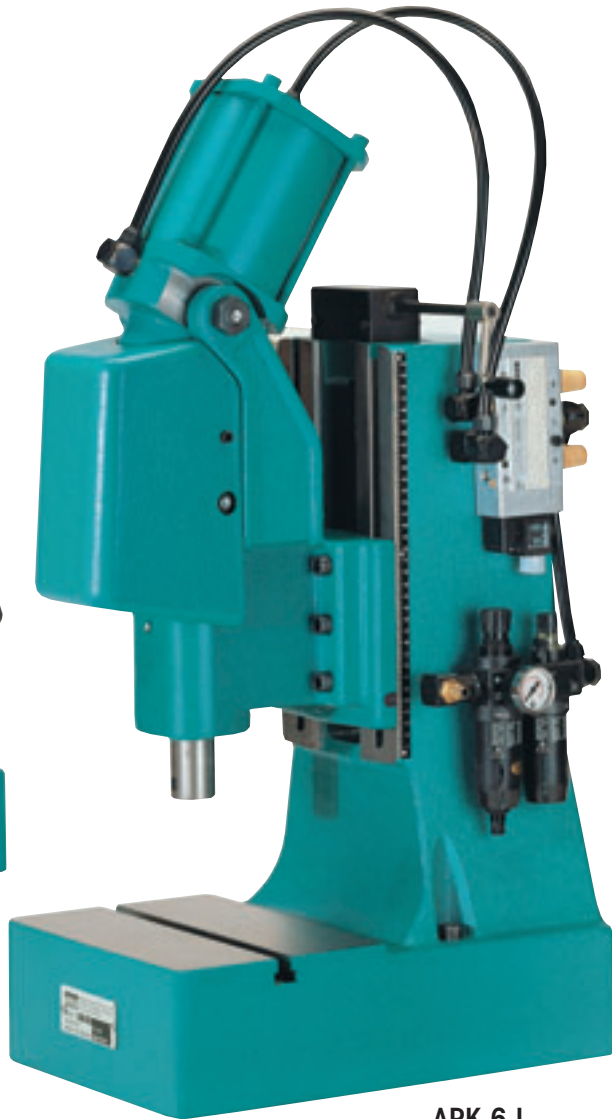


# TOGGLE PRESSES

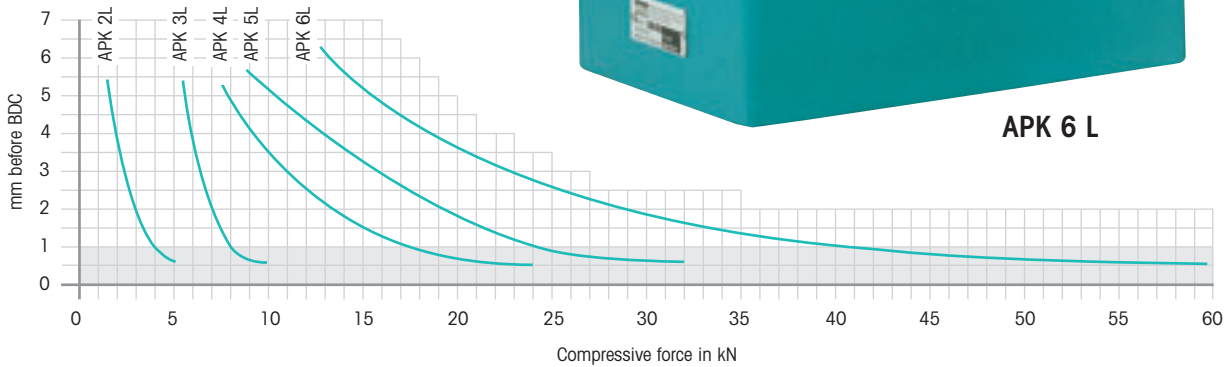
Pneumatic toggle presses  
APK series



APK 4 L



APK 6 L



Type		APK 4 L	APK 5 L	APK 6 L	XL-APK 4 L	XL-APK 5 L	XL-APK 6 L	
Capacity at 6 bar	kN	24	32	60	24	32	60	
	kp	2400	3200	6000	2400	3200	6000	
Working stroke	mm	40	40	40	40	40	40	
Throat	A	mm	130	130	300	300	300	
Daylight	B	mm	74 - 272	74 - 272	130 - 280	130 - 280	130 - 230	
Table size	CxD	mm	200 x 190	200 x 190	200 x 220	200 x 220	310 x 220	
T-slot width similar to DIN 650		mm	14	14	14	14	14	
Ram bore Ø x depth	E	mm	12 <sup>H7</sup> x 30	12 <sup>H7</sup> x 30	12 <sup>H7</sup> x 30	12 <sup>H7</sup> x 30	20 <sup>H7</sup> x 34	
Ram Ø	F	mm	30	30	30	30	40	
Port size			R 3/8"	R 3/8"	R 3/8"	R 3/8"	R 3/8"	
Air consumption/cm cyl. stroke	l		1.05	1.05	1.05	1.05	1.65	
Space requirement	CxG	mm	200 x 385	200 x 385	200 x 550	200 x 550	310 x 580	
Weight	kg		approx. 72	approx. 80	approx. 140	approx. 196	approx. 204	approx. 250

Valve and service unit only in versions supplied with controls