

# CONECTORES SERIE METALICA

C. SETRONIC S.L.

## CONECTORES BNC



| CODIGO | DESCRIPCIÓN  | COLOR  | UNIDADES |
|--------|--------------|--------|----------|
| 5000   | RG-58-50 Ohm | NIQUEL | 25       |
| 5001   | RG-59-75 Ohm | NIQUEL | 25       |

Conectores BNC para crimpar con casquillo para la sujeción del cable.  
BNC male crimp type.

C. SETRONIC S.L.

## CAPUCHON BNC

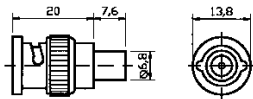


| CODIGO | DESCRIPCIÓN     | COLOR | UNIDADES |
|--------|-----------------|-------|----------|
| 5002   | Aislante de PVC | NEGRO | 25       |

Capuchón aislante de PVC para el modelo de BNC de crimpar 5001 y 5011 75 Ohm.  
Isolated boot for RG-59.

C. SETRONIC S.L.

## CONECTORES BNC

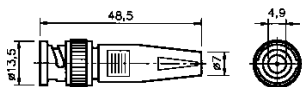


| CODIGO | DESCRIPCIÓN  | COLOR  | UNIDADES |
|--------|--------------|--------|----------|
| 5010   | RG-58-50 Ohm | NIQUEL | 25       |
| 5011   | RG-59-75 Ohm | NIQUEL | 25       |

Conectores BNC para crimpar con casquillo para la inyección de latiguillos.  
BNC male molded type.

C. SETRONIC S.L.

## CONECTORES BNC

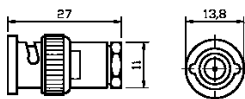


| CODIGO | DESCRIPCIÓN      | COLOR | UNIDADES |
|--------|------------------|-------|----------|
| 5020   | Macho c/capuchón | NEGRO | 25       |

Conectores BNC conexión mediante tornillo, incluye capuchón de PVC.  
BNC male solderless type.

C. SETRONIC S.L.

## CONECTORES BNC



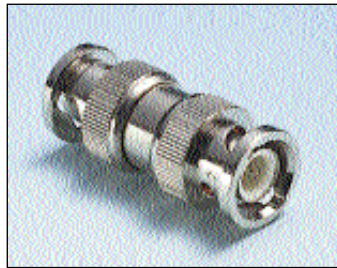
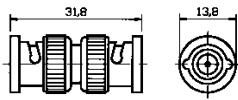
| CODIGO | DESCRIPCIÓN  | COLOR  | UNIDADES |
|--------|--------------|--------|----------|
| 5030   | RG-58-50 Ohm | NIQUEL | 25       |
| 5031   | RG-59-75 Ohm | NIQUEL | 25       |

Conectores BNC para soldar la sujeción del cable mediante tuerca.  
BNC male clamp type.

# CONECTORES SERIE METALICA

C. SETRONIC S.L.

## ADAPTADORES BNC

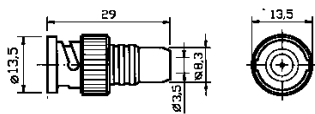


| CODIGO | DESCRIPCIÓN     | COLOR  | UNIDADES |
|--------|-----------------|--------|----------|
| 5040   | BNC doble macho | NIQUEL | 10       |

Conectores adaptadores de Doble macho BNC, compacto.  
BNC Double male straight adaptor.

C. SETRONIC S.L.

## ADAPTADORES BNC

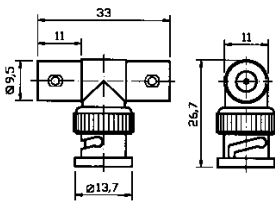


| CODIGO | DESCRIPCIÓN   | COLOR  | UNIDADES |
|--------|---------------|--------|----------|
| 5050   | BNC/M. RCA/H. | NIQUEL | 25       |

Convierte un conector BNC macho en un conector RCA hembra.  
BNC male to RCA female adaptor.

C. SETRONIC S.L.

## ADAPTADORES BNC

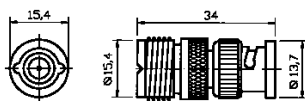


| CODIGO | DESCRIPCIÓN     | COLOR  | UNIDADES |
|--------|-----------------|--------|----------|
| 5060   | BNC/M. 2 BNC/H. | NIQUEL | 10       |

Convierte un conector BNC macho en dos conectores BNC hembra.  
T-BNC male to double female adaptor.

C. SETRONIC S.L.

## ADAPTADORES BNC

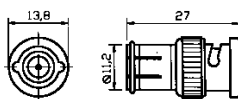


| CODIGO | DESCRIPCIÓN   | COLOR  | UNIDADES |
|--------|---------------|--------|----------|
| 5070   | BNC/M. UHF/H. | NIQUEL | 10       |

Convierte un conector BNC macho en un conector UHF hembra.  
BNC male to UHF female adaptor.

C. SETRONIC S.L.

## ADAPTADORES BNC



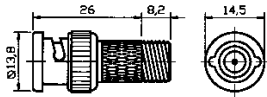
| CODIGO | DESCRIPCIÓN   | COLOR  | UNIDADES |
|--------|---------------|--------|----------|
| 5080   | BNC/M. PAL/H. | NIQUEL | 10       |

Convierte un conector BNC macho en un conector PAL 9.5mm hembra  
BNC male to PAL female adaptor.

# CONECTORES SERIE METALICA

C. SETRONIC S.L.

## ADAPTADORES BNC



| CODIGO | DESCRIPCIÓN | COLOR  | UNIDADES |
|--------|-------------|--------|----------|
| 5090   | BNC/M. F/H. | NIQUEL | 10       |

Convierte un conector BNC macho en un conector F hembra.  
BNC male to F female adaptor.

C. SETRONIC S.L.

## TERMINADORES F

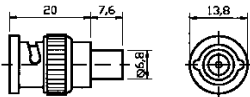


| CODIGO | DESCRIPCIÓN    | COLOR  | UNIDADES |
|--------|----------------|--------|----------|
| 5095   | Tapón F 75 Ohm | NIQUEL | 25       |

Final de 75 Ohm adaptable a los conectores tipo F hembra.  
F male dummy load 75 Ohm terminator.

C. SETRONIC S.L.

## TERMINADORES BNC

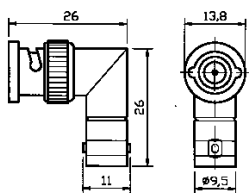


| CODIGO | DESCRIPCIÓN      | COLOR  | UNIDADES |
|--------|------------------|--------|----------|
| 5100   | Tapón BNC 50 Ohm | NIQUEL | 25       |
| 5101   | Tapón BNC 75 Ohm | NIQUEL | 25       |

Final de BNC para 50 y 75 Ohms.  
BNC male terminator.

C. SETRONIC S.L.

## ADAPTADORES BNC



| CODIGO | DESCRIPCIÓN   | COLOR  | UNIDADES |
|--------|---------------|--------|----------|
| 5110   | BNC/M. BNC/H. | NIQUEL | 10       |

Convierte un conector BNC macho en un conector BNC hembra acodado.  
Right angle BNC male to female adaptor.

C. SETRONIC S.L.

## ADAPTADORES BNC



| CODIGO | DESCRIPCIÓN        | COLOR | UNIDADES |
|--------|--------------------|-------|----------|
| 5120   | Macho 2 bornas 4mm | NE/RO | 10       |

Convierte un conector BNC macho en dos bornas de 4mm, para uso en osciloscopios u otros instrumentos de medida.  
BNC male to double binding post adaptor.

# CONECTORES SERIE METALICA

C. SETRONIC S.L.

## CONECTORES BNC

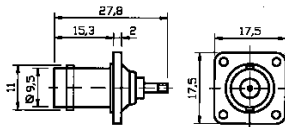


Conector hembra aérea BNC para crimpar.  
BNC female crimp. Type

| CODIGO | DESCRIPCIÓN     | COLOR  | UNIDADES |
|--------|-----------------|--------|----------|
| 5135   | H. RG-58-50 Ohm | NIQUEL | 10       |
| 5136   | H. RG-59-75 Ohm | NIQUEL | 10       |

C. SETRONIC S.L.

## CONECTORES BNC

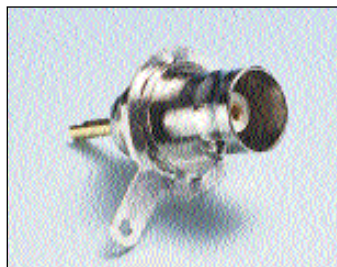
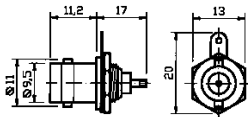


| CODIGO | DESCRIPCIÓN   | COLOR  | UNIDADES |
|--------|---------------|--------|----------|
| 5140   | Hembra chasis | NIQUEL | 10       |

Conector BNC hembra chasis, sujeción con cuatro tornillos.  
BNC female chassis.

C. SETRONIC S.L.

## CONECTORES BNC

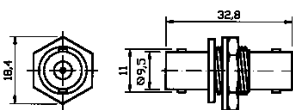


| CODIGO | DESCRIPCIÓN     | COLOR  | UNIDADES |
|--------|-----------------|--------|----------|
| 5150   | Hembra c/tuerca | NIQUEL | 10       |

Conector BNC hembra chasis, sujeción con tuerca central.  
BNC female chassis mount.

C. SETRONIC S.L.

## CONECTORES BNC

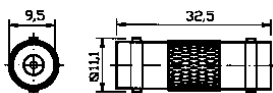


| CODIGO | DESCRIPCIÓN        | COLOR  | UNIDADES |
|--------|--------------------|--------|----------|
| 5160   | 2 hembras c/tuerca | NIQUEL | 10       |

Conector BNC doble hembra con tuerca, para sujeción a chasis.  
Double BNC female with nut.

C. SETRONIC S.L.

## CONECTORES BNC



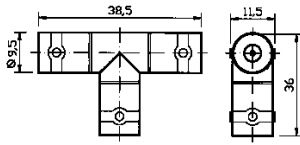
| CODIGO | DESCRIPCIÓN   | COLOR  | UNIDADES |
|--------|---------------|--------|----------|
| 5170   | 2 hembras BNC | NIQUEL | 10       |

Conector BNC doble hembra aérea.  
BNC double female.

# CONECTORES SERIE METALICA

C. SETRONIC S.L.

## CONECTORES BNC

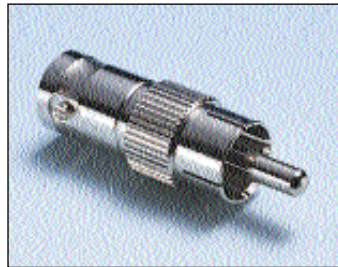
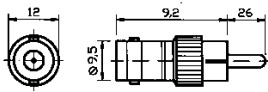


| CODIGO | DESCRIPCIÓN   | COLOR  | UNIDADES |
|--------|---------------|--------|----------|
| 5180   | 3 Hembras BNC | NIQUEL | 10       |

Conector BNC triple hembra.  
BNC three female.

C. SETRONIC S.L.

## ADAPTADORES BNC



| CODIGO | DESCRIPCIÓN   | COLOR  | UNIDADES |
|--------|---------------|--------|----------|
| 5190   | H./BNC M./RCA | NIQUEL | 25       |

Convierte un conector hembra BNC en un conector macho RCA.  
BNC female to RCA male adaptor.

C. SETRONIC S.L.

## CONECTORES TNC

Conector TNC macho para soldar sujeción del cable con tuerca, para RG-58  
TNC male clamp type.



| CODIGO | DESCRIPCIÓN    | COLOR  | UNIDADES |
|--------|----------------|--------|----------|
| 5200   | Macho c/tuerca | NIQUEL | 10       |

C. SETRONIC S.L.

## ADAPTADORES TNC

Convierte un conector macho TNC en un conector hembra UHF.  
TNC male to UHF female adaptor.



| CODIGO | DESCRIPCIÓN   | COLOR  | UNIDADES |
|--------|---------------|--------|----------|
| 5210   | TNC/M. UHF/H. | NIQUEL | 10       |

C. SETRONIC S.L.

## ADAPTADORES TNC

Convierte un conector macho TNC en un conector hembra F.  
TNC male to F female adaptor.



| CODIGO | DESCRIPCIÓN | COLOR  | UNIDADES |
|--------|-------------|--------|----------|
| 5220   | TNC/M. F/H. | NIQUEL | 10       |

# CONECTORES SERIE METALICA

C. SETRONIC S.L.

## CONECTORES TNC



Conector hembra TNC para chasis con tuerca.  
TNC female chassis mount.

| CODIGO | DESCRIPCIÓN   | COLOR  | UNIDADES |
|--------|---------------|--------|----------|
| 5230   | Hembra chasis | NIQUEL | 10       |

C. SETRONIC S.L.

## CONECTORES TNC

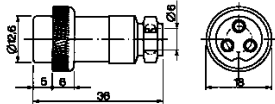


Conector doble hembra TNC.  
TNC double female.

| CODIGO | DESCRIPCIÓN  | COLOR  | UNIDADES |
|--------|--------------|--------|----------|
| 5240   | Doble hembra | NIQUEL | 10       |

C. SETRONIC S.L.

## CONECTORES MULTICONTACTO

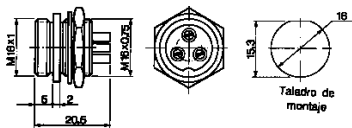


| CODIGO | DESCRIPCIÓN        | COLOR  | UNIDADES |
|--------|--------------------|--------|----------|
| 5250   | Hembra 2 contactos | NIQUEL | 10       |
| 5251   | Hembra 3 contactos | NIQUEL | 10       |
| 5252   | Hembra 4 contactos | NIQUEL | 25       |
| 5253   | Hembra 5 contactos | NIQUEL | 10       |
| 5254   | Hembra 6 contactos | NIQUEL | 10       |
| 5256   | Hembra 8 contactos | NIQUEL | 10       |

Conectores multitoma hembra aérea tipo micro, con terminales soldables y anclaje de bloqueo.  
Mic female connectors.

C. SETRONIC S.L.

## CONECTORES MULTICONTACTO

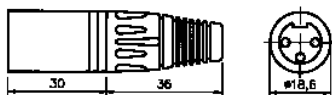


| CODIGO | DESCRIPCIÓN       | COLOR  | UNIDADES |
|--------|-------------------|--------|----------|
| 5260   | Macho 2 contactos | NIQUEL | 10       |
| 5261   | Macho 3 contactos | NIQUEL | 10       |
| 5262   | Macho 4 contactos | NIQUEL | 25       |
| 5263   | Macho 5 contactos | NIQUEL | 10       |
| 5264   | Macho 6 contactos | NIQUEL | 10       |
| 5266   | Macho 8 contactos | NIQUEL | 10       |

Conectores multitoma macho chasis con tuerca tipo micro, con terminales soldables.  
Mic male connectors chassis mount.

C. SETRONIC S.L.

## CONECTORES DE AUDIO XLR



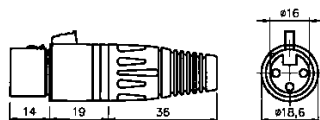
| CODIGO | DESCRIPCIÓN        | COLOR | UNIDADES |
|--------|--------------------|-------|----------|
| 5270   | M. aéreo 3 contac. | NEGRO | 25       |

Conector XLR macho aéreo tipo NEUTRIK, terminales soldables, pasacable incorporado.  
Mic. male neutrik type.

# CONECTORES SERIE METALICA

C. SETRONIC S.L.

## CONECTORES DE AUDIO XLR

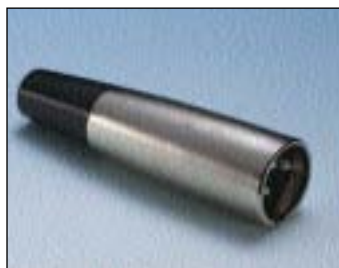


| CODIGO | DESCRIPCIÓN        | COLOR | UNIDADES |
|--------|--------------------|-------|----------|
| 5280   | H. aéreo 3 contac. | NEGRO | 25       |

Conector XLR hembra aérea tipo NEUTRIK, terminales soldables, pasacable incorporado. Mic. female neutrik type.

C. SETRONIC S.L.

## CONECTORES DE AUDIO XLR



| CODIGO | DESCRIPCIÓN        | COLOR  | UNIDADES |
|--------|--------------------|--------|----------|
| 5290   | M. aéreo 3 contac. | NIQUEL | 10       |

Conector XLR macho aéreo tipo CANON, terminales soldables, pasacable incorporado. 3 pin mic. male connector.

C. SETRONIC S.L.

## CONECTORES DE AUDIO XLR

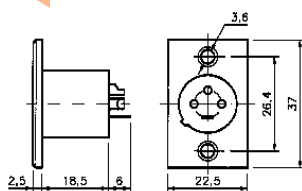


| CODIGO | DESCRIPCIÓN        | COLOR  | UNIDADES |
|--------|--------------------|--------|----------|
| 5300   | H. aéreo 3 contac. | NIQUEL | 10       |

Conector XLR hembra aérea tipo CANON, terminales soldables, pasacable incorporado. 3 pin mic. female connector.

C. SETRONIC S.L.

## CONECTORES DE AUDIO XLR

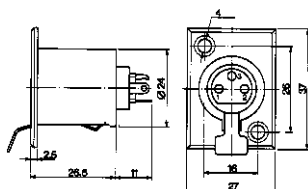


| CODIGO | DESCRIPCIÓN         | COLOR  | UNIDADES |
|--------|---------------------|--------|----------|
| 5310   | M. chasis 3 contac. | NIQUEL | 10       |

Conector XLR macho chasis tipo CANON, sujeción con tornillos, terminales soldables. 3 pin male chassis mount.

C. SETRONIC S.L.

## CONECTORES DE AUDIO XLR



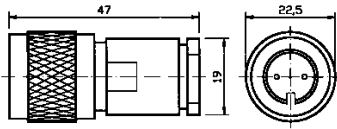
| CODIGO | DESCRIPCIÓN         | COLOR  | UNIDADES |
|--------|---------------------|--------|----------|
| 5320   | H. chasis 3 contac. | NIQUEL | 10       |

Conector XLR hembra chasis tipo CANON, sujeción con tornillos, terminales soldables. 3 pin female chassis mount.

# CONECTORES SERIE METALICA

C. SETRONIC S.L.

## CONECTORES TWINAXIALES



| CODIGO | DESCRIPCIÓN    | COLOR  | UNIDADES |
|--------|----------------|--------|----------|
| 5350   | Macho c/tuerca | NIQUEL | 10       |

Conector Twinaxial macho aéreo con tuerca para cable RG-58 50 Ohm.  
Twinaxial male with nut.

C. SETRONIC S.L.

## ADAPTADORES TWINAXIALES

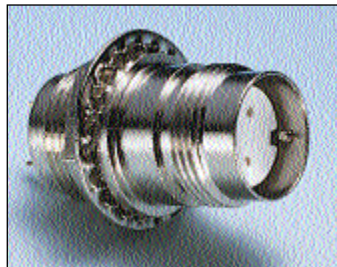
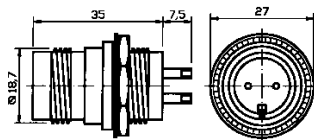
Convierte un conector Twinaxial macho a dos conectores Twinaxiales hembra.  
T - Twinaxial male to double female.



| CODIGO | DESCRIPCIÓN     | COLOR  | UNIDADES |
|--------|-----------------|--------|----------|
| 5360   | Macho 2 Hembras | NIQUEL | 10       |

C. SETRONIC S.L.

## CONECTORES TWINAXIALES

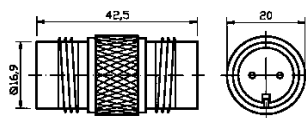


| CODIGO | DESCRIPCIÓN        | COLOR  | UNIDADES |
|--------|--------------------|--------|----------|
| 5370   | H. chasis c/tuerca | NIQUEL | 10       |

Conector Twinaxial hembra chasis con tuerca, terminales soldables.  
Twinaxial female chassis mount.

C. SETRONIC S.L.

## CONECTORES TWINAXIALES



| CODIGO | DESCRIPCIÓN  | COLOR  | UNIDADES |
|--------|--------------|--------|----------|
| 5380   | Doble hembra | NIQUEL | 10       |

Conector Twinaxial doble hembra recta.  
Double Twinaxial female.

C. SETRONIC S.L.

## CONECTORES TWINAXIALES

Conector Twinaxial triple hembra.  
Twinaxial three female.



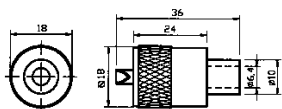
| CODIGO | DESCRIPCIÓN   | COLOR  | UNIDADES |
|--------|---------------|--------|----------|
| 5390   | Triple hembra | NIQUEL | 10       |



# CONECTORES SERIE METALICA

C. SETRONIC S.L.

## CONECTORES UHF

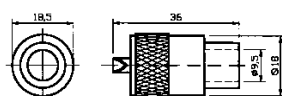


| CODIGO | DESCRIPCIÓN      | COLOR  | UNIDADES |
|--------|------------------|--------|----------|
| 5400   | M. RG-58-50 Ohm. | NIQUEL | 25       |

Conector UHF PL-259 macho aéreo, para cable RG-58. Conexión por torsión. Terminal soldable. UHF male connector twist-on for RG-58.

C. SETRONIC S.L.

## CONECTORES UHF

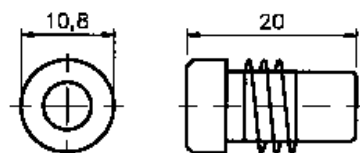


| CODIGO | DESCRIPCIÓN  | COLOR  | UNIDADES |
|--------|--------------|--------|----------|
| 5410   | Macho RG-213 | NIQUEL | 25       |

Conector UHF PL-259 macho aéreo, para cable RG-213. Conexión por torsión. Terminal soldable. Se puede convertir en RG-58 mediante el reductor 5420 y en RG-59 mediante el reductor 5421. UHF male connector twist-on for RG-213.

C. SETRONIC S.L.

## REDUCTORES UHF



| CODIGO | DESCRIPCIÓN   | COLOR  | UNIDADES |
|--------|---------------|--------|----------|
| 5420   | RG-58-50 Ohm  | NIQUEL | 10       |
| 5421   | RG-59-75 Ohm. | NIQUEL | 10       |

Adaptable al conector UHF PL-259 modelo 5410 para reducir el tipo de cable a utilizar RG-58 o RG-59. Adapter for RG-58 and RG-59.

C. SETRONIC S.L.

## CONECTORES UHF

Conector UHF PL-259 macho aéreo, para crimpar con cable RG-58 50 Ohm. UHF male crimp. Type.



| CODIGO | DESCRIPCIÓN        | COLOR  | UNIDADES |
|--------|--------------------|--------|----------|
| 5430   | RG-58 para Crimpar | NIQUEL | 10       |

C. SETRONIC S.L.

## ADAPTADORES UHF

Convierte un conector UHF macho en un conector BNC hembra. UHF male to BNC females.

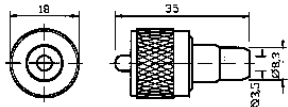


| CODIGO | DESCRIPCIÓN   | COLOR  | UNIDADES |
|--------|---------------|--------|----------|
| 5440   | UHF/M. BNC/H. | NIQUEL | 10       |

# CONECTORES SERIE METALICA

C. SETRONIC S.L.

## ADAPTADORES UHF

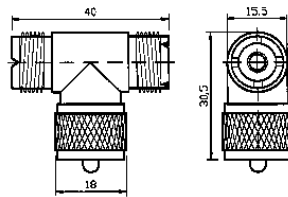


| CODIGO | DESCRIPCIÓN   | COLOR  | UNIDADES |
|--------|---------------|--------|----------|
| 5450   | UHF/M. RCA/H. | NIQUEL | 10       |

Convierte un conector UHF macho en un conector RCA hembra.  
UHF male to RCA female.

C. SETRONIC S.L.

## ADAPTADORES UHF

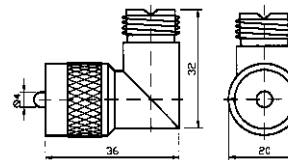


| CODIGO | DESCRIPCIÓN    | COLOR  | UNIDADES |
|--------|----------------|--------|----------|
| 5460   | UHF/M. 2UHF/H. | NIQUEL | 10       |

Convierte un conector UHF macho en dos conectores UHF hembra.  
UHF male to double female.

C. SETRONIC S.L.

## ADAPTADORES UHF

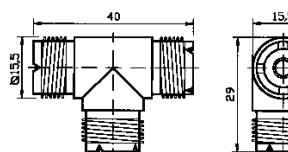


| CODIGO | DESCRIPCIÓN  | COLOR  | UNIDADES |
|--------|--------------|--------|----------|
| 5470   | UHF M/H codo | NIQUEL | 10       |

Convierte un conector UHF macho en un conector UHF hembra en codo de 90°.  
Rigth angle UHF male to female.

C. SETRONIC S.L.

## ADAPTADORES UHF

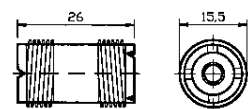


| CODIGO | DESCRIPCIÓN   | COLOR  | UNIDADES |
|--------|---------------|--------|----------|
| 5480   | UHF 3 hembras | NIQUEL | 10       |

Conector UHF tres hembras.  
UHF three female.

C. SETRONIC S.L.

## CONECTORES UHF



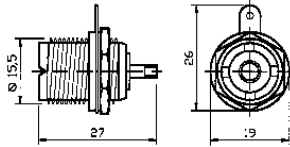
| CODIGO | DESCRIPCIÓN      | COLOR  | UNIDADES |
|--------|------------------|--------|----------|
| 5490   | UHF doble hembra | NIQUEL | 10       |

Conector UHF doble hembra recta.  
UHF double female.

# CONECTORES SERIE METALICA

C. SETRONIC S.L.

## CONECTORES UHF

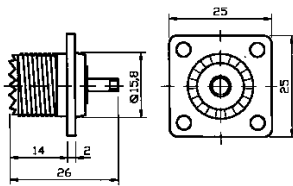


| CODIGO | DESCRIPCIÓN        | COLOR  | UNIDADES |
|--------|--------------------|--------|----------|
| 5500   | H. chasis c/tuerca | NIQUEL | 10       |

Conector UHF hembra chasis con tuerca, terminales soldables.  
UHF female chassis mount.

C. SETRONIC S.L.

## CONECTORES UHF

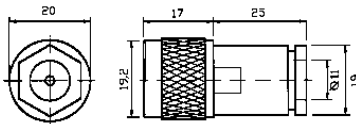


| CODIGO | DESCRIPCIÓN          | COLOR  | UNIDADES |
|--------|----------------------|--------|----------|
| 5510   | H. chasis c/tornillo | NIQUEL | 10       |

Conector UHF hembra chasis con tornillo, terminal soldable.  
UHF female chassis.

C. SETRONIC S.L.

## CONECTORES N

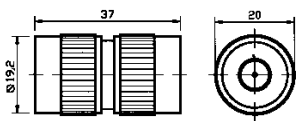


| CODIGO | DESCRIPCIÓN        | COLOR  | UNIDADES |
|--------|--------------------|--------|----------|
| 5550   | M. c/tuerca RG-213 | NIQUEL | 10       |
| 5551   | M. c/tuerca RG-58  | NIQUEL | 10       |

Conector N macho con tuerca.  
N male connectors.

C. SETRONIC S.L.

## CONECTORES N

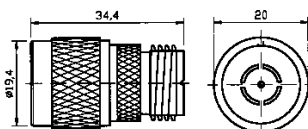


| CODIGO | DESCRIPCIÓN   | COLOR  | UNIDADES |
|--------|---------------|--------|----------|
| 5560   | N doble macho | NIQUEL | 10       |

Conector N doble macho.  
N double male connectors.

C. SETRONIC S.L.

## ADAPTADORES N



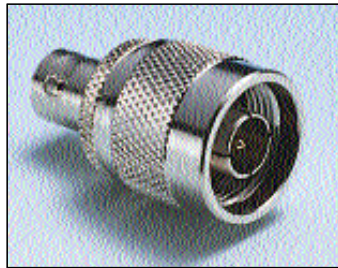
| CODIGO | DESCRIPCIÓN | COLOR  | UNIDADES |
|--------|-------------|--------|----------|
| 5570   | N/M. UHF/H. | NIQUEL | 10       |

Convierte un conector N macho en un conector UHF hembra.  
N male to UHF female.

# CONECTORES SERIE METALICA

C. SETRONIC S.L.

## ADAPTADORES N



| CODIGO | DESCRIPCIÓN | COLOR  | UNIDADES |
|--------|-------------|--------|----------|
| 5580   | N/M. BNC/H. | NIQUEL | 10       |

Convierte un conector N macho en un conector BNC hembra.  
N male to BNC female.

C. SETRONIC S.L.

## ADAPTADORES N

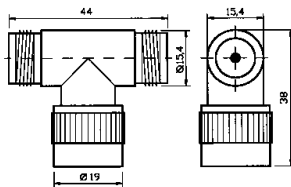


| CODIGO | DESCRIPCIÓN      | COLOR  | UNIDADES |
|--------|------------------|--------|----------|
| 5590   | N macho F hembra | NIQUEL | 10       |

Convierte un conector N macho en un conector F hembra.  
N male to F female.

C. SETRONIC S.L.

## ADAPTADORES N

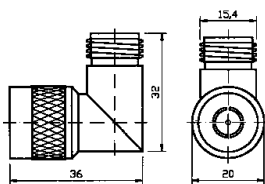


| CODIGO | DESCRIPCIÓN | COLOR  | UNIDADES |
|--------|-------------|--------|----------|
| 5600   | N/M. 2 N/H. | NIQUEL | 10       |

Convierte un conector N macho en dos conectores N hembra.  
N male to double female.

C. SETRONIC S.L.

## ADAPTADORES N

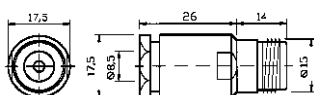


| CODIGO | DESCRIPCIÓN   | COLOR  | UNIDADES |
|--------|---------------|--------|----------|
| 5610   | N/M. N/H. 90° | NIQUEL | 10       |

Convierte un conector N macho en un conector N hembra, acodado 90°  
Right angle N male to female.

C. SETRONIC S.L.

## CONECTORES N



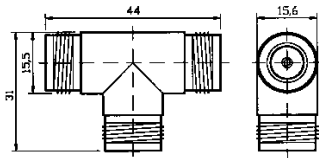
| CODIGO | DESCRIPCIÓN        | COLOR  | UNIDADES |
|--------|--------------------|--------|----------|
| 5620   | H. c/tuerca RG-213 | NIQUEL | 10       |
| 5621   | H. c/tuerca RG-58  | NIQUEL | 10       |

Conector N hembra con tuerca.  
N female connectors.

# CONECTORES SERIE METALICA

C. SETRONIC S.L.

## CONECTORES N

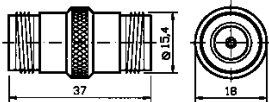


| CODIGO | DESCRIPCIÓN     | COLOR  | UNIDADES |
|--------|-----------------|--------|----------|
| 5630   | N triple hembra | NIQUEL | 10       |

Conector N triple hembra.  
N connector three female.

C. SETRONIC S.L.

## CONECTORES N



| CODIGO | DESCRIPCIÓN    | COLOR  | UNIDADES |
|--------|----------------|--------|----------|
| 5640   | N doble hembra | NIQUEL | 10       |

Conector N doble hembra.  
N connector double female.

C. SETRONIC S.L.

## CONECTORES N



| CODIGO | DESCRIPCIÓN         | COLOR  | UNIDADES |
|--------|---------------------|--------|----------|
| 5650   | N doble hembra codo | NIQUEL | 10       |

Conector N doble hembra, acodado 90°.  
Right angle N double female.

C. SETRONIC S.L.

## CONECTORES N

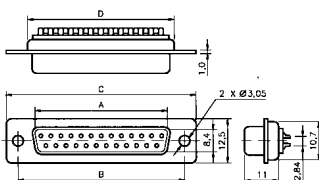


| CODIGO | DESCRIPCIÓN     | COLOR  | UNIDADES |
|--------|-----------------|--------|----------|
| 5660   | N hembra chasis | NIQUEL | 10       |

Conector N hembra chasis.  
N female chassis.

C. SETRONIC S.L.

## CONECTORES \* SUB D \*



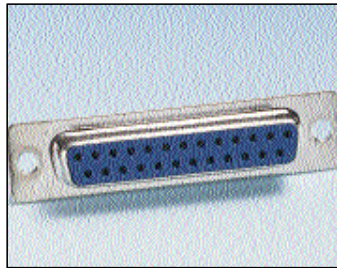
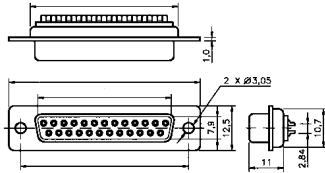
| CODIGO | DESCRIPCIÓN        | COLOR  | UNIDADES |
|--------|--------------------|--------|----------|
| 5700   | Macho 9 contactos  | NIQUEL | 25       |
| 5701   | Macho 15 contactos | NIQUEL | 25       |
| 5702   | Macho 25 contactos | NIQUEL | 25       |

Conector macho SUB D, terminales soldables.  
D SUB male connectors.

# CONECTORES SERIE METALICA

C. SETRONIC S.L.

## CONECTORES \* SUB D \*



| CODIGO | DESCRIPCIÓN         | COLOR  | UNIDADES |
|--------|---------------------|--------|----------|
| 5710   | Hembra 9 contactos  | NIQUEL | 25       |
| 5711   | Hembra 15 contactos | NIQUEL | 25       |
| 5712   | Hembra 25 contactos | NIQUEL | 25       |

Conector hembra SUB D, terminales soldables.  
D SUB female connectors.

C. SETRONIC S.L.

## CONECTORES \* SUB D \*

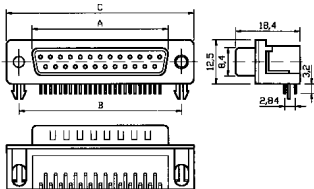


| CODIGO | DESCRIPCIÓN      | COLOR  | UNIDADES |
|--------|------------------|--------|----------|
| 5720   | M. alta densidad | NIQUEL | 25       |
| 5721   | H. alta densidad | NIQUEL | 25       |

Conectores SUB D, alta densidad, 15 contactos.  
D SUB. High density.

C. SETRONIC S.L.

## CONECTORES \* SUB D \*

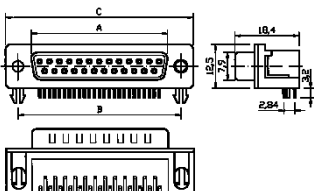


| CODIGO | DESCRIPCIÓN          | COLOR | UNIDADES |
|--------|----------------------|-------|----------|
| 5730   | M. 9 contactos C.I.  | NEGRO | 25       |
| 5731   | M.15 contactos C.I.  | NEGRO | 25       |
| 5732   | M. 25 contactos C.I. | NEGRO | 25       |

Conectores SUB D macho para C.I. acodado 90°,  
terminales soldables.  
D SUB male right angle.

C. SETRONIC S.L.

## CONECTORES \* SUB D \*



| CODIGO | DESCRIPCIÓN          | COLOR | UNIDADES |
|--------|----------------------|-------|----------|
| 5740   | H. 9 contactos C.I.  | NEGRO | 25       |
| 5741   | H. 15 contactos C.I. | NEGRO | 25       |
| 5742   | H. 25 contactos C.I. | NEGRO | 25       |

Conectores SUB D hembra para C.I. acodado 90°,  
terminales soldables.  
D SUB female right angle.

C. SETRONIC S.L.

## CONECTORES \* SUB D \*



| CODIGO | DESCRIPCIÓN         | COLOR | UNIDADES |
|--------|---------------------|-------|----------|
| 5750   | M. c/plano 9 cont.  | AZUL  | 10       |
| 5751   | M. c/plano 15 cont. | AZUL  | 10       |
| 5752   | M. c/plano 25 cont. | AZUL  | 10       |

Conectores SUB D macho, para cable plano, montaje  
por presión superior sobre la tapa.  
D SUB male for flat cable.

# CONECTORES SERIE METALICA

C. SETRONIC S.L.

## CONECTORES \* SUB D \*



Conectores SUB D hembra, para cable plano, montaje por presión superior sobre la tapa.  
D SUB female for flat cable.

| CODIGO | DESCRIPCIÓN         | COLOR | UNIDADES |
|--------|---------------------|-------|----------|
| 5760   | H. c/plano 9 cont.  | AZUL  | 10       |
| 5761   | H. c/plano 15 cont. | AZUL  | 10       |
| 5762   | H. c/plano 25 cont. | AZUL  | 10       |

C. SETRONIC S.L.

## TORRETAS PARA CONECTORES \* SUB D \*



Separadores con tuerca para el montaje en chasis de conectores SUB D.  
Separator with nut for D SUB connectors chassis.

| CODIGO | DESCRIPCIÓN      | COLOR  | UNIDADES |
|--------|------------------|--------|----------|
| 5768   | T. para conector | NIQUEL | 100      |

C. SETRONIC S.L.

## CARCASAS DE PVC PARA CONECTORES \* SUB D \*



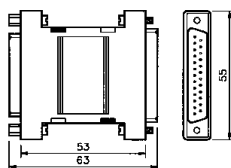
Carcasas de PVC para conectores SUB D, se suministran con tornillos largos.  
Plastic cover for D SUB connectors.

| CODIGO | DESCRIPCIÓN       | COLOR | UNIDADES |
|--------|-------------------|-------|----------|
| 5770   | Carcasa 9 cont.   | NEGRO | 25       |
| 5771   | Carcasa 15 cont.. | NEGRO | 25       |
| 5572   | Carcasa 25 cont.. | NEGRO | 25       |

5770.- Este modelo se puede utilizar para los Mod. 5720 y 5721.

C. SETRONIC S.L.

## ADAPTADORES \* SUB D \*



Convertidores SUB D desmontables, carcasa de PVC, con tornillos.  
Gender changer PVC type.

| CODIGO | DESCRIPCIÓN    | COLOR | UNIDADES |
|--------|----------------|-------|----------|
| 5780   | Adap. 9M-9M.   | GRIS  | 1        |
| 5781   | Adap. 9M-25M.  | GRIS  | 1        |
| 5782   | Adap. 9M-25H.  | GRIS  | 1        |
| 5783   | Adap. 9H-9H.   | GRIS  | 1        |
| 5784   | Adap. 9H-25M.  | GRIS  | 1        |
| 5785   | Adap. 9H-25H.  | GRIS  | 1        |
| 5786   | Adap. 25M-25M. | GRIS  | 1        |
| 5787   | Adap. 25M-25H. | GRIS  | 1        |
| 5788   | Adap. 25H-25H. | GRIS  | 1        |